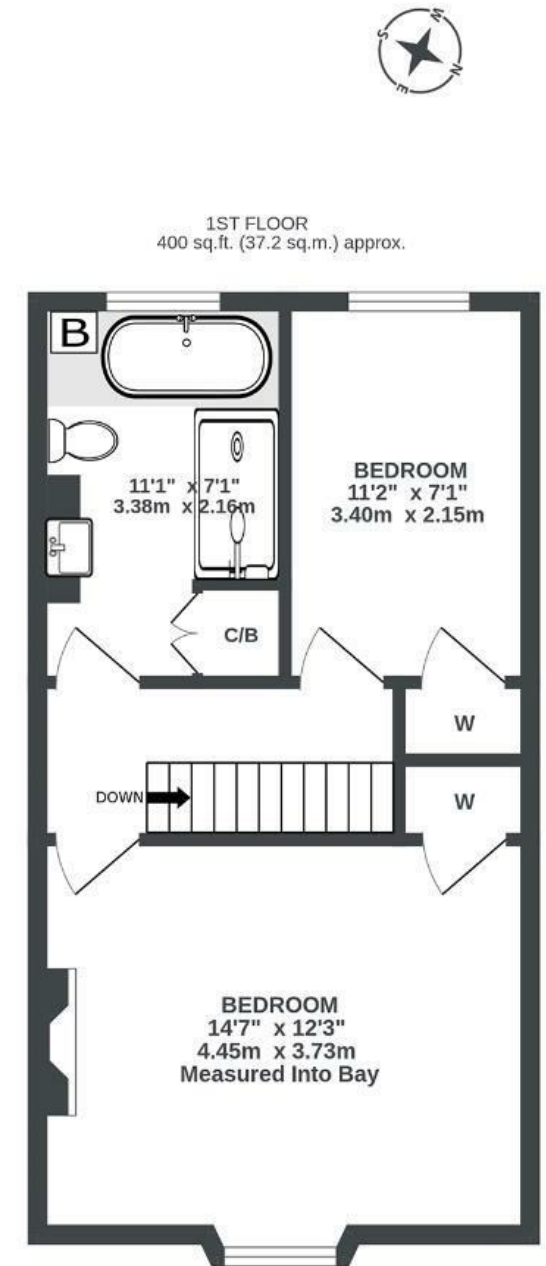
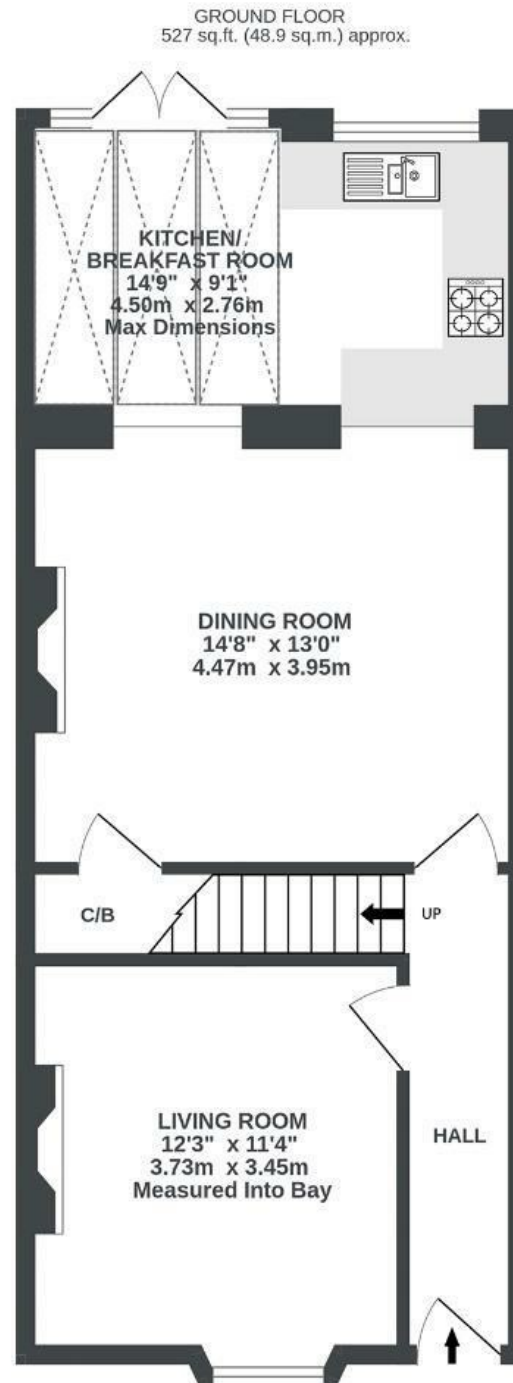


New Buildings

FISHPONDS

APPROXIMATE FLOOR AREA
86.1 SQM / 927 SQFT



Illustrations are for reference purposes only, measurements are approximate, not to scale.

Boardwalk

New Buildings , BRISTOL



£400,000



BS16 2BT



2 Bedrooms



1 Bathrooms

"Our home is warm and full of light - the street feels like a hidden gem with wonderful neighbours and a real village feel. The south-facing garden is our little wildlife oasis, perfect for eating outside and birdwatching."

