

Granby Hill

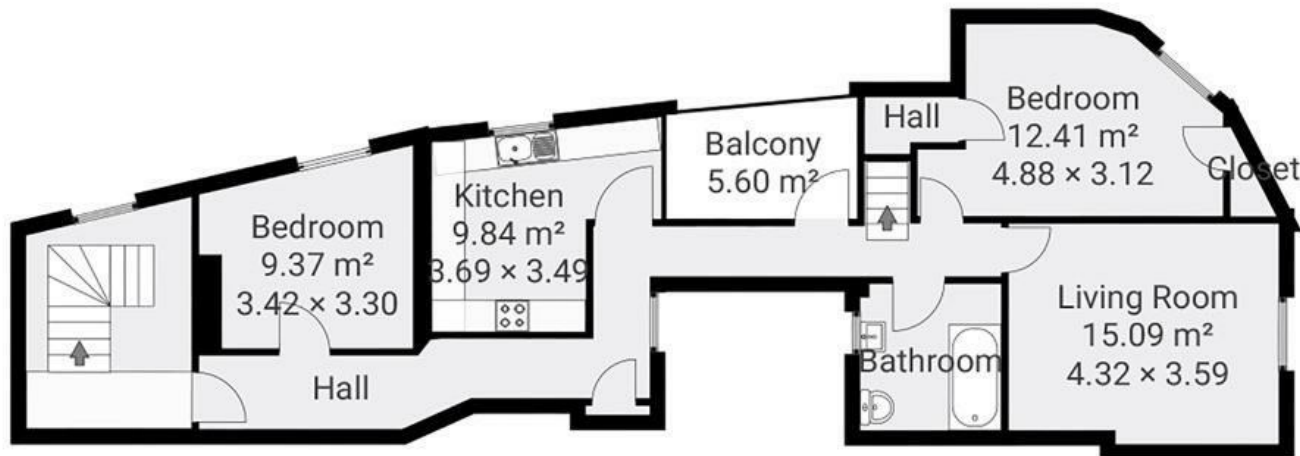
CLIFTON

APPROXIMATE FLOOR AREA
117.06 SQM / 1260 SQFT



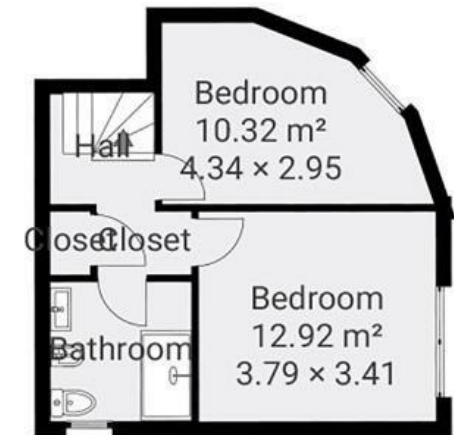
Ground Floor

TOTAL AREA: 83.59 m²



1st Floor

TOTAL AREA: 33.46 m²



Boardwalk

Granby Hill

, BRISTOL

£

£525,000



BS8 4LU

zzz

4 Bedrooms



2 Bathrooms

"Location, within 500 metres of the apartment you have Clifton village, the Clifton Suspension Bridge, the Harbourside and Leigh Woods! Also one of very few properties in Bristol that has an uninterrupted view of the river Avon, and beyond all the way to Dundry. Sitting on the sofa and watching the sunset over the river with occasional cows grazing in Leigh Woods always makes me feel lucky to have such a unique view in a city centre property."

