

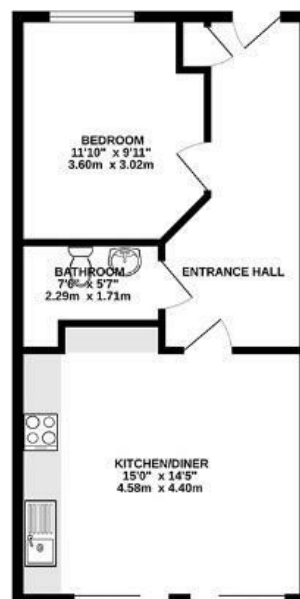
# Ashley Grove Road

St WERBURGH'S

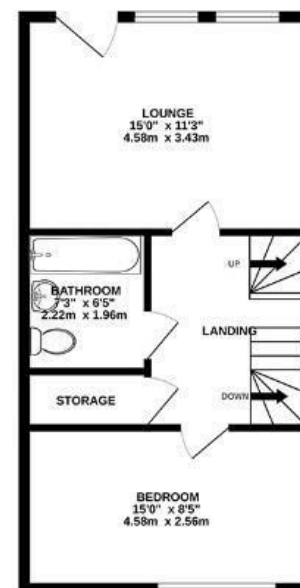
APPROXIMATE FLOOR AREA  
125.5 SQM / 1350 SQFT



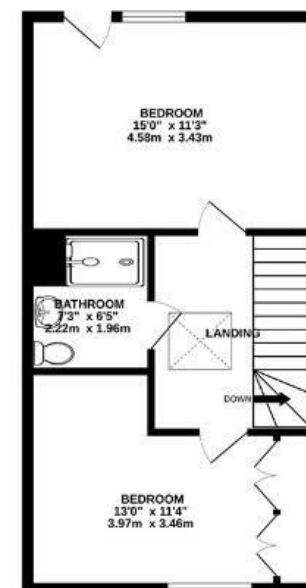
GROUND FLOOR



FIRST FLOOR



SECOND FLOOR



**Boardwalk**

# Ashley Grove

## ST WERBURGHS, BRISTOL

---

£

£600,000



BS2 9AR

zzz

4 Bedrooms



2 Bathrooms

---

*"What I love most about my house is the light. The kitchen's bifold doors open to a sunny patio, while Juliet balconies in the lounge and master bedroom offer a lovely view of the old Dye Works chimney. The high skylight in the hallway keeps the whole place feeling bright and is the real cherry on top! The location gives you the best of both worlds. It's convenient for the city and motorway, but with the City Farm and allotments nearby, you feel miles away from the city bustle."*

