

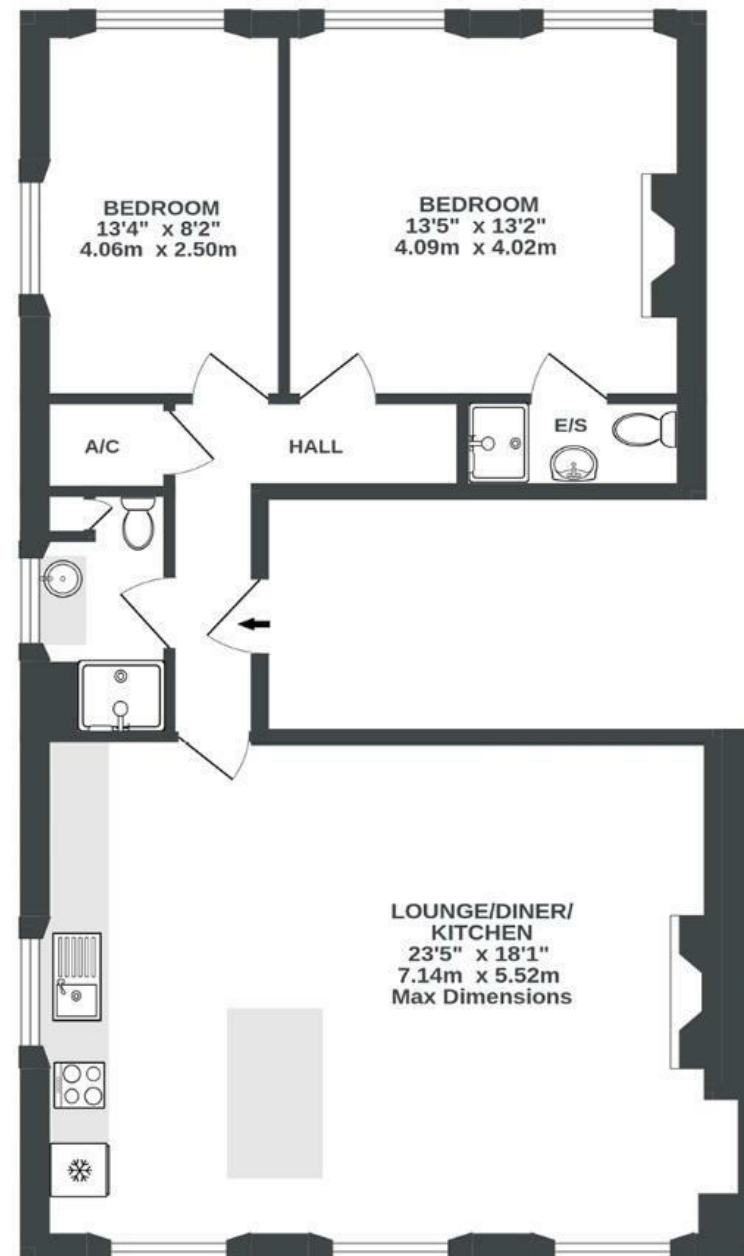
# Portland Square

## ST PAULS

APPROXIMATE FLOOR AREA  
81.3 SQM / 875 SQFT



SECOND FLOOR  
875 sq.ft. (81.3 sq.m.) approx.



Illustrations are for reference purposes only, measurements are approximate, not to scale.

Boardwalk

# Portland Square

, BRISTOL

£

£415,000



BS2 8RR

zzz

2 Bedrooms



2 Bathrooms

"To say we will miss this flat would be an understatement! Overlooking one of the most beautiful squares in Bristol, this cozy home has given us so much over the past 5 years. The high ceilings and big Georgian windows have provided a great backdrop to celebrate many memorable occasions with friends and family. The flat offers a functional open planned layout with a renewed kitchen island, perfect for hosting and where everyone hovers when visiting. Our locals consist of some of the best Bristol establishments; Farro for delicious award winning pastries, Artists Residence for your regular catch ups with friends, and New Bristol Brewery. Portland square is a calm yet interesting place that leaves you a stones throw away from anywhere in Bristol, whether it's to go shopping in the centre, run around the harbour, or explore Gloucester Road. We hope this flat offers you the same love and backdrop for amazing memories that it has offered us."

