

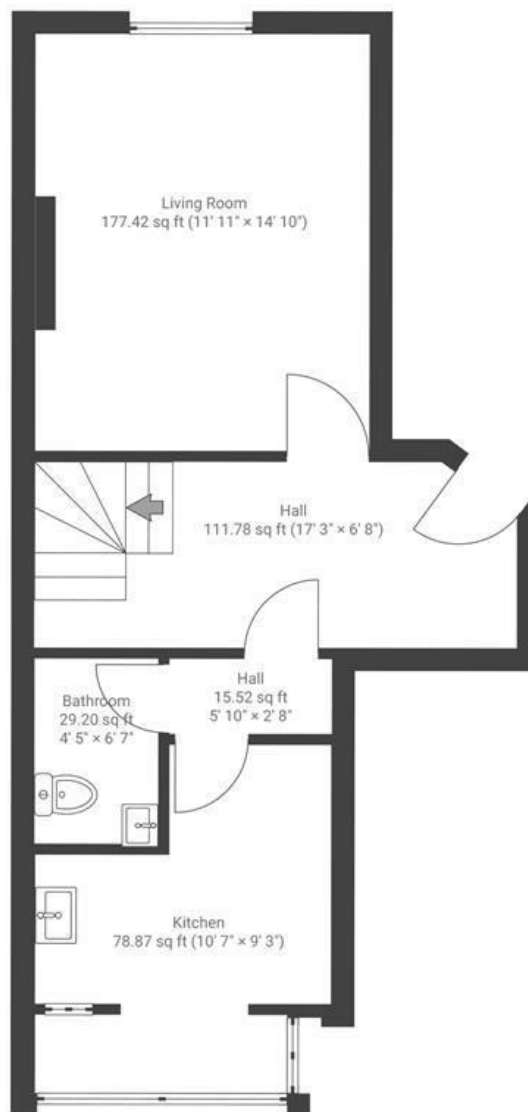
# Bushy Park

## TOTTERDOWN

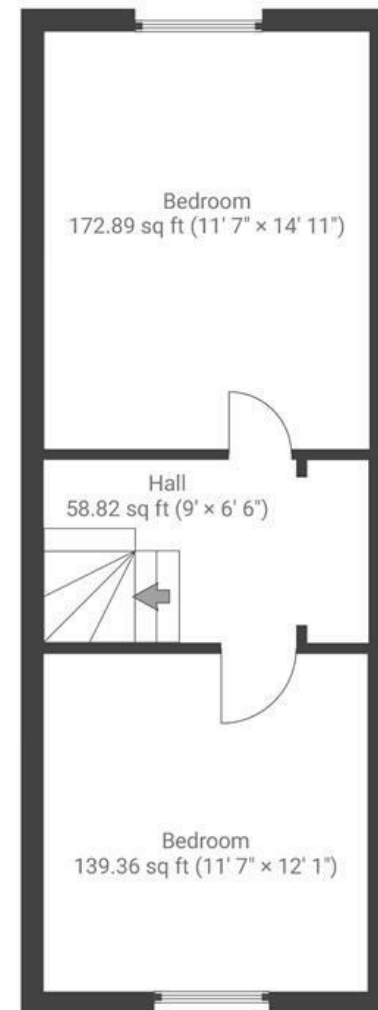
APPROXIMATE FLOOR AREA  
81.1 SQM / 874 SQFT



FIRST FLOOR



SECOND FLOOR



~~Boardwalk~~

# Bushy Park

, BRISTOL

---



£310,000



2 Bedrooms



BS4 2EG



1 Bathrooms

---

*"You wouldn't think this is a flat! It's so spacious it feels more like a house especially with the garden, the location is great nestled between Bedminster and Knowle you get the best of both worlds. This is the perfect place for someone who wants a quick and convenient move as there is no chain."*

