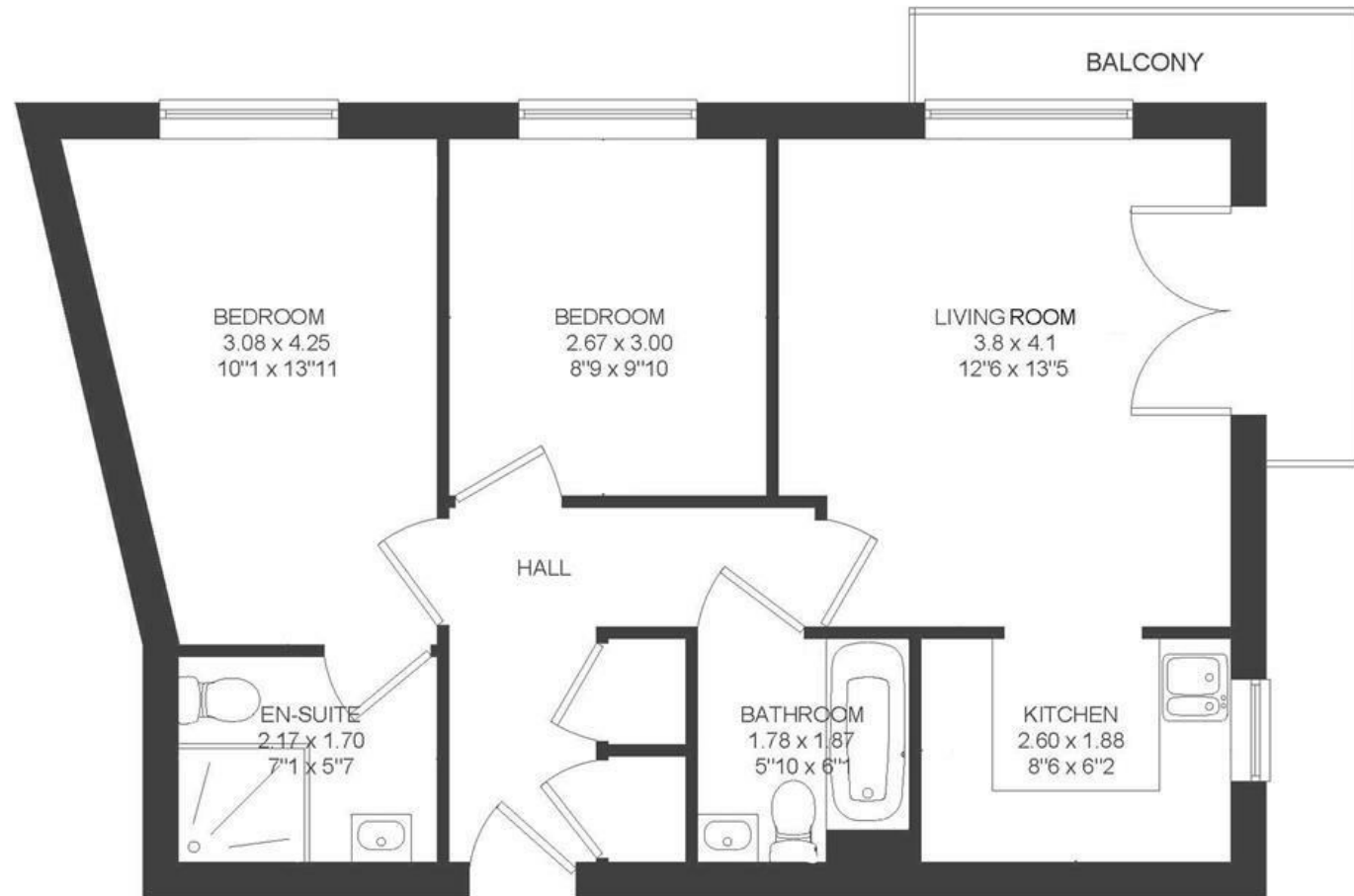


Dirac Road

ASHLEY DOWN

APPROXIMATE FLOOR AREA
55.8 SQM / 601 SQFT



Boardwalk

Dirac Road

ASHLEY DOWN, BRISTOL

£

£300,000



BS7 9LP

zzz

2 Bedrooms



2 Bathrooms

We've loved our bright, airy apartment over the past ten years. With high ceilings, park views, and a peaceful feel, it's a calm retreat in the heart of the city. There's nothing quite like a slow weekend morning with the balcony doors open, music playing, and the sunshine streaming in as you look out over the park. The open-plan layout is great for entertaining, and we've made many memories here with friends and family — from laid-back Sunday roasts to pre-drinks before heading out.

