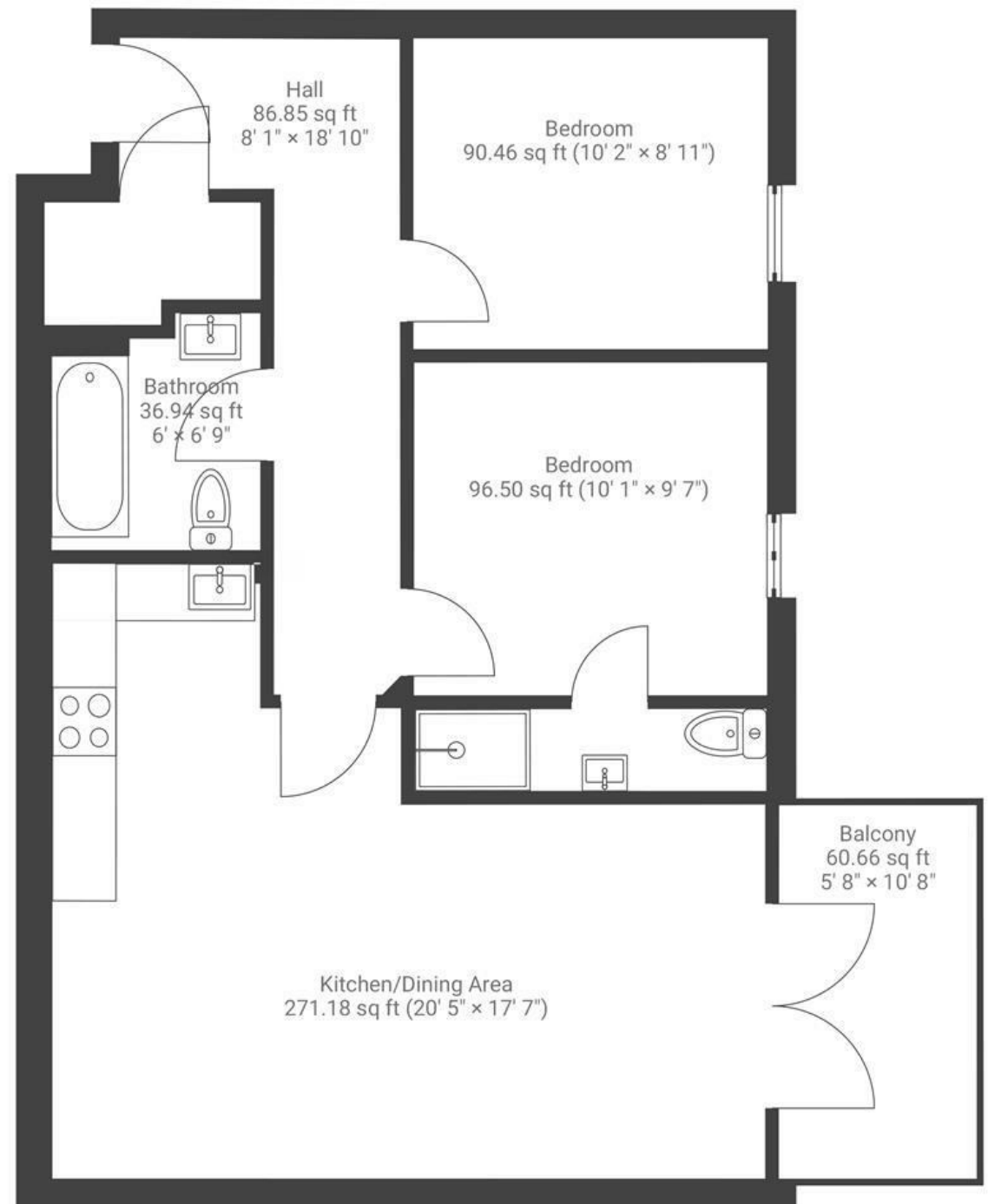


# Ratcliffe Court

## OLD MARKET

APPROXIMATE FLOOR AREA  
58 SQM / 625 SQFT



Boardwalk

# Sweetman Place

, BRISTOL

£

£275,000

zzz

2 Bedrooms



BS2 0FB



2 Bathrooms

*"The flat is light and airy and set in an amazing location. My favourite memories of the flat are popping out at the weekend to get a pastry from Hart's and coming back and eating it on the balcony in the sun."*

