

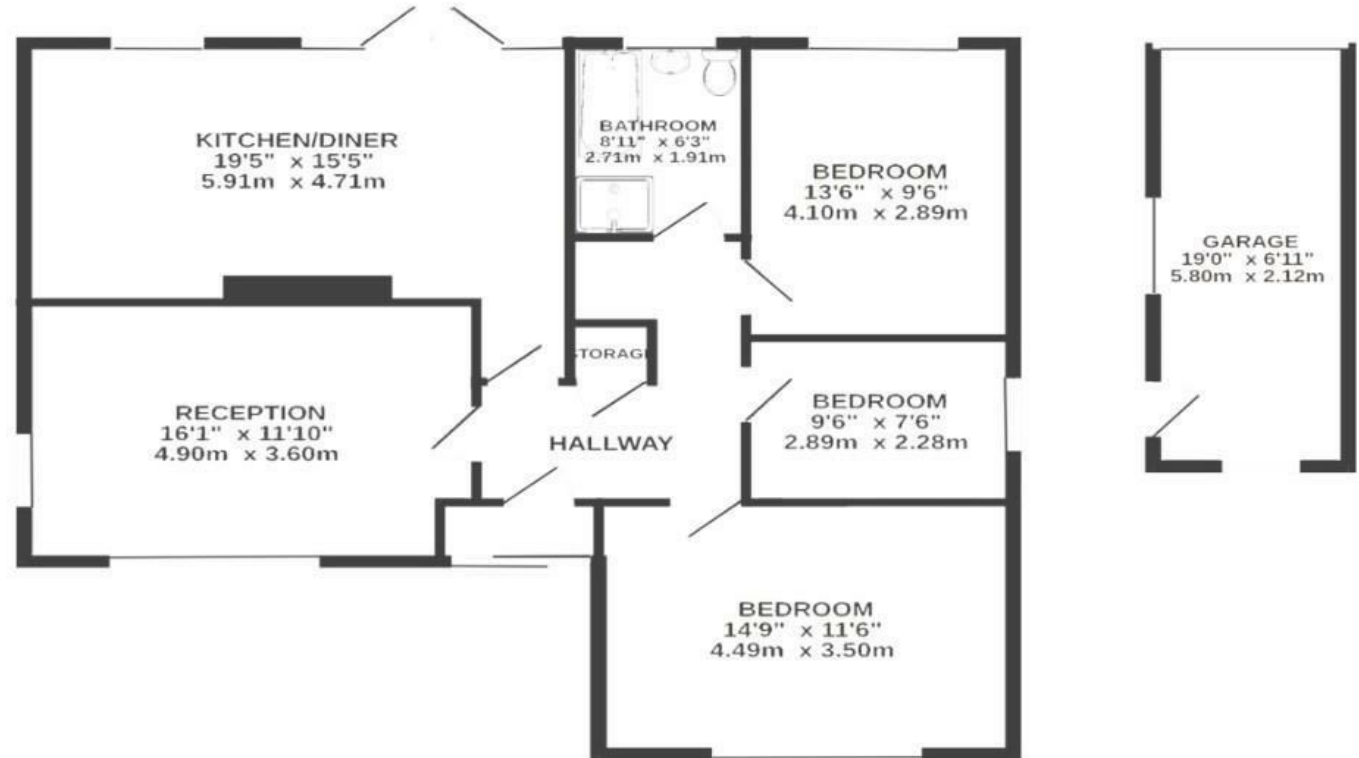
# Allison Road

## BRISLINGTON

APPROXIMATE FLOOR AREA  
93.0 SQM / 1001 SQFT



### GROUND FLOOR



Illustrations are for reference purposes only, measurements are approximate, not to scale.

**Boardwalk**

# Allison Road , BRISTOL

---



£440,000



BS4 4PG



3 Bedrooms



2 Bathrooms

---

*"We love this house and what we have created. A spacious, calm and happy home with ample light and a free flow feel. We have put a lot of thought into the entire finish and feel of the house and we would love to just pick it up and take it with us. The area is an excellent little neighbourhood and our children have been so blessed to be able to go on almost daily walks to Nightingale Valley Woods which are minutes away and offer an absolute oasis of calm and nature."*

