

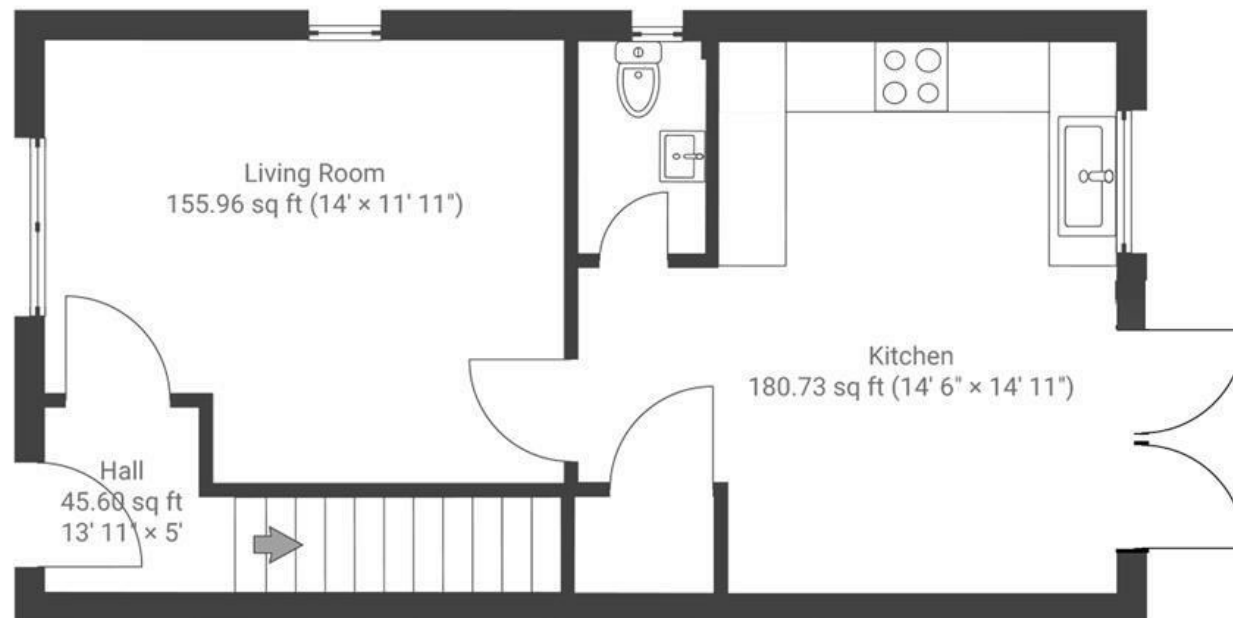
Orchard Avenue

HARTCLIFFE

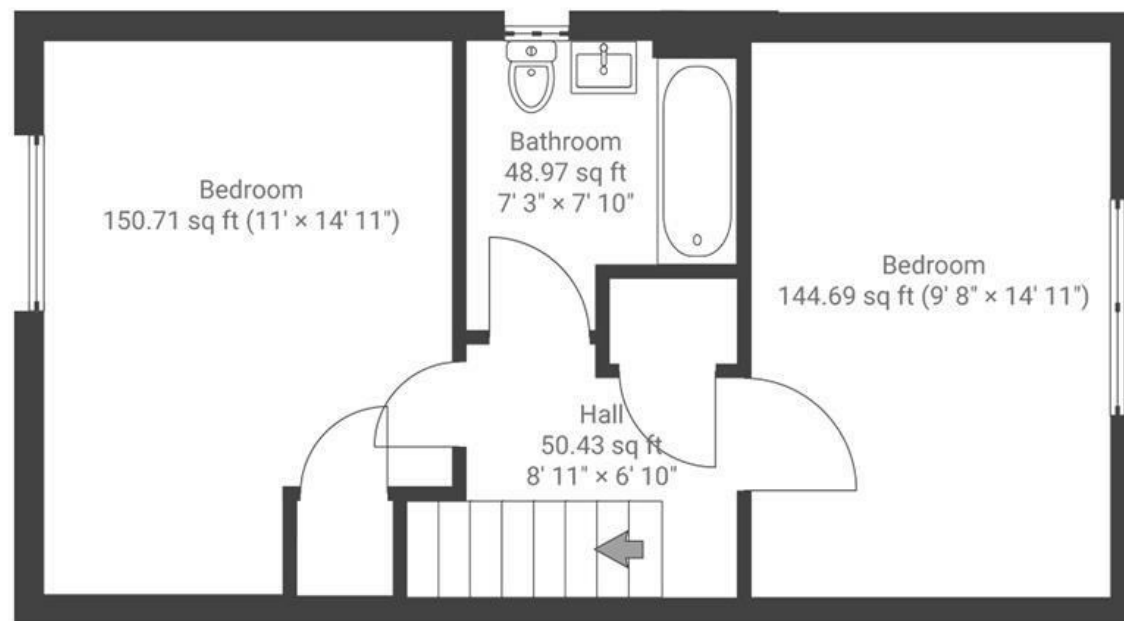
APPROXIMATE FLOOR AREA
76.1 SQM / 820 SQFT



GROUND FLOOR



FIRST FLOOR



Boardwalk

Orchard Avenue

, BRISTOL

£

£300,000



BS13 0FJ

zzz

2 Bedrooms



2 Bathrooms

"We've loved living at Orchard Avenue for the past 3½ years. The house is filled with natural light and has a wonderfully open feel, with a secure and private garden that's perfect for relaxing or entertaining. Imperial Park is just a stone's throw away, and we often spend our weekends exploring Ashton Court, Leigh Woods, and Chew Magna — all less than 15 minutes away. Being so close to the airport has been incredibly convenient, and there are great bus routes that make getting into the city quick and easy."

