

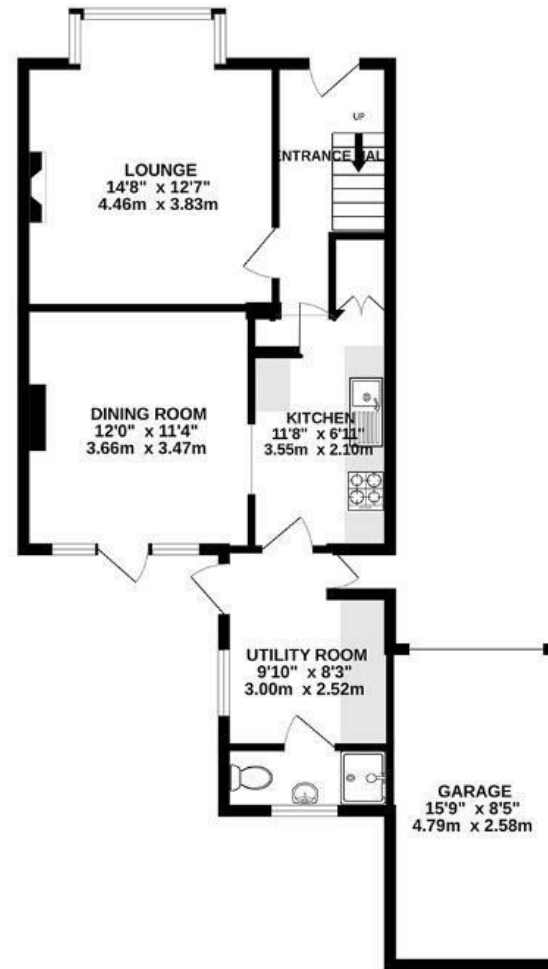
Stonebridge Park

EASTVILLE

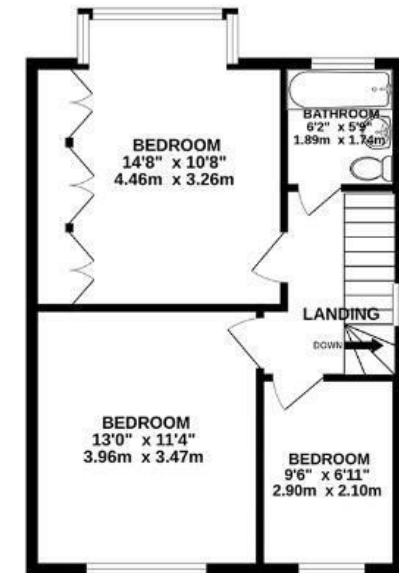
APPROXIMATE FLOOR AREA
108.9 SQM / 1172 SQFT



GROUND FLOOR



FIRST FLOOR



Boardwalk

Stonebridge , BRISTOL



£475,000



3 Bedrooms



BS5 6RW



2 Bathrooms

"I love the brightness of the house and the sun all day in the garden. It's a happy environment. I love sitting in the dining room looking out onto the garden, it just cheers me up every day."

