

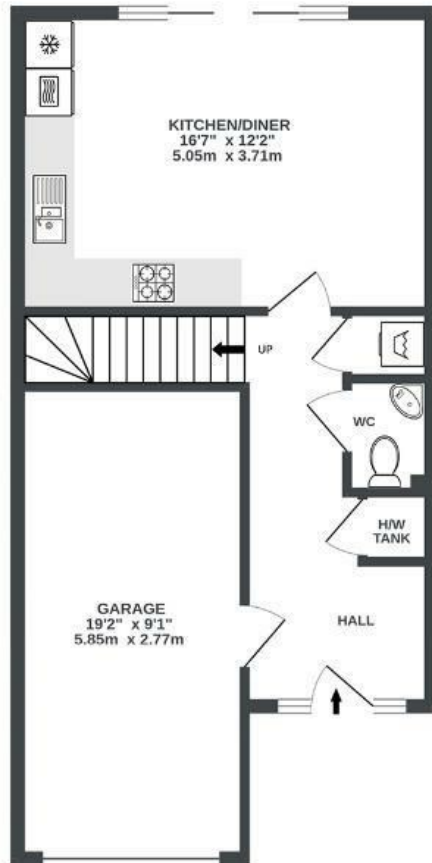
Great Clover Leaze

CHESWICK VILLAGE

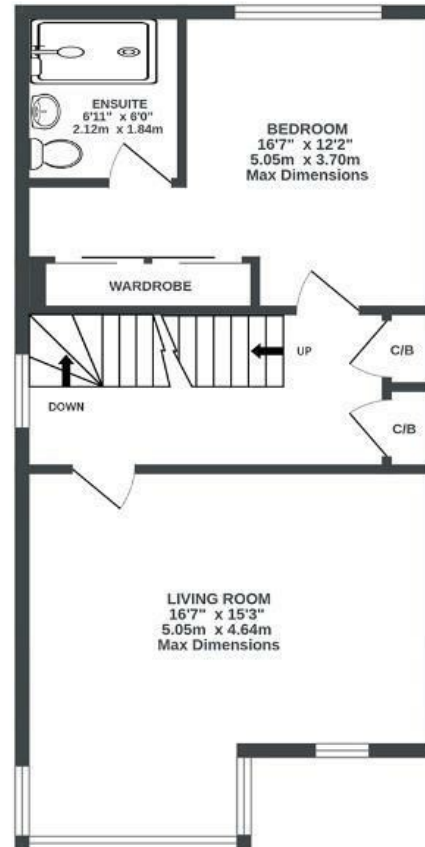
APPROXIMATE FLOOR AREA
143.5 SQM / 1545 SQFT



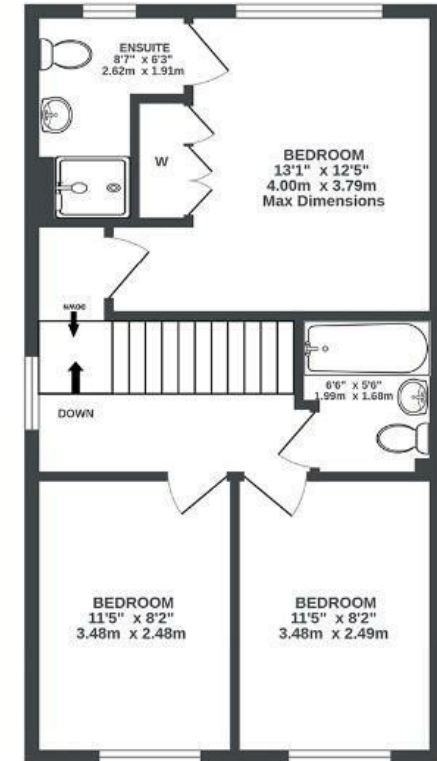
GROUND FLOOR
524 sq.ft. (48.6 sq.m.) approx.



1ST FLOOR
530 sq.ft. (49.3 sq.m.) approx.



2ND FLOOR
491 sq.ft. (45.6 sq.m.) approx.



Illustrations are for reference purposes only, measurements are approximate, not to scale.

Boardwalk

Great Clover

, BRISTOL



£495,000



BS16 1GG



4 Bedrooms



3 Bathrooms

"It's a lovely quiet neighbourhood with a community feel – I get along with my neighbours and we often go cycling together. The local shops down the road are brilliant, especially BTP where I often go for a coffee or lunch. Everything I need is within a short distance. It's a great place and I will miss living here."

