

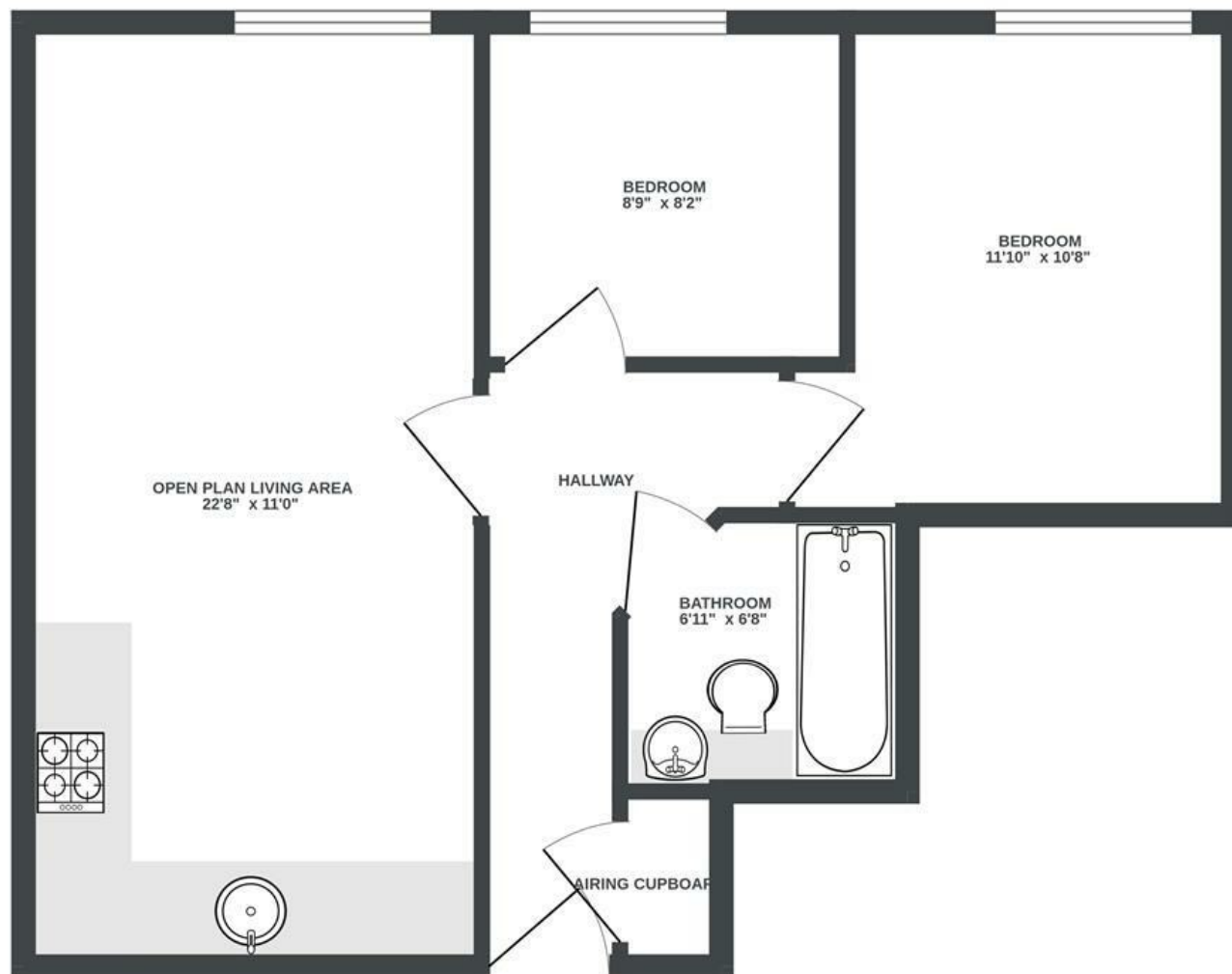
# Centro

## CITY CENTRE

APPROXIMATE FLOOR AREA  
51.4 SQM / 553 SQFT



SECOND FLOOR



**Boardwalk**

# Charles Street

STOKES CROFT, BRISTOL



£280,000



2 Bedrooms



BS1 3NN



1 Bathrooms

*"It's the perfect location for enjoying Bristol city life. Stokes Croft has plenty of great bars and restaurants; shopping in Broadmead and Cabot Circus is just a five-minute walk away; the bus station is 30 seconds from the door; and the Harbourside is only ten minutes on foot. The flat itself is quiet and cosy, in a modern building with private, gated parking and a more generous floorplan than many similar flats in the area. It's been an oasis of calm right in the heart of the city for us."*

