

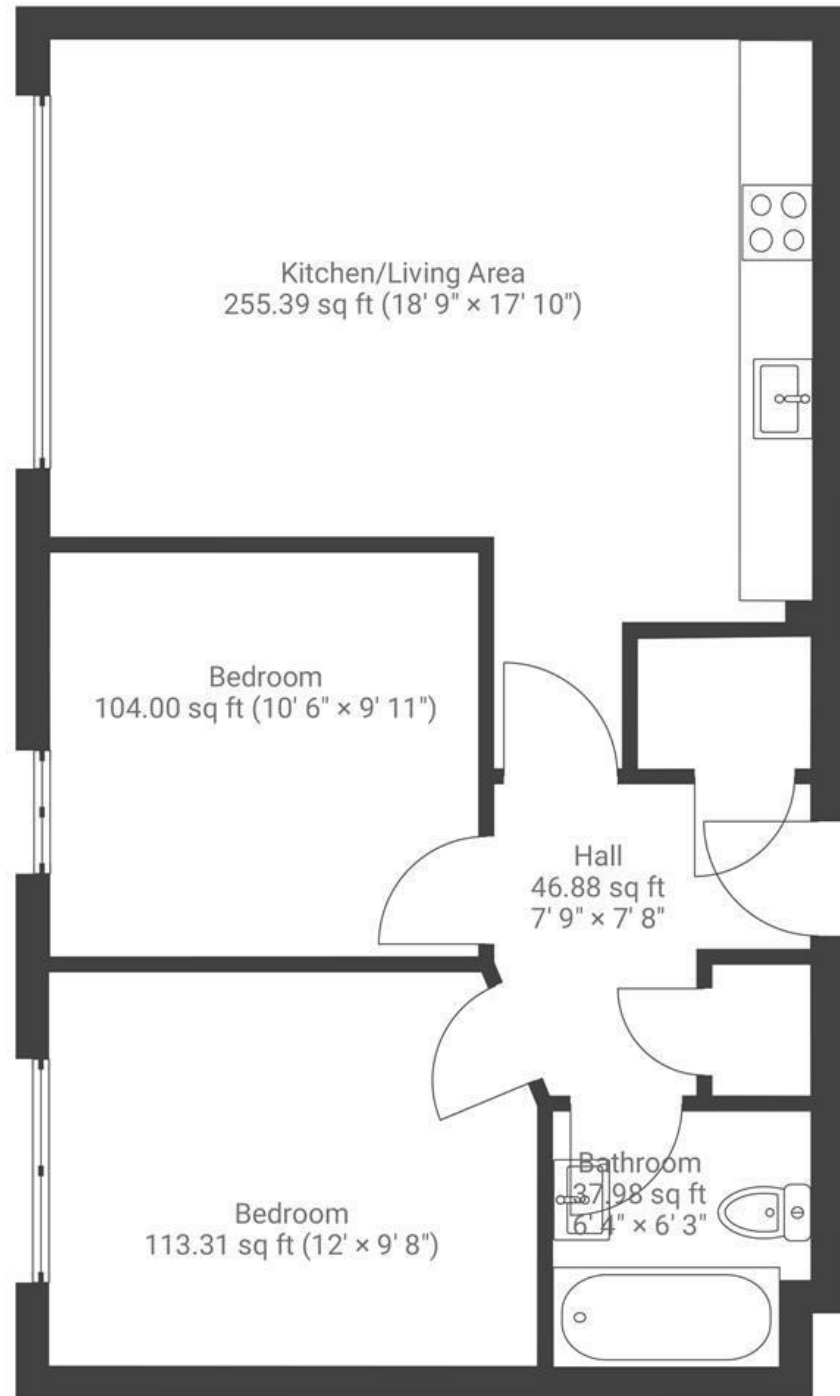
# Ratcliffe Court

## OLD MARKET

APPROXIMATE FLOOR AREA  
53.88 SQM / 580 SQFT



SECOND FLOOR



**Boardwalk**

# Ratcliffe Court

SWEETMAN PLACE, BRISTOL



£285,000



BS2 0FB



2 Bedrooms



1 Bathrooms

*"We've loved living here – it's a bright, welcoming space that feels both cosy and airy. The location is fantastic, with easy access to the harbourside, train station, town centre, motorway, and a great mix of local shops and restaurants. Whilst being so central, it's wonderfully peaceful, with plenty of greenery all around."*

