

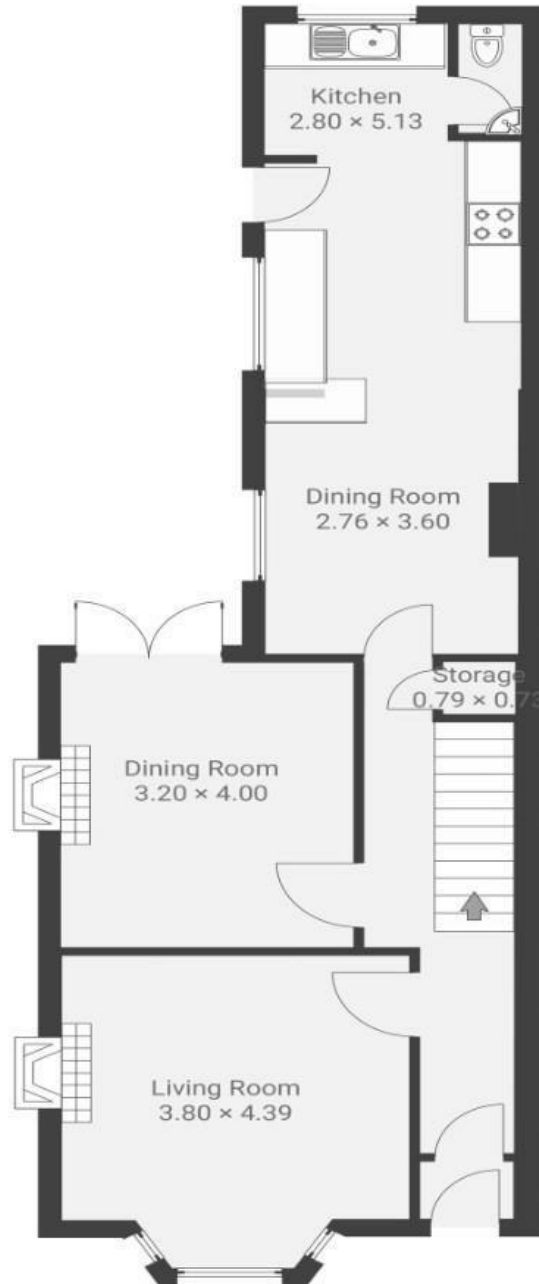
Montrose Park

BRISLINGTON

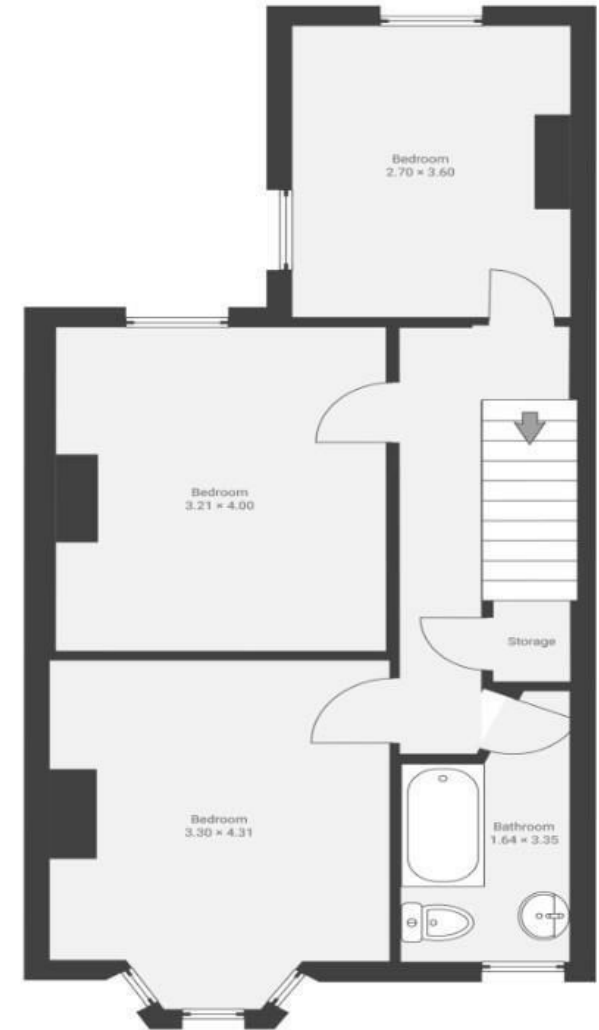
APPROXIMATE FLOOR AREA
116.0 SQM / 1248 SQFT



GROUND FLOOR



FIRST FLOOR



Illustrations are for reference purposes only, measurements are approximate, not to scale.

Boardwalk

Montrose Park

, BRISTOL

£

£475,000



BS4 4JF

zzz

3 Bedrooms



2 Bathrooms

"This house holds special memories for us as the first house we brought our twins home to. Its been a wonderful 4 years here surrounded by warm friendly neighbours and a real sense of community. We have lovingly transformed the house and will be sad to leave the warm log burner and beautiful cherry blossom tree. We've enjoyed sunny days in the quiet garden and walks to nearby Brislington brook, roasts in the Langton pub and sundowners at Beese's."

