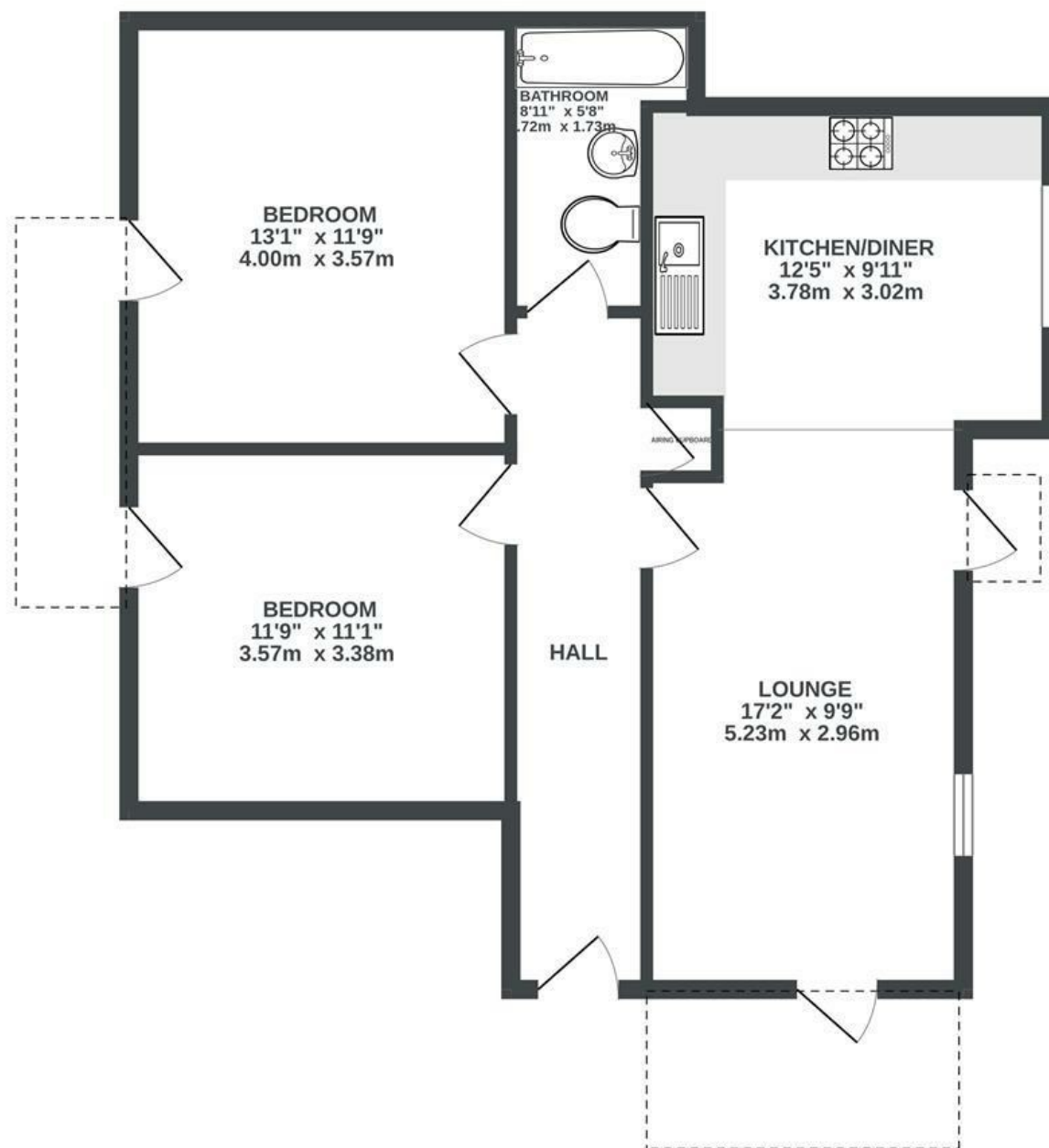


Lawford Mews

OLD MARKET

APPROXIMATE FLOOR AREA
65.1 SQM / 701 SQFT



Boardwalk

Waterloo Road, OLD MARKET, BRISTOL



£295,000



2 Bedrooms



BS2 0PN



1 Bathrooms

"We've absolutely loved living in this flat! It's bright, spacious and has amazing views of the city. The front room and balcony are absolute sun traps and our favourite spots. They've been great for watching sunsets and the Balloon Fiesta in the summer. At the end of the road, you've got the Bristol to Bath cycle path, which has been our go-to for summer bike rides to Saltford to swim in the river."

