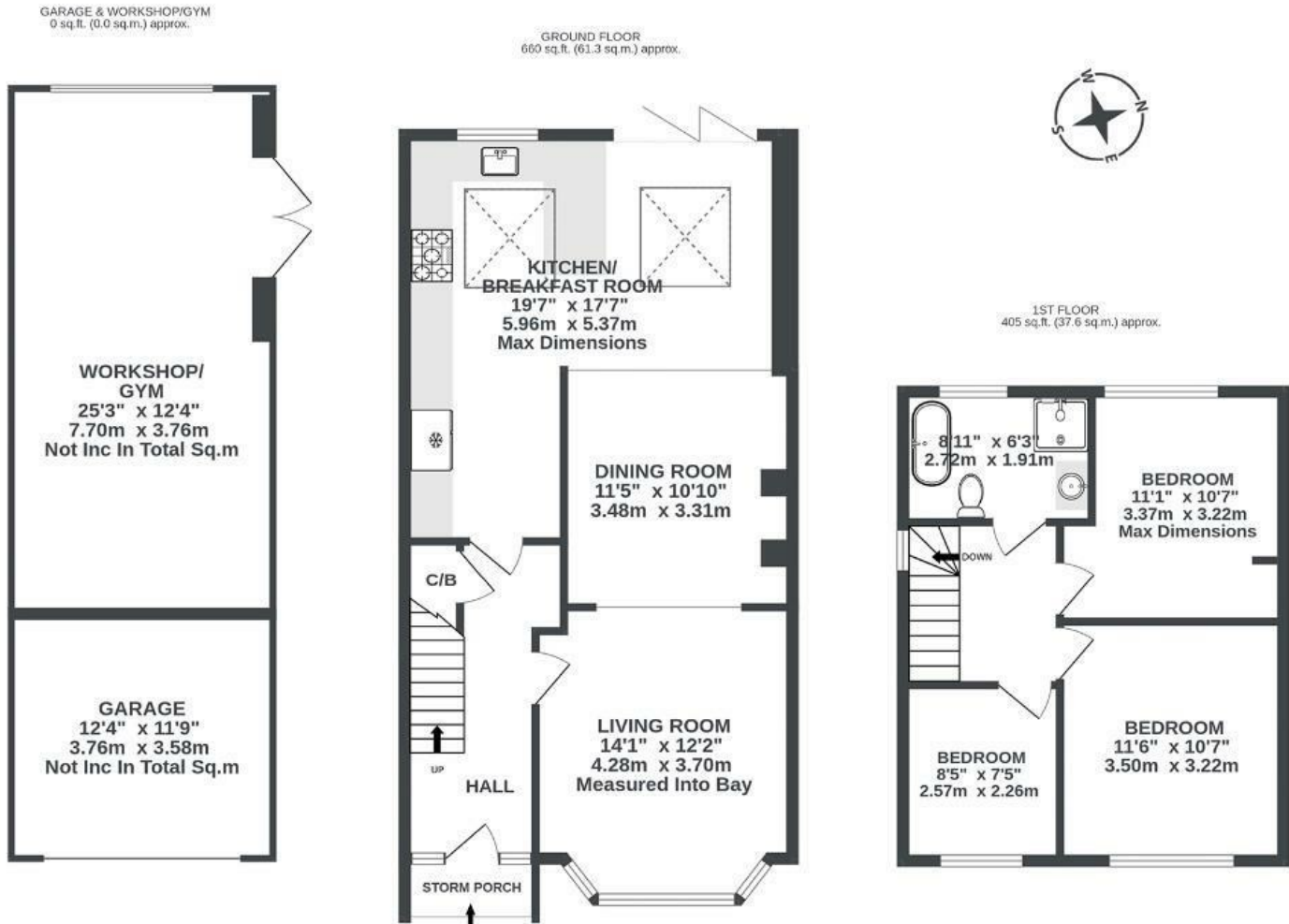


# Lewis Road

## BEDMINSTER DOWN

APPROXIMATE FLOOR AREA  
98.9 SQM / 1064 SQFT



Illustrations are for reference purposes only, measurements are approximate, not to scale.

**Boardwalk**

# Lewis Road

, BRISTOL



£450,000



3 Bedrooms



BS13 7JD



1 Bathrooms

*"Having lived in Bedminster Down for a few years, we have thoroughly enjoyed the beautiful views, community feel of the area and the wonderful neighbours we have met. Having had our son whilst here also, the local facilities of parks, libraries, groups and lots of activities in a walkable distance has been really nice. Being able to easily head over to the restaurants on North Street or easily commute into the city centre for work has been a great perk of the area."*

