



enfields

Enfields Estate
Mansions
15 The Mansions
Enfields Estate
02084 611111
www.enfields.co.uk

Neva Road, Southampton, SO18 4FL

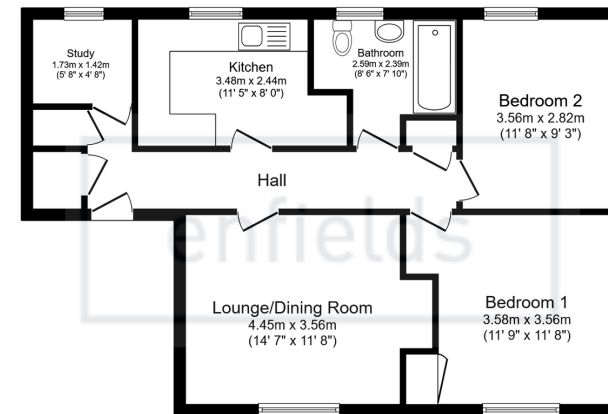
Guide Price £150,000

🛏 2 🚿 1 🛋 1



- No Forward Chain
- Second Floor Flat
- Outside Storage
- Spacious Living/Dining Room
- Two Double Bedrooms
- Communal Gardens
- Utility/Study
- Generous Storage Space





Total floor area: 67.9 sq.m. (731 sq.ft.)

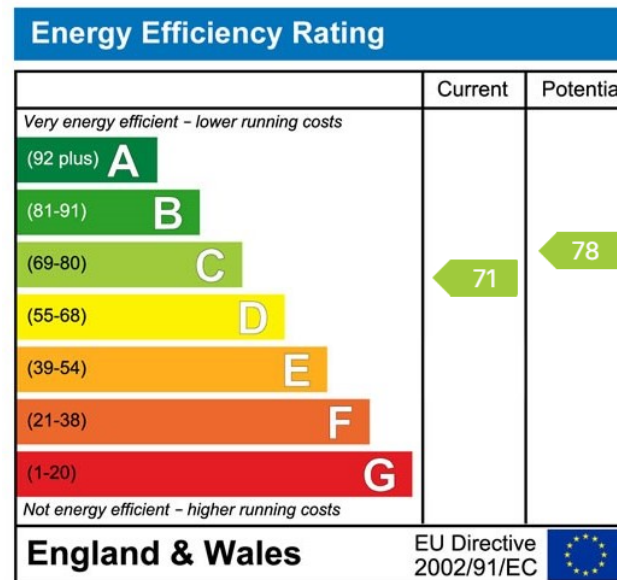
This floor plan is for illustrative purposes only. It is not drawn to scale. Any measurements, floor areas (including any total floor area), openings and orientations are approximate. No details are guaranteed, they cannot be relied upon for any purpose and do not form any part of any agreement. No liability is taken for any error, omission or misstatement. A party must rely upon its own inspection(s). Powered by www.Propertybox.io

enfields

NO FORWARD CHAIN

A spacious and well-presented two double bedroom second-floor apartment, featuring a hallway that leads to two generously sized double bedrooms, perfect for comfortable living. The property boasts a fully-fitted kitchen with the added bonus of a separate utility area or study, offering extra convenience and storage. Additionally, there is a large and bright living/dining area, ideal for relaxing or entertaining.

Further benefits include a bathroom with over-head electric power shower and three generously sized storage cupboards. Externally there are communal gardens along with a private outside storage cupboard.



www.enfields-southampton.co.uk



It is Enfields policy to respect any sole agency currently in force and we would not be able to commence marketing until this has expired or been terminated. If you fail to terminate any previous agreement you could be liable for two sets of fees. Enfields Hythe is a trading name of YTF LTD Registered office: 345 Shirley Road, Southampton, Hampshire, England, SO15 3JD. Company Registration No: 10459987. VAT Registration No: 281 2975 81.

Enfields Lettings - Embley Management LTD T/A Enfields. Registered Address: 345 Shirley Road, Southampton, Hampshire, England, SO15 3JD. Company Registration No: 14847604. VAT Registration No: 439 8546 45.