



enfields

FOR SALE
02380 849210

enfields.online

enfields

enfields online
02380 849210
enfields.online

Butts Ash Lane, Hythe, SO45 3RF

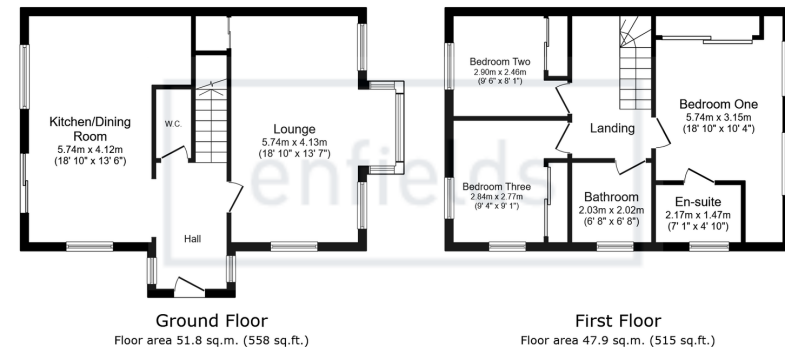
Offers Over £380,000

3 2 2



- Three double bedrooms, two bathrooms (one en-suite)
- Open-plan kitchen/dining room with double doors to garden
- Wrap-around, well-kept garden ideal for entertaining
- Freshly decorated in neutral tones throughout
- Very good EPC rating of B
- End-terraced home in immaculate, move-in-ready condition
- Modern kitchen with breakfast bar and integrated appliances
- Driveway providing off-road parking for multiple cars
- Bright and spacious with ample natural light
- Sought-after Hythe location close to marina, shops, and New Forest





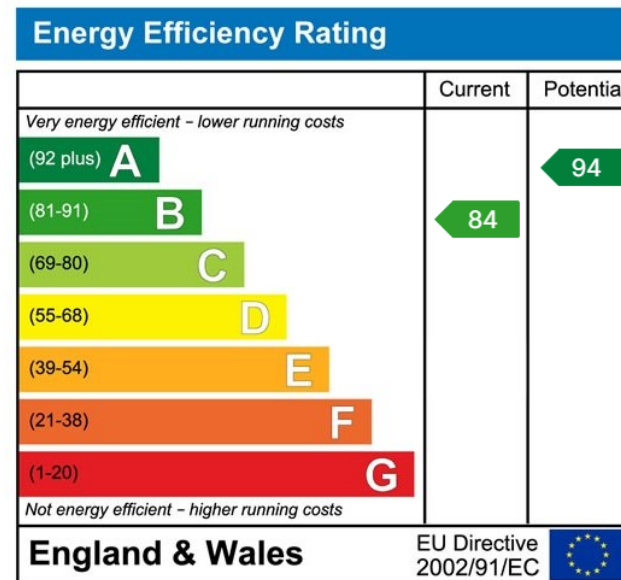
Total floor area: 99.7 sq.m. (1,073 sq.ft.)

This floor plan is for illustrative purposes only. It is not drawn to scale. Any measurements, floor areas (including any total floor area), openings and orientations are approximate. No details are guaranteed, they cannot be relied upon for any purpose and do not form any part of any agreement. No liability is taken for any error, omission or misstatement. A party must rely upon its own inspection(s). Powered by www.Propertybox.io

enfields

NO FORWARD CHAIN

A beautifully presented three-bedroom, two-bathroom end-terraced home located on a sought-after road in Hythe. This immaculate property features modern open-plan living, a wrap-around garden, and off-road parking for multiple vehicles. With no forward chain, it presents an excellent opportunity for immediate occupation.



www.enfields-southampton.co.uk

It is Enfields policy to respect any sole agency currently in force and we would not be able to commence marketing until this has expired or been terminated. If you fail to terminate any previous agreement you could be liable for two sets of fees. Enfields Hythe is a trading name of YTF LTD Registered office: 345 Shirley Road, Southampton, Hampshire, England, SO15 3JD. Company Registration No: 10459987. VAT Registration No: 281 2975 81.

Enfields Lettings - Embley Management LTD T/A Enfields. Registered Address: 345 Shirley Road, Southampton, Hampshire, England, SO15 3JD. Company Registration No: 14847604. VAT Registration No: 439 8546 45.

