



enfields

Enfields Hythe  
3 Marsh Parade  
Hythe, Southampton,  
Hampshire, SO43 6AN  
T 023 8084 9210  
E sales-hythe@enfields.co.uk



Osborne Road South, Southampton, S017

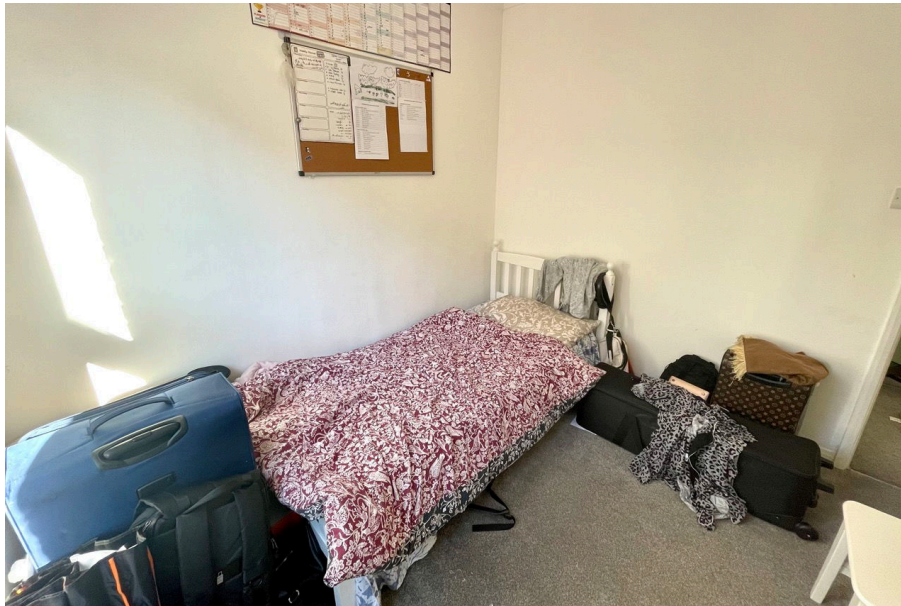
Guide Price £350,000

3 2 2

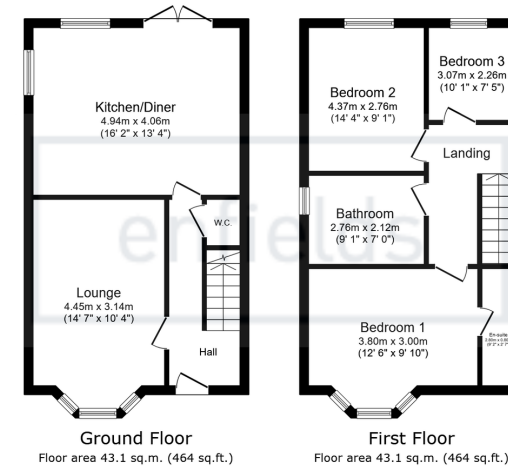




- Three-bedroom semi-detached house
- Spacious lounge with welcoming hallway
- Open-plan kitchen/diner with integrated appliances
- Principal bedroom with en-suite bathroom
- Enclosed rear garden ideal for entertaining
- Quiet cul-de-sac location minimising traffic noise
- Ground-floor WC for added convenience
- Neutral décor throughout, ready to move into
- Modern three-piece family bathroom
- Close to local amenities and transport links





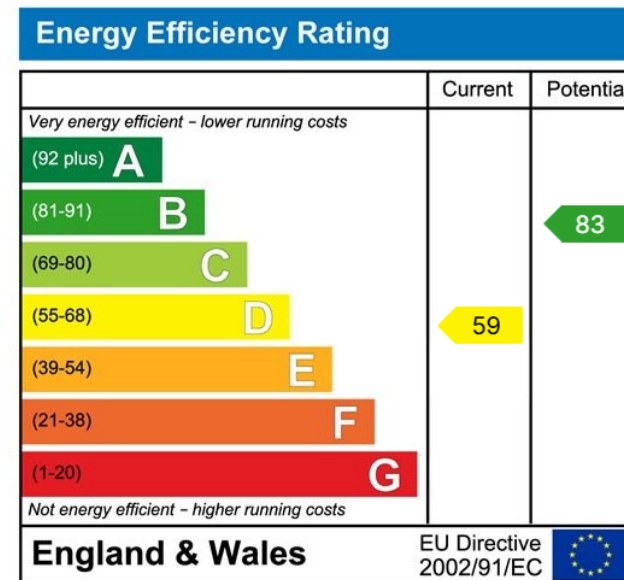


Total floor area: 86.1 sq.m. (927 sq.ft.)

This floor plan is for illustrative purposes only. It is not drawn to scale. Any measurements, floor areas (including any total floor area), openings and orientations are approximate. No details are guaranteed, they cannot be relied upon for any purpose and do not form any part of any agreement. No liability is taken for any error, omission or misstatement. A party must rely upon its own inspection(s). Powered by www.Propertybox.io

enfields

A stylish three-bedroom, two-bathroom semi-detached home situated in a quiet cul-de-sac in Southampton. Offering open-plan living, a modern fitted kitchen, and a private enclosed garden, it's perfect for families or professionals.



[www.enfields-southampton.co.uk](http://www.enfields-southampton.co.uk)

It is Enfields policy to respect any sole agency currently in force and we would not be able to commence marketing until this has expired or been terminated. If you fail to terminate any previous agreement you could be liable for two sets of fees. Enfields Hythe is a trading name of YTF LTD Registered office: 345 Shirley Road, Southampton, Hampshire, England, SO15 3JD. Company Registration No: 10459987. VAT Registration No: 281 2975 81.

Enfields Lettings - Embley Management LTD T/A Enfields. Registered Address: 345 Shirley Road, Southampton, Hampshire, England, SO15 3JD. Company Registration No: 14847604. VAT Registration No: 439 8546 45.

