

H Together Homes



ACACIA AVENUE HORNCHURCH

£425,000

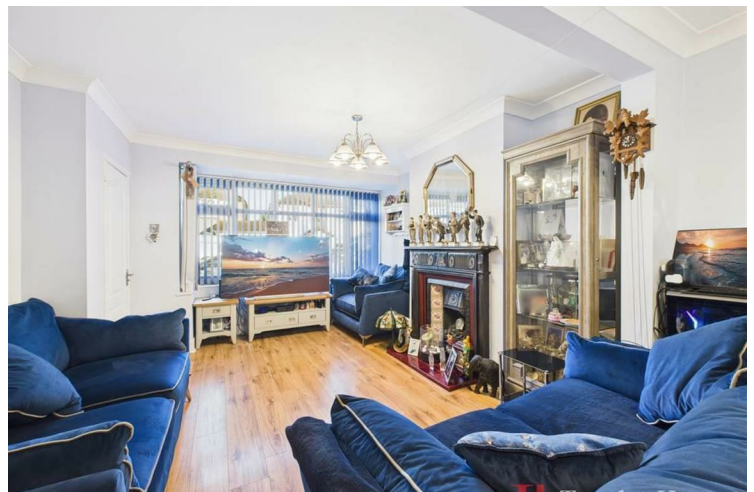
Offers in excess

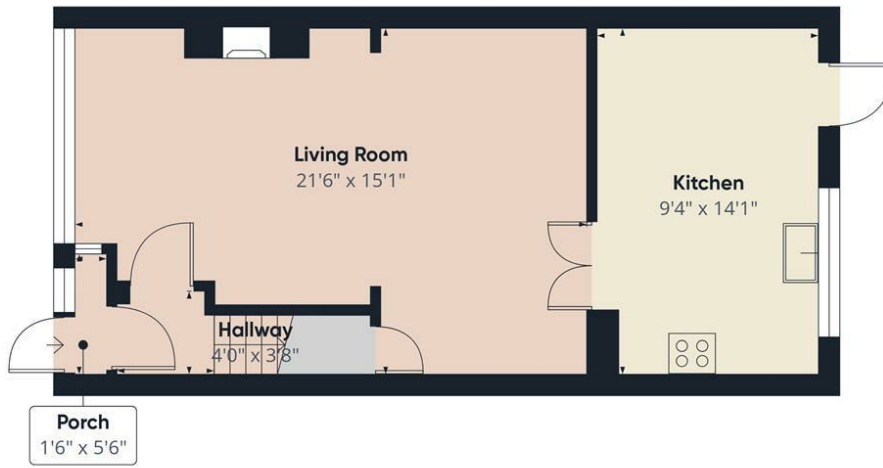
NO CHAIN

Nestled along the ever popular and well regarded Acacia Avenue, this beautifully extended two double bedroom terraced home offers an exceptional opportunity for buyers seeking space, convenience, and long term potential. With a prime position close to excellent schools, a variety of local shops, parks, and superb transport links, this home is perfectly suited to both families and professionals.

From the moment you arrive, the property makes a strong first impression with its private off-street parking, providing ease and practicality for daily living.

Stepping inside, you are welcomed into a bright and inviting lounge, larger than average thanks to a thoughtfully designed rear extension. This sizeable living area offers plenty of space for relaxation and family time, while maintaining a warm and homely atmosphere. The extension flows seamlessly into the modern family kitchen, which has been carefully planned with





Floor 0



Floor 1

Approximate total area⁽¹⁾
734 ft²

(1) Excluding balconies and terraces

Calculations reference the RICS IPMS 3C standard. Measurements are approximate and not to scale. This floor plan is intended for illustration only.

GIRAFFE360



Energy Efficiency Rating		
	Current	Potential
Very energy efficient - lower running costs		
(92 plus) A		
(81-91) B		86
(69-80) C		
(55-68) D	67	
(39-54) E		
(21-38) F		
(1-20) G		
Not energy efficient - higher running costs		
England & Wales		EU Directive 2002/91/EC

Agents Note: Whilst every care has been taken to prepare these particulars, they are for guidance purposes only. All measurements are approximate and are for general guidance purposes only and whilst every care has been taken to ensure their accuracy, they should not be relied upon and potential buyers/tenants are advised to recheck the measurements

Together Homes
21 Station Parade
Hornchurch
RM12 5AB

01708 320 600
sales@togetherhomes.co.uk
togetherhomes.co.uk

Together Homes