

# Together Homes



## ST. ANDREWS AVENUE HORNCHURCH

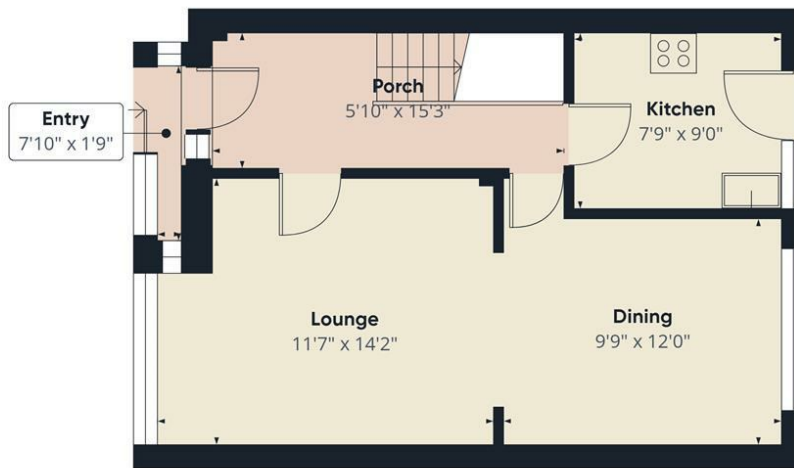
**£450,000**  
Asking price

Located on the sought after St Andrews Avenue, Hornchurch, this charming three bedroom semi-detached home offers fantastic living space with plenty of potential to extend, subject to planning permission.

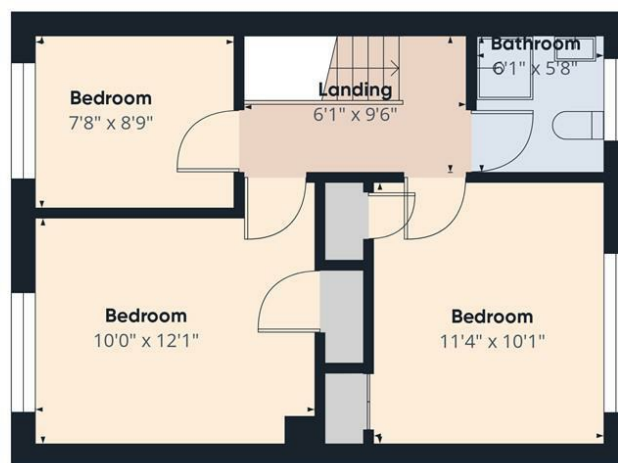
The property benefits from off street parking and is entered via a welcoming porch that leads into a spacious open plan lounge and dining area, ideal for modern family living. The fitted kitchen is positioned at the rear of the home and enjoys views over the generous garden, which provides a perfect setting for outdoor entertaining or future development.

Retaining its original character, the property also includes outbuildings in the garden, housing a separate WC and two useful storage cupboards. The garden itself is a great size and offers excellent scope to extend the property, subject to the necessary permissions.





Floor 0



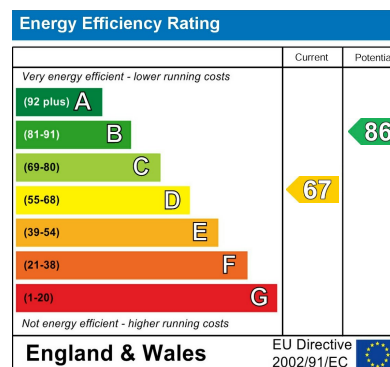
Floor 1

**Approximate total area<sup>(1)</sup>**  
890 ft<sup>2</sup>

(1) Excluding balconies and terraces

Calculations reference the RICS IPMS 3C standard. Measurements are approximate and not to scale. This floor plan is intended for illustration only.

GIRAFFE360



Agents Note: Whilst every care has been taken to prepare these particulars, they are for guidance purposes only. All measurements are approximate and are for general guidance purposes only and whilst every care has been taken to ensure their accuracy, they should not be relied upon and potential buyers/tenants are advised to recheck the measurements

**Together Homes**  
21 Station Parade  
Hornchurch  
RM12 5AB

01708 320 600  
sales@togetherhomes.co.uk  
togetherhomes.co.uk

**Together Homes**