



THE KINGSTON, THE MEADOWS, WYMESWOLD

GUIDE PRICE: £ 650,000





An elegant five-bedroom show home with south-facing garden — including exceptional savings of over £40,000. Occupying a desirable position within The Meadows and offered as the development show home, The Kingston is a beautifully presented five-bedroom detached family home, finished to an enhanced specification and ready for immediate occupation. Designed for modern village living, the home combines generous proportions, light-filled interiors and a highly practical layout — all set within one of Wymeswold's most sought-after residential settings.



The ground floor is arranged around a welcoming entrance hall, leading to a comfortable front-facing living room and a superb open-plan kitchen, dining and family space to the rear. French doors open directly onto the landscaped garden, creating a seamless connection between indoor and outdoor living. The kitchen is fitted with upgraded cabinetry, quartz worktops and integrated appliances, supported by a separate utility room with pantry-style storage, a dedicated study ideal for home working, and a cloakroom.

To the first floor, five well-proportioned bedrooms offer flexibility for family life or guests. The principal bedroom features fitted wardrobes and a contemporary ensuite shower room, while bedroom two also benefits from its own ensuite. A stylish family bathroom completes the accommodation.



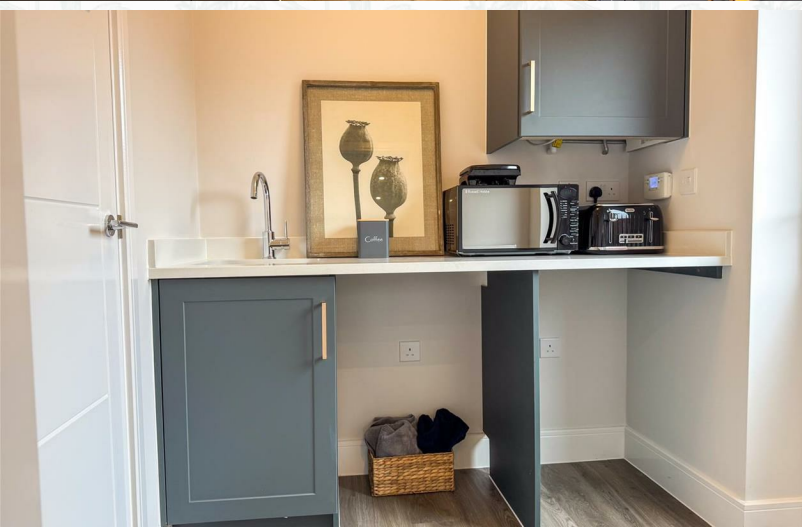


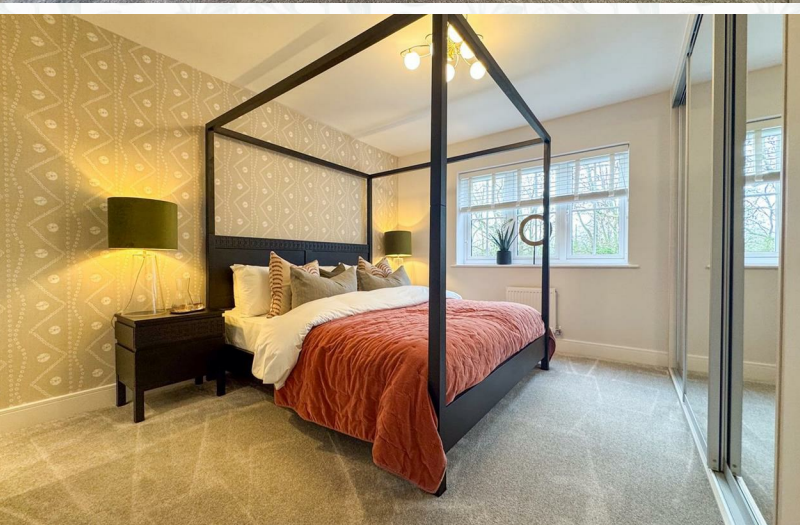


Externally, the property enjoys a south-facing rear garden, professionally landscaped and ideal for entertaining or relaxation. A double garage and driveway parking provide everyday practicality, while the home is offered freehold and includes a 10-year new homes warranty for complete peace of mind.

Show Home Incentive — Save Over £40,000

Reserve Home 16 and benefit from an outstanding, ready-made lifestyle package, including:





All show home fixtures and fittings, including mirrors, artwork, curtains and blinds throughout

Fully landscaped rear garden

Upgrade package, including:

Flooring throughout

Quartz kitchen worktops





Upgraded kitchen cabinetry

Integrated appliances





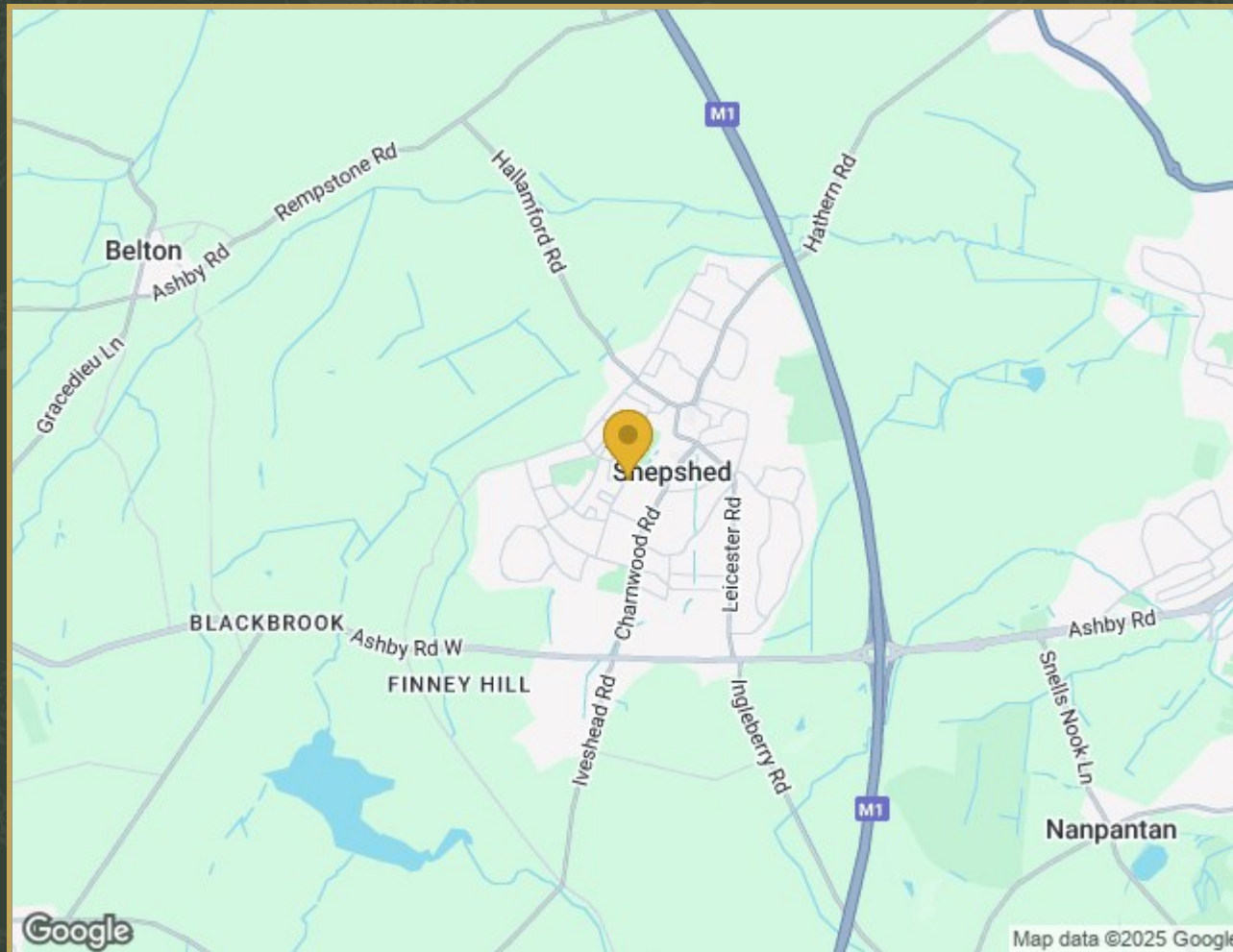
£10,000 Stamp Duty contribution

A rare opportunity to secure a fully dressed, turnkey home with significant financial savings.

Set in the heart of Wymeswold, The Meadows blends contemporary architecture with village charm, offering access to local amenities, well-regarded schooling and excellent connectivity to Loughborough, Leicester, Nottingham and beyond.



Property Location



Plot 16, The Kingston The Meadows, Wymeswold, Loughborough, Leicestershire,
LE12 6ST

