



ONE  
BISHOPSGATE  
PLAZA



ONE  
BISHOPSGATE  
PLAZA





“Design has to be about the  
invention of things”

George Yabu



# CONTENTS

—

- 8-21 One Bishopsgate Plaza
- 22- 47 The Sky Residences
- 48-69 A Lifestyle of Convenience
- 70-91 The City at Your Feet
- 92-99 A World-Class Team

—





# ONE BISHOPSGATE PLAZA

---

Luxury Private Residences  
Serviced by Europe's First  
Pan Pacific Hotel

---

One Bishopsgate Plaza is for people whose lives never slow down. For whom there can be no compromise on quality – quality of time, quality of service and quality of life.

One Bishopsgate Plaza offers no compromise. A new landmark tower located in the true heart of the City, on a major transport hub, with access to the offices of global institutions right on your doorstep.

But what truly sets the apartments at One Bishopsgate Plaza apart is their situation: arranged across 20 levels above a new Pan Pacific hotel – the first in Europe. Offering access to hotel services below and private amenities above, seamlessly integrating into your busy daily life.

World-class apartments above a world-class hotel in a world-class city location. Quite simply, a life without compromise.

LUXURY ON  
EVERY LEVEL



## The Sky Residences

Soaring above the City from level 21 to 41, the Sky Residences have unique views of some of London's most iconic landmarks; including the River Thames, Tower Bridge, the Tower of London, The Gherkin, St Paul's Cathedral and Canary Wharf

The collection of exceptionally specified one, two and three bedroom apartments, accessed via private lifts from the ground level, benefit from a complete selection of amenities and à la carte services made possible by the luxury hotel below.



## Hotel

Europe's first Pan Pacific hotel with interiors conceived by world renowned designers Yabu Pushelberg has set a new standard of quality for the successful hotel group and has created a new destination in the City.

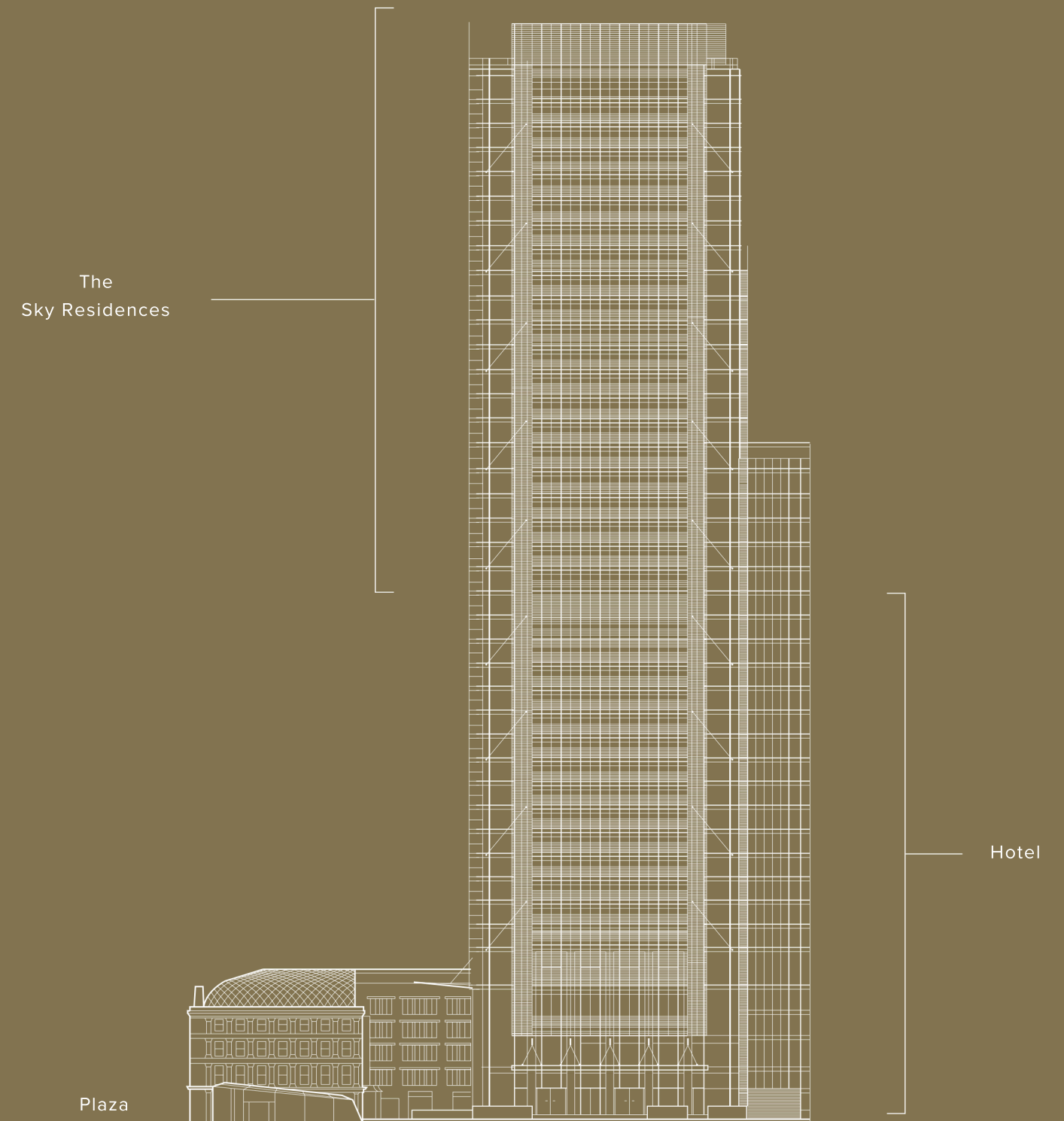
The hotel offers a grand ballroom, five levels of amenities for residents to enjoy and a range of rooms and suites designed with complete relaxation in mind. And above all, the warm welcome from a resourceful team that really sets Pan Pacific apart.



## Plaza

Bishopsgate Plaza establishes a new public square in the heart of the City and an impressive setting for architect PLP's grand tower. Framed by Devonshire Row, the third floor houses a bar by world renowned designer, Tom Dixon, with designs complementing the existing architecture and heritage of this beautiful building.

Alongside exclusive retail it is an inspiring destination for Londoners and international visitors alike.







The main entrance and taxi drop off located on Houndsditch





## Your Sanctuary in the Sky

—

The Sky Residences at One Bishopsgate Plaza represent the epitome of contemporary luxury living.

The unique location with its imposing views is only the beginning. Each day opens up new and exciting possibilities – from the convenience of the hotel's services to the sense of comfort, privacy and security that can only be created within your own home.





## The City on Your Doorstep

---

It is a rare opportunity to live in the heart of the City of London. One Bishopsgate Plaza gives you access to this opportunity and the powerful benefits it brings.

London is a global financial centre and the Square Mile is at its historic heart, populated by FTSE100 businesses and the headquarters of global multinationals – many within walking distance of the development.

One Bishopsgate Plaza sits on a transport hub that provides quick access to all points of London, including the West End, Canary Wharf, London City Airport, Heathrow and Eurostar.

The introduction of the new Elizabeth Line Crossrail services from Liverpool Street Station in 2022 will cut journey times and bring London – and the world ever closer.



## The Beauty of Time

---

We understand that time is your most valuable commodity. And that is why life at One Bishopsgate Plaza has been designed to help you maximise it. From an unparalleled location, attentive concierge services and access to hotel amenities, to a range of à la carte services – so that time is created for what really matters.

That could be more time to enjoy the simple things in life, spending time with friends and loved ones, or making the most of some time to yourself. A contemplative coffee, a reviving swim, a chance to read another chapter of a book in the library. Or more time to enjoy the journey because the destination is that much closer.



## A Home with Services on Demand

—

There is no substitute for services that are genuinely on demand – services that are designed to deliver everything you want, easily and quickly, every time.

From a light meal after a long flight to the perfect Martini after a busy day, the services of the Pan Pacific London are available night and day. A limousine to the airport or a mohair suit pressed for an early morning meeting – nothing seems impossible at One Bishopsgate Plaza.

# THE SKY RESIDENCES

---

## Where the Living is Exceptional

---

Life at One Bishopsgate Plaza is all about exceptional service and design, from the concierge who welcomes every resident by name, to the private lifts that go straight to the Sky Residences situated from level 21 to 41.

One Bishopsgate Plaza brings the elegance and sophistication of Mayfair to the City. Interiors are defined by a polished simplicity, with form and function playing equal roles. These are homes designed with the needs and desires of discerning individuals in mind.

When residents return after time away, they can choose from a menu of à la carte services such as apartment cleaning, linen services and flower delivery.





Landmark views await you in the Sky Residences



Open-plan living, dining and kitchen area in one of the three-bedroom apartments



Dual aspect dining areas in selected two- and three-bedroom apartments afford panoramic views of the City

The interiors complement the views without distracting from them. Soft neutral tones and a restrained, natural palette are a comfortable counterpoint to the glass and steel towers outside.







Two-bedroom apartment open plan living and dining area



One-bedroom apartment open plan living and dining area



Seamless flow of spaces - corridor and living space in one-bedroom apartment

# Space, Views and Comfort

—

Ideal for a social get together or contemplative time alone, every space offers a different view – from sunrise over Canary Wharf to sunset over the West End.

Pared back elegance and the seamless flow of open-plan, flexible space creates a relaxing home – perfect for a life that is always ‘on’.



Views from select two-bedroom apartment



Light filled bedrooms with a refined elegance



Bedrooms have been designed to combine the luxury of a hotel suite with the reassuring comfort of home.

Master bedrooms have been conceived as a suite with lighting control, dressing areas and en suite bathrooms.



Wake up to views across the City of London



One and two-bedroom apartments feature Volakas marble surfaces





Three-bedroom kitchen with Pietra Santa marble wrapped island unit

## Functionality and Elegance Combined

European kitchens with luxury fittings and finishes combine functionality with elegance. A full complement of integrated Miele appliances completes the picture.

One- and two-bedroom apartments feature Volakas white marble surfaces. Whilst three-bedroom apartments are specified with darker Pietra Santa marble.

The calm, neutral palette is designed to work with statement pieces and textures to create a distinctive London ambience.



Three-bedroom kitchen with Pietra Santa marble wrapped island unit



One-bedroom apartments have a shower with a frameless smoked-glass enclosure. In addition to the master bathroom, two-bedroom apartments have a family bathroom with a combined shower and bath set within a marble enclosure.

Three-bedroom apartments have generous master bathrooms, with a bath and separate shower enclosure, large marble enclosed basin and vanity and Volakas marble surround.



# A LIFESTYLE OF CONVENIENCE

—

## Exclusively Yours at One Bishopsgate Plaza

—

What does it really mean to live with access to a luxury hotel? At One Bishopsgate Plaza, it means access to Pan Pacific London's amenities and services, from the bars and restaurant with private dining to the gymnasium, wellness area and swimming pool in a vantage point overlooking Bishopsgate.

It provides the ultimate convenience of bringing all spheres of life under one roof. You can work without leaving the comfort of your home and if you need more formal surroundings, there is a business centre and meeting rooms. When family, friends or colleagues visit, you can play host in the private residents' club, leaving your own personal space uncompromised.

And in addition, a wide range of à la carte services – including in-home services and even a butler – are available on a pay as you go basis to meet residents' exacting personal needs.

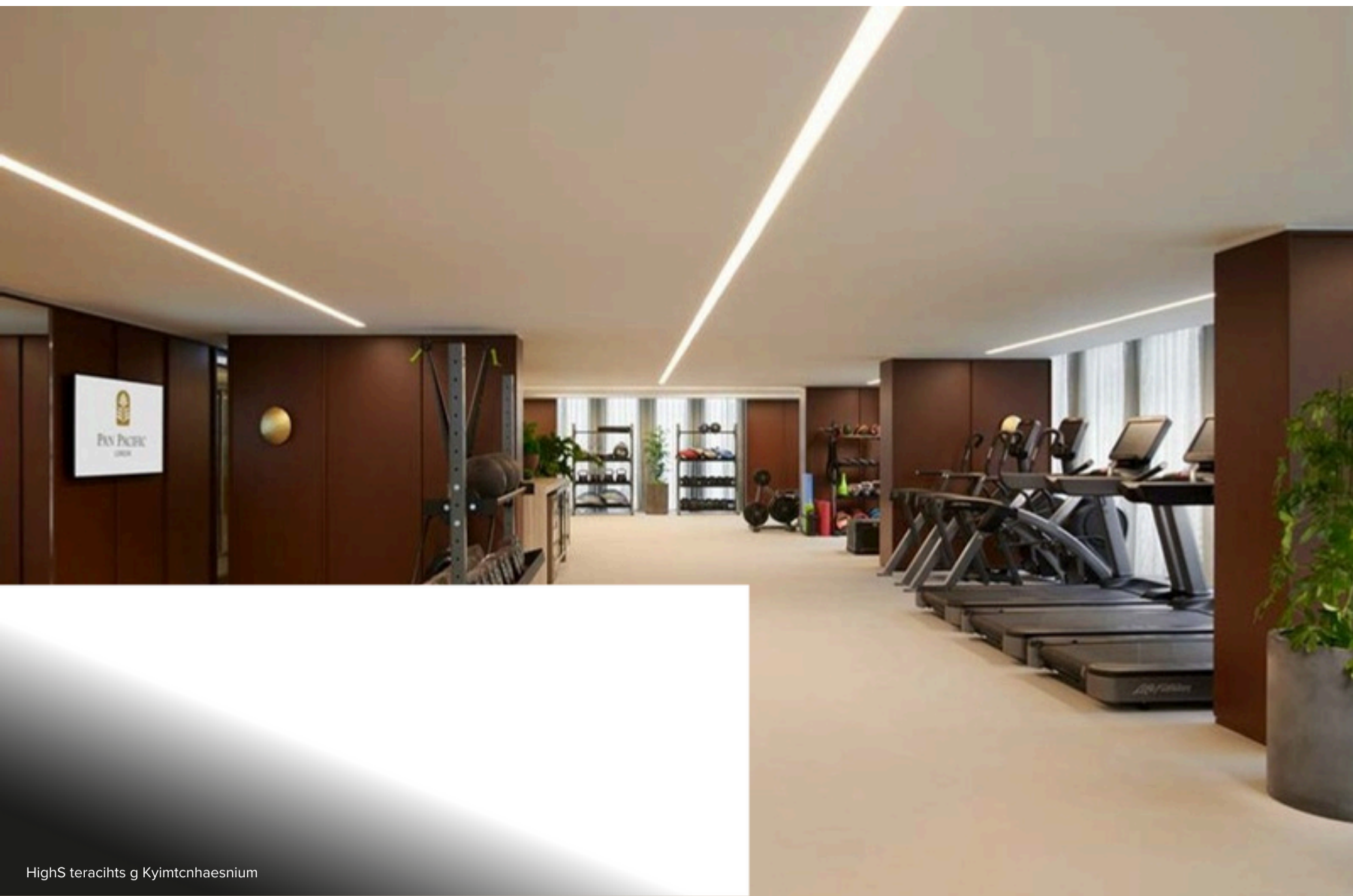


The light-filled swimming pool within the leisure suite on the fourth level is the perfect place to relax and reflect on life in the City

Escape the bustle of city life  
and enjoy this oasis of calm  
overlooking the public plaza and  
Bishopsgate beyond.







HighS teracihts g Kyimtcnhaesnium

# World-class Wellness

Focus on your mind and body at the world-class wellbeing floor dedicated exclusively to holistic health, featuring the most technologically advanced facilities showcased by any hotel gym in the UK.

A truly personalised approach to wellbeing is practised, with everything from treatments to customised exercise, mindfulness studios, nutritional bars and an expert team of health professionals available to help you achieve your specific goals.

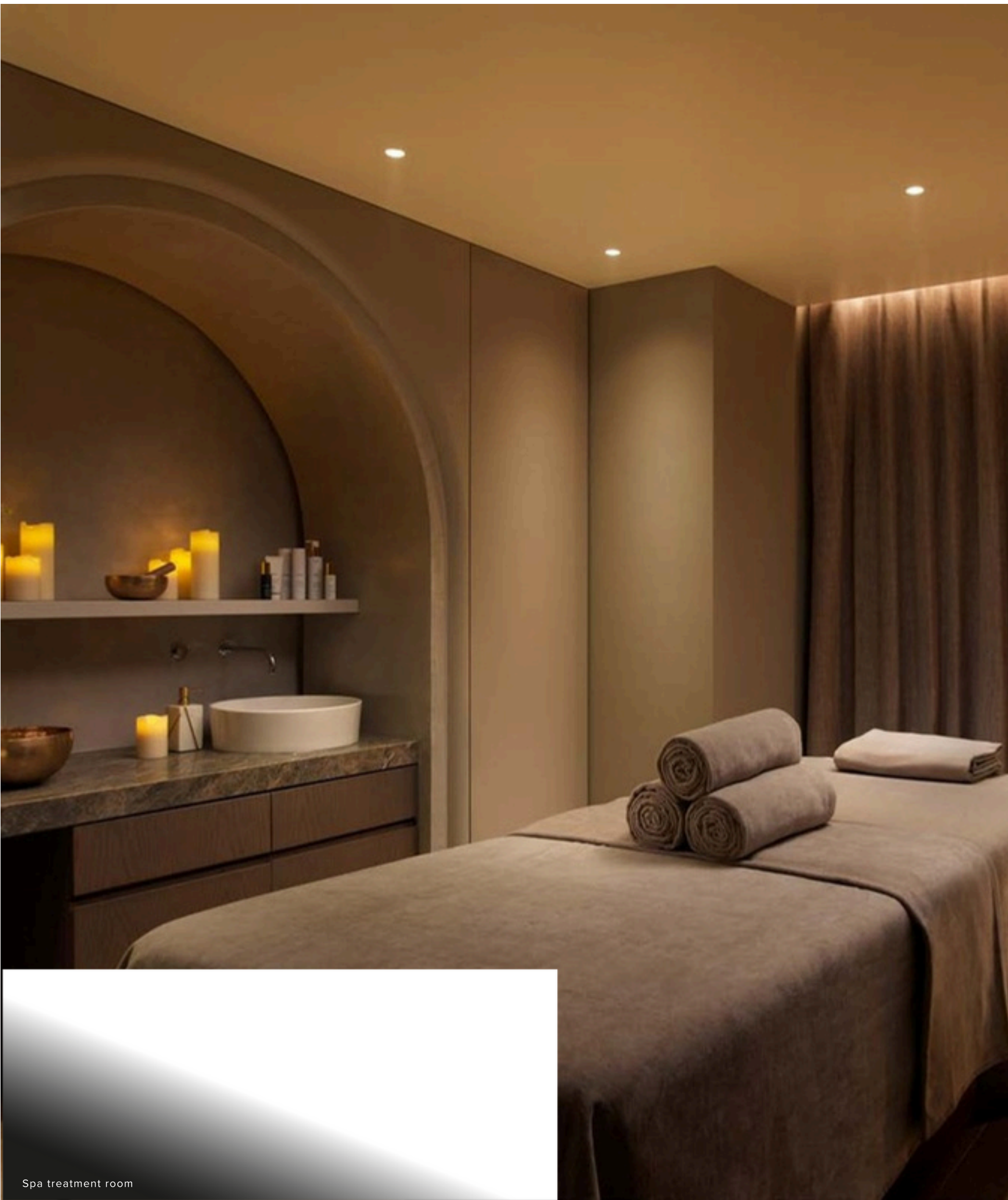
The cutting-edge gym boasts high-performance equipment – including the D-Wall system, the first of its kind in any hotel across the UK – to offer a truly interactive space.

Two indulgent treatment rooms are designed to de-stress both body and mind, together with sauna and steam rooms for soothing, cleansing and finding your balance.

Treatment menus combine the best of Eastern and Western techniques and remedies, and the expert team tailor everything to individual requirements.

The Mindfulness Studio provides a dedicated space for reflection and relaxation. With a focus on self-care, you can enjoy yoga, meditation, Pilates, barre and gong therapy.

A complete wellbeing programme is available in guestrooms for those who don't want to leave the comfort of their well-appointed accommodation. From spa services to self-care experiences and high-intensity workouts, the team can provide everything required for focusing on wellness in private.



Spa treatment room





Residents' private library and lounge bar





Views across the City of London from the residents' private lounge bar



Residents' private lounge bar

## Exclusive Residents' Lounge, Concierge and Sky Lobby

Level 20 marks the separation between hotel and the Sky Residences. The residents' lifts take you to a private lobby where you will instantly feel at home. This calm, welcoming space has the design, atmosphere and exclusivity of a private club. Here you can take time to relax, enjoy refreshments or meet friends and business associates.

On Level 33, there is further amenity space for residents, with an informal club room where you can relax in front of the big screen, play pool or sit out on the terrace on Level 34 and enjoy expansive views across London. There are few better places to wind down on warmer evenings.

- Lounge Bar
- Reception/Concierge
- Library
- Club Room
- Private Meeting Rooms
- Sky Terrace





## Personal À La Carte Services

---

A home with bespoke services on demand is one where you can enjoy ultimate ease and convenience. At One Bishopsgate Plaza, a menu of additional services have been curated for residents – personalised services delivered direct to your door.

Perhaps you would like someone to deliver fresh flowers? Secure that elusive table at the best new restaurants, book transportation or arrange for the paper to be delivered to your door each morning.

You might want a housekeeper to take care of your laundry or a butler to unpack your luggage or arrange a last-minute meal.

You would expect these services in a world-class hotel. And at One Bishopsgate Plaza you have access to these services in your very own home.

Services include:

- Flower Service
- Babysitting
- Grocery Delivery/Fridge Stocking
- Apartment Cleaning
- Room Service
- Butler Service
- Daily Newspaper Delivery
- Wellness Treatments
- Personal Swimming Trainer
- Meeting Room/ Event Hire



Fresh flower service



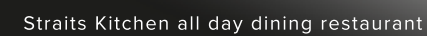


The impressive arrival and grand staircase at the Pan Pacific Hotel London



When you are new to a city, or routinely travelling, it takes precious time to arrange small – but vital – details, such as where to get a late night meal or who will collect the dry cleaning. When you live at One Bishopsgate Plaza those worries are taken care of, leaving you time to focus on what really matters.

Ginger Lily bar  
Straits Kitchen all-day-dining restaurant  
The Orchid Lounge  
Private Dining Rooms  
Heated 18.5m infinity pool  
State-of-the-art high performance gym  
Mindfulness Studio  
Treatment Rooms  
Living Room  
Multiple meeting rooms and  
the Pacific Ballroom







# Unique Dining Experiences

Embracing a respectful approach to cooking based on heritage recipes, the menu in Straits Kitchen showcases a melting pot of cuisines from Singapore's many cultures. Serving breakfast, lunch and dinner, the restaurant features floor-to-ceiling windows overlooking the Plaza, while two private dining rooms enable guests to enjoy a selection of set menus to suit all tastes and occasions.

Sitting alongside Straits Kitchen are Newton and Katong, two intimate private dining rooms accommodating all tastes and occasions, from working breakfasts to lunch hour meetings and celebratory dinners.

Finally Ginger Lily provides the excitement of Singaporean bar culture in London. This lively space boasts an extensive champagne list and carefully-curated cocktails.







Enjoy an extensive champagne list and carefully-curated cocktails at Ginger Lily



London's famous Square Mile is the place to do business, a hub at the centre of the time zones. One Bishopsgate Plaza uniquely places residents in the heart of this dynamic global location.

But what it remains is a rarefied place, home to only a chosen few.





## The City of London

### Shopping

- 1 Royal Exchange
- 2 Leadenhall Market
- 3 One New Change
- 4 Devonshire Row and the Plaza
- 5 Old Spitalfields Market

### Cocktail Bars

- 1 Neo Barbican
- 2 The Alchemist
- 3 Vertigo 42
- 4 The Anthologist
- 5 Mayor of Scaredy Cat Town
- 6 Proud Cabaret City
- 7 Demon, Wise & Partners
- 8 Oriole Bar

### Members' Clubs

- 1 The Ned
- 2 Shoreditch House
- 3 The Curtain
- 4 Eight

### Restaurants

- 1 The Mercer
- 2 Forge
- 3 SUSHISAMBA
- 4 Duck and Waffle
- 5 1 Lombard Street
- 6 Angler
- 7 Bread Street Kitchen
- 8 Darwin Brasserie
- 9 La Dame de Pic
- 10 Mei Ume
- 11 The Ivy City Garden
- 12 Eataly

### Art & Culture

- 1 Tate Modern
- 2 Barbican Centre
- 3 Museum of London
- 4 Guildhall Art Gallery
- 5 London Mithraeum
- 6 Bloomberg SPACE

### Education

- 1 Guildhall School of Music & Drama
- 2 Cass Business School
- 3 London Metropolitan University
- 4 City of London School for Girls

### Businesses

- 1 Deutsche Bank
- 2 ING
- 3 BNP Paribas
- 4 Cazenove
- 5 Bank of England
- 6 Lloyds Banking Group
- 7 Bank of China
- 8 Swiss Re
- 9 Nomura
- 10 Mitsubishi UFJ Financial Group
- 11 Bloomberg
- 12 UBS
- 13 London Stock Exchange
- 14 Goldman Sachs
- 15 Bank of America
- 16 Linklaters LLP
- 17 Allianz Global Investors
- 18 Ashurst
- 19 AXA Investment Managers
- 20 DLA Pipers UK
- 21 Henderson Global Investors
- 22 QBE
- 23 SAS
- 24 TP ICASP

## From Liverpool Street Station

Two minutes walk from One Bishopsgate Plaza

### Airport & Eurostar

- 11 min Eurostar
- 27 min London City
- 35 min Heathrow T1
- 47 min Stansted
- 50 min Gatwick

### Crossrail

from 2022

- 6 min Canary Wharf
- 7 min Bond Street
- 10 min Paddington
- 33 min Heathrow Central

### London Underground

- 11 min King's Cross
- 11 min St Pancras
- 13 min Oxford Circus
- 13 min Bond Street
- 13 min London Bridge
- 13 min Farringdon



Devonshire Row and the new public plaza





## Devonshire Row and the Plaza: A Lifestyle Destination on Your Doorstep

—

London's squares are world famous and Bishopsgate Plaza is a new addition to an illustrious list. It plays a vital role for residents at One Bishopsgate Plaza too, providing breathing space to ease the transition between home and the busy streets beyond.

Alongside the plaza runs Devonshire Row, a glimpse into London's history with a café and concept retail behind listed façades that provide an elegant counterpoint to the glass and steel towers that surround them. The rooftop restaurant that overlooks the plaza is set to become a key new dining spot for the City.

The City's retail destinations are within easy reach on foot

Old Spitalfields Market - 7 mins  
Leadenhall Market - 8 mins  
The Royal Exchange - 9 mins

Only fastest time shown  
Source: Citymapper



Ginger Lily alfresco dining overlooking Bishopsgate Plaza





## A Global City for Commerce

London has long been the world’s most attractive financial centre – home to the world’s oldest stock exchange and more banks than any other global hub.

Many banks and insurance companies have their HQs here, as do some of the world’s biggest law firms, including those in the ‘magic circle’.

### Within walking distance

- Salesforce Tower
- The Gherkin
- The Walkie Talkie
- Tower 42
- The Leadenhall Building
- The Scalpel
- 110 Bishopsgate
- 30 St Mary Axe
- 20 Fenchurch Street
- 25 Old Broad Street
- 122 Leadenhall Street
- 52 Lime Street





## An International Seat of Learning

The prestige of London's universities, colleges and schools attract many overseas families seeking a British education for their children. Imperial and LSE are both within easy reach of One Bishopsgate Plaza and rank among the world's best universities. Prestigious King's College London on The Strand is also nearby.

There are many first class schools that see fierce competition for places. The Square Mile is well-placed to access them, including City of London School and St Paul's School.

And when education is complete, One Bishopsgate Plaza provides the perfect base for accessing high-calibre opportunities in the City, West End and Canary Wharf.

From your doorstep via public transport

Queen Mary's University of London - 15 min  
University of the Arts London - 16 min  
London School of Economics - 20 min  
Kings College London - 21 min  
University College London - 22 min  
City, University of London - 22 min  
University of Westminster - 25 min  
SAOS, University of London - 26 min  
London South Bank University - 26 min  
Imperial College London - 37 min

Only fastest time shown  
Source: Citymapper







## Perfectly Placed for Intercity and International Travel

The City of London has the rare luxury of an international airport within seven miles of its financial centre.

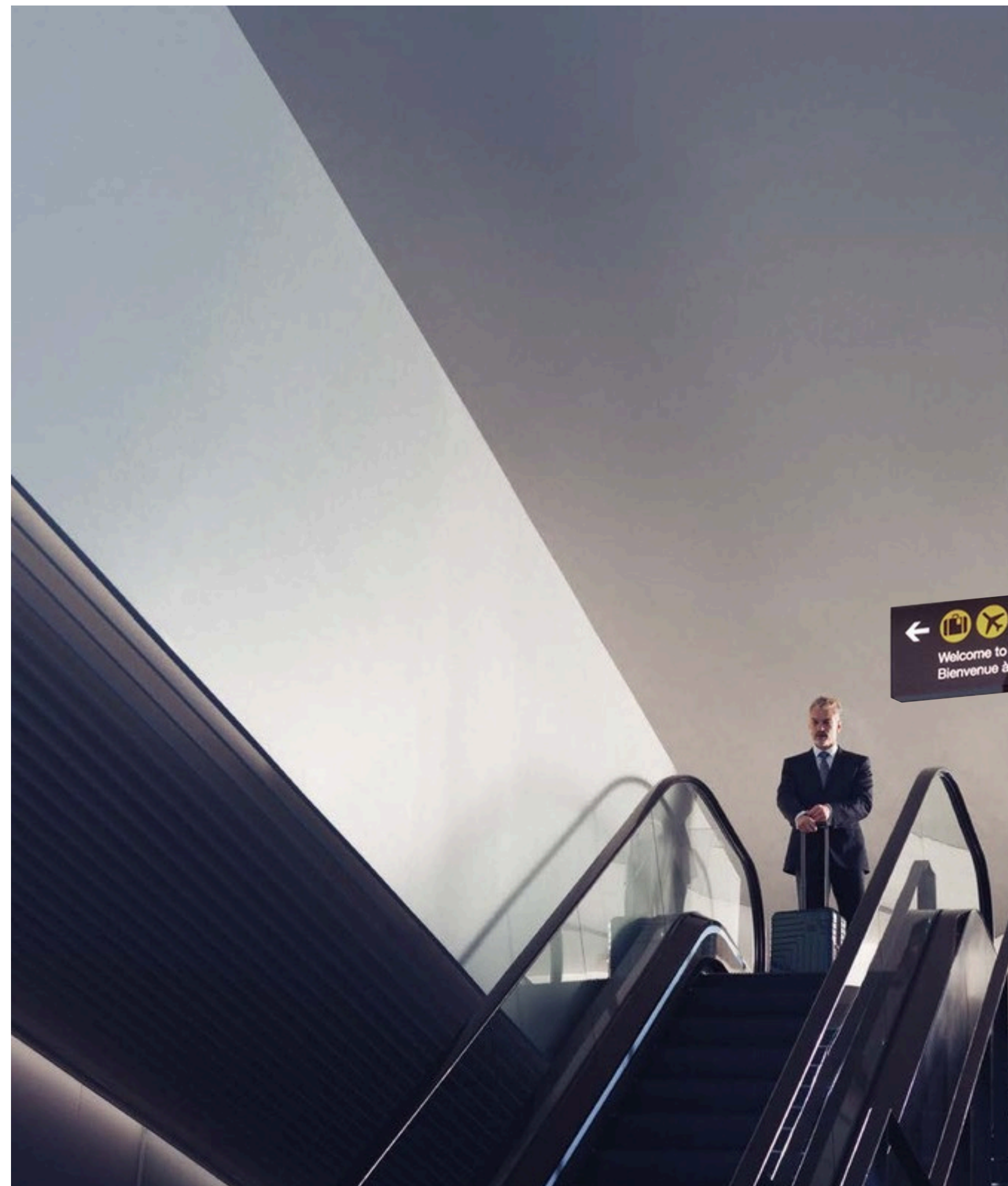
Heathrow, Gatwick, Stansted and Luton airports are also easily accessible from central London – and via Crossrail services from Liverpool Street station from 2022 – and Eurostar services from St Pancras International provide convenient overland access to Europe.

Via Liverpool Street Station two minute walk from One Bishopsgate Plaza

Eurostar - 11 min  
 London City Airport - 27 min  
 Heathrow T1 - 35 min  
 Stansted - 47 min  
 Gatwick - 50 min

London City Airport is only 27 minutes away

Only fastest time shown  
 Source: Citymapper







Luxury shopping in the City of London

## A Retail Destination

Whilst One Bishopsgate Plaza provides quick direct access to Bond Street and the West End, residents no longer need to venture outside of the Square Mile.

The Royal Exchange, originally built in the 16th century as the centre of commerce for the City of London, today houses a range of restaurants, cafés and luxury boutiques. Its central courtyard has an array of global brands including Hermès and Tiffany & Co.

For a more contemporary environment, the Jean Nouvel designed One New Change, near St Paul's Cathedral, is the area's largest shopping destination, home to a range of retail outlets and restaurants open every day of the week.

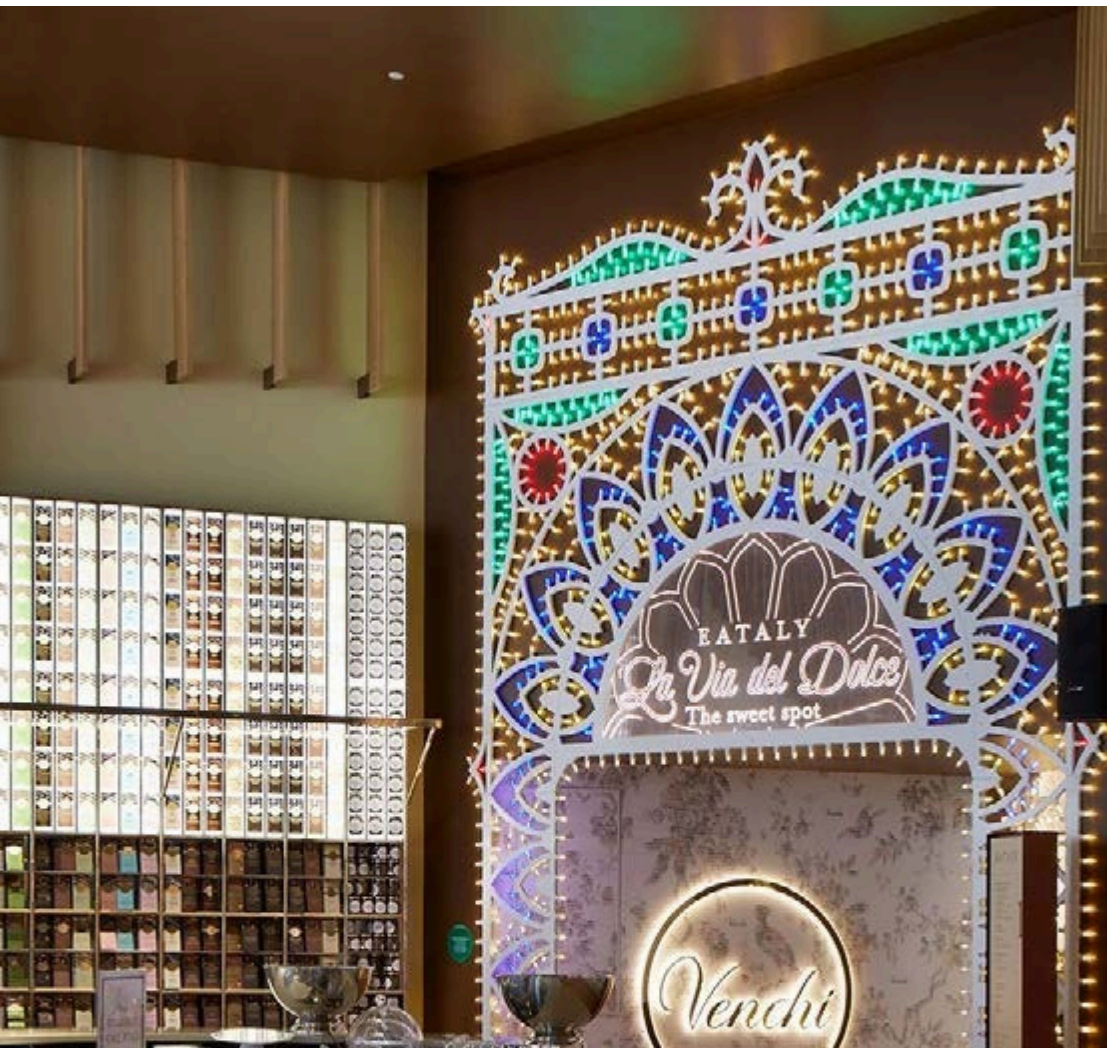
A selection of luxury retailers situated at The Royal Exchange seven minutes walk from One Bishopsgate Plaza -

- Aspinal of London
- Boodles
- Bremont
- Fortnum & Mason
- Hermès
- Ladurée
- Montblanc
- Omega
- Smythson
- Tiffany & Co



The Royal Exchange, Bank





Eataly, Italian restaurants and marketplace

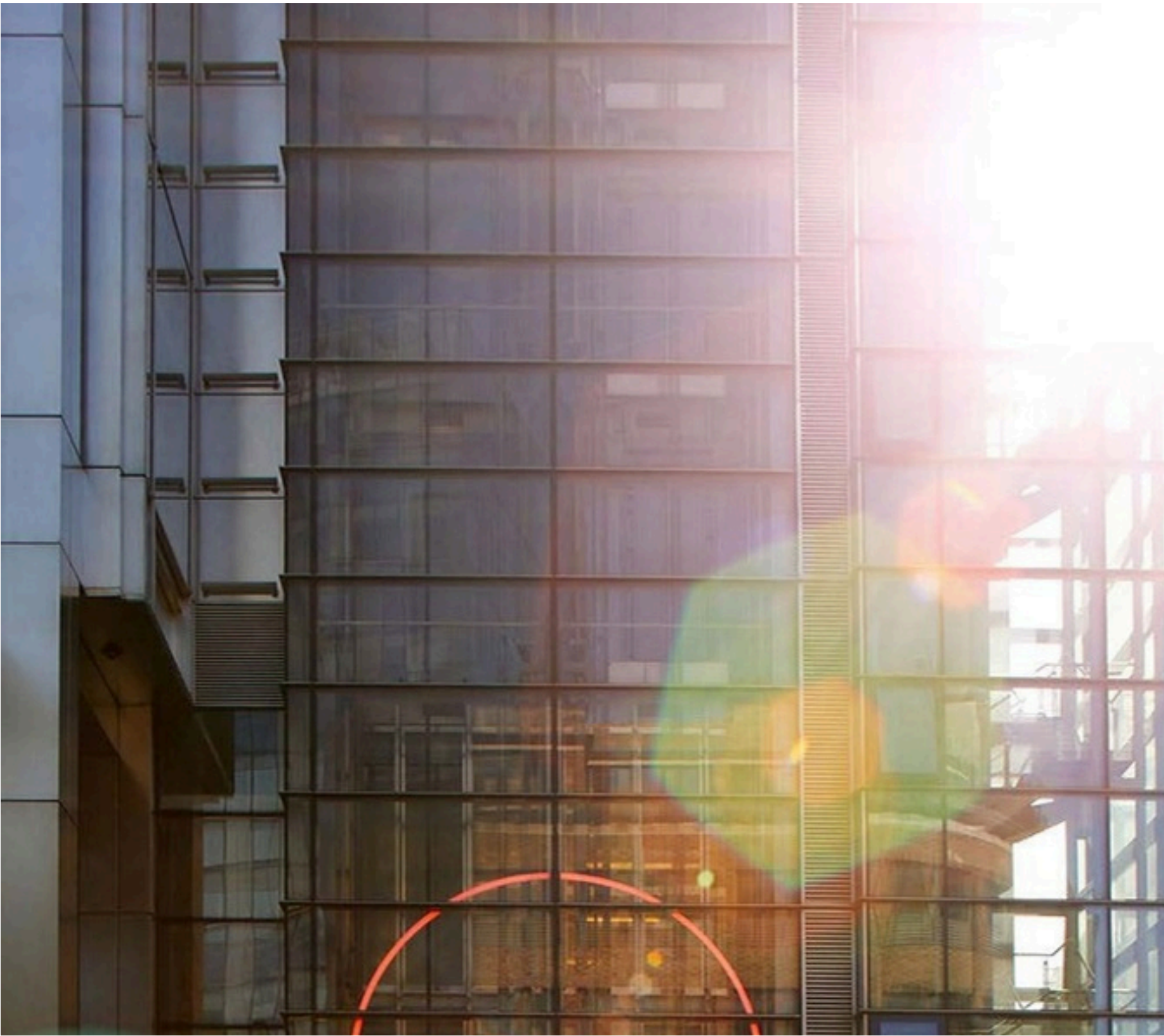
# Dining in the Height of Style

SUSHISAMBA and Duck & Waffle, both located next door to One Bishopsgate Plaza, are on the menu of lively restaurants that make the City a must-go dining district.

Many of them, set high in towers, come with panoramic views that stretch beyond London.

Within walking distance

- Eataly
- Duck & Waffle
- SUSHISAMBA City
- The Ivy City Garden
- Coq d'Argent
- Yauatcha City
- Jose Pizzaro Broadgate
- Cinnamon Kitchen City
- City Social
- Galvin La Chapelle
- The Mercer
- Angler
- Darwin Brasserie
- 1 Lombard Street
- The Ned
- Mei Ume
- Le Dame de Pic



40th floor restaurant, Sushi Samba





The Ned, a social and dining destination within easy reach



## A Sense of Belonging

—

The City is carving a reputation for a new generation of chic members' clubs – including The Ned.

With opulent interiors and first class facilities, they come with an aura of exclusivity that City workers enjoy, and a lively atmosphere.

The City has a social scene that has exploded in recent years, with ever-more elaborate offerings in increasingly inventive settings from the jungle-themed Oriole Bar to the Indian-inspired Anise.





# A WORLD- CLASS TEAM

---

A Collaboration Between  
Internationally Recognised  
Design Professionals

---

One Bishopsgate Plaza is the first tower development in the City that harmoniously fuses private apartments with a luxury hotel.

Behind it is a team of established designers and architects masterminded by respected developer UOL Group Limited. Between them they have created some of the most iconic residences, hotels and resorts in London and across the world.





UOL Group Limited is one of Singapore's leading public-listed property companies with an extensive portfolio of development and investment properties, hotels and serviced suites.

UOL strongly believes in delivering product excellence and quality service in all our business ventures. Our list of property development projects includes residential units, office towers and shopping malls, hotels and serviced suites. UOL, through our hotel subsidiary Pan Pacific Hotels Group Limited (PPHG), owns and/or manages over 30 hotels, resorts and serviced suites in Asia, Oceania and North America under two acclaimed brands, namely 'Pan Pacific' and PARKROYAL.

Our unwavering commitment to architectural and quality excellence is reflected in all our developments, winning us prestigious awards such as the FIABC Prix d'Excellence Award, Aga Khan Award for Architecture, Urban Land Institute Awards for Excellence and President's Design Award.

As we stay true to our core values, building on Passion, Innovation, Enterprise, Corporate Social Responsibility and People, we continue to leverage our strengths to create long-term value for our stakeholders.





Pan Pacific Hotels Group is a wholly-owned hotel subsidiary of Singapore-listed UOL Group Limited, one of Asia's most established hospitality and property companies with an outstanding portfolio of investment and development properties.

Voted 'Best Regional Hotel Chain' by readers in Asia in 2017 and 2018, Pan Pacific Hotels Group comprises two acclaimed brands: its signature brand, Pan Pacific and its deluxe brand, PARKROYAL.

Sincerity is the hallmark of Pan Pacific Hotels Group. The Group is known to its guests, partners, associates and owners for its sincerity in people and the sense of confidence which alleviates the stresses of today's complex world.



Pan Pacific Hotels and Resorts is your safe harbour in the ever-changing world. Their footprint stretches across 25 choiced hotels, resorts and serviced suites in Asia, Oceania, North America and Europe, providing dependable places to live, work and play by integrating warm people, thoughtful processes, intuitive design, and integrity throughout.

[www.panpacific.com](http://www.panpacific.com)