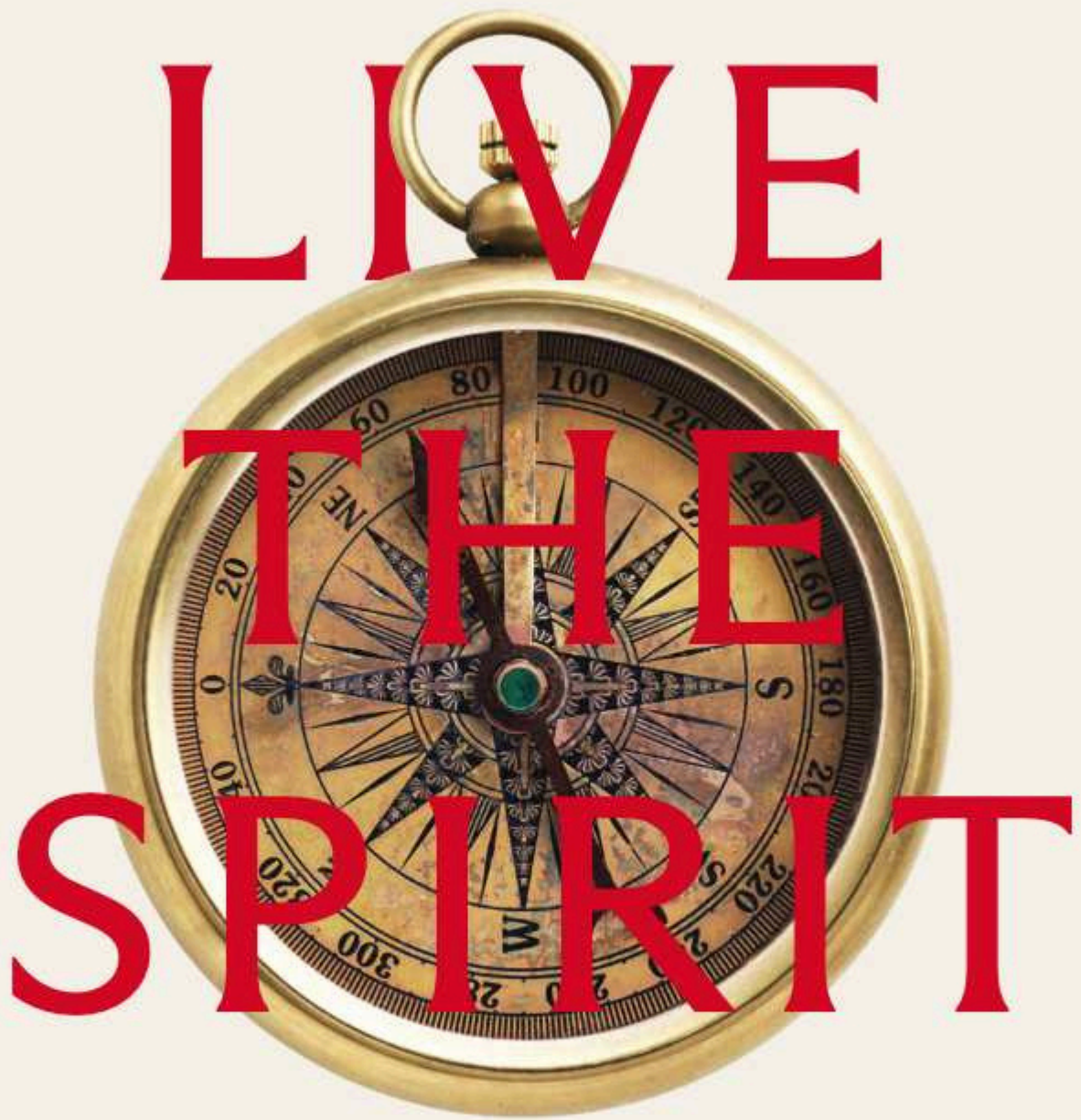
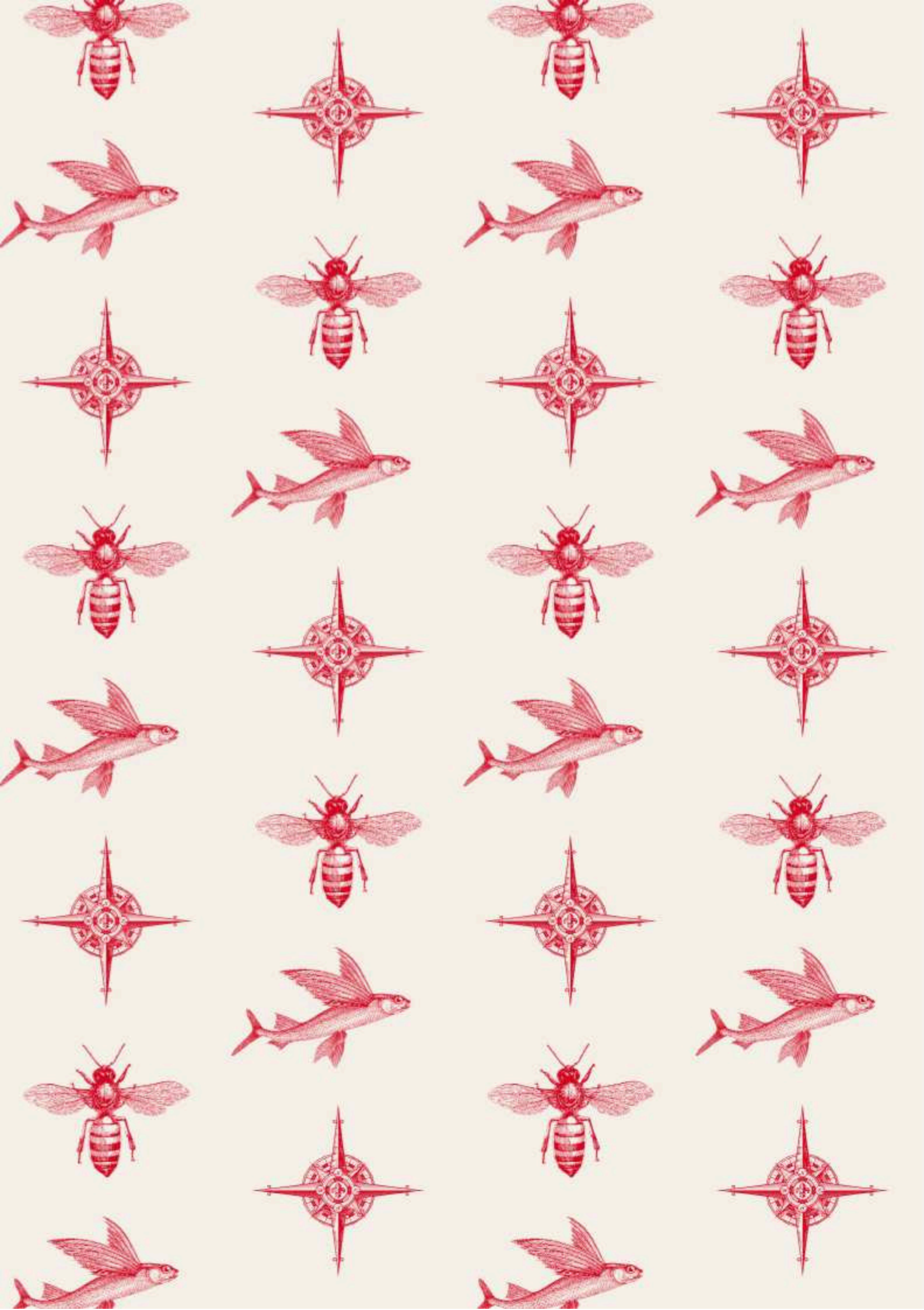


LONDON DOCK

WAPPING



St George  
Designed for life



SIT DOWN

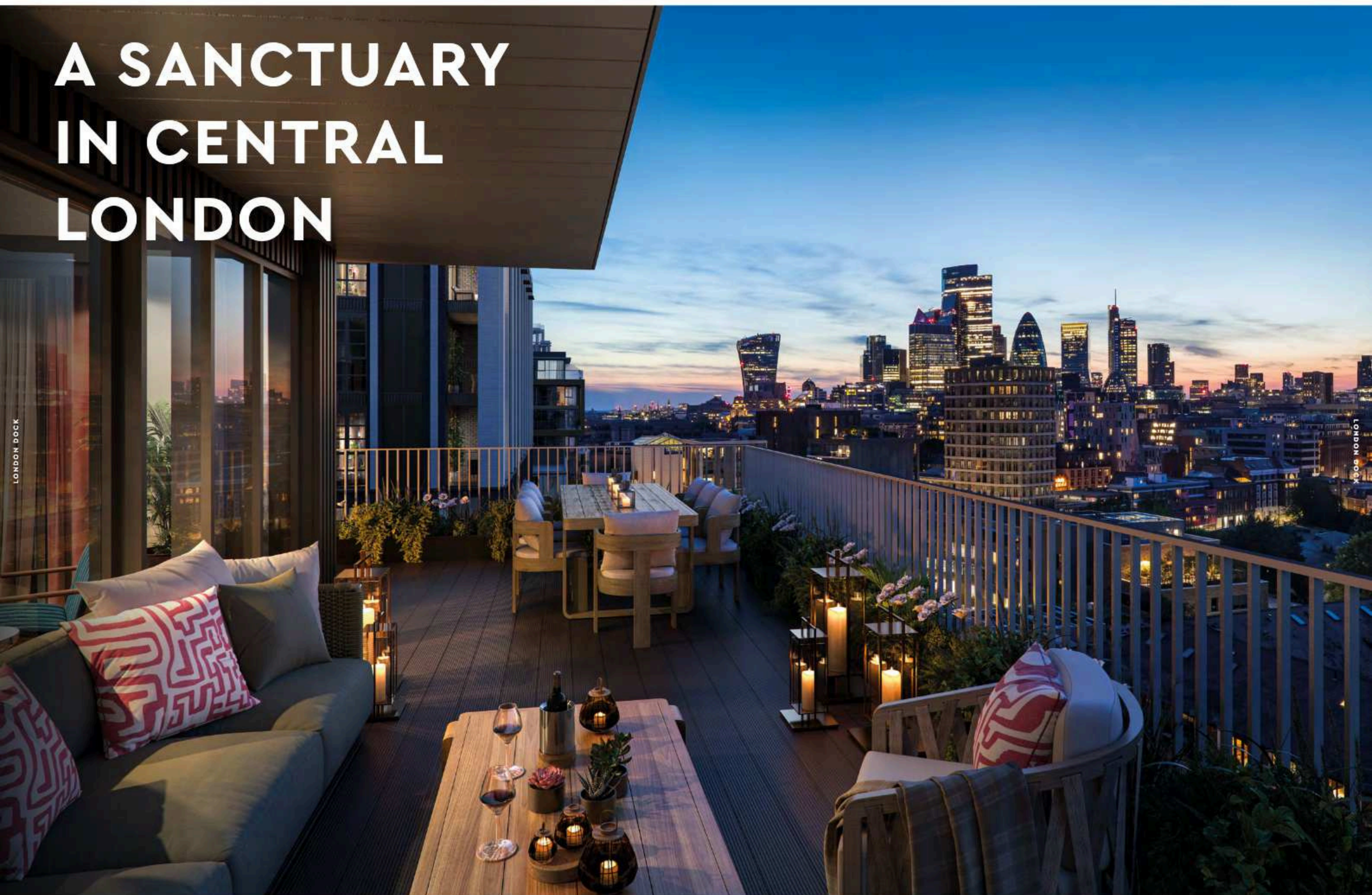
RELAX

OPEN YOUR MIND TO  
A WHOLE NEW WORLD  
OF OPPORTUNITY

THIS IS LONDON DOCK



# A SANCTUARY IN CENTRAL LONDON



LONDON DOCK



# LONDON DOCK



LONDON  
EYE

THE SHARD

TOWER  
BRIDGE

THE TOWER  
OF LONDON

WAPPING

LONDON  
BRIDGE  
STATION

WAPPING HIGH  
STREET

LONDON  
BRIDGE

TOWER HILL  
STATION

THE CITY  
OF LONDON

ALDGATE EAST  
STATION



LONDON DOCK

LONDON DOCK



# THE LONDON DOCKS – A GATEWAY TO THE WORLD

The docks gave London a connection to the world. A connection that created the first truly global city.

Built in 1803, the London Docks helped inform and shape what we know as the Spirit of London. It is an influence that endures to this day.

**"THIS GREAT PUBLIC WORK WILL MAKE LONDON THE FIRST PORT OF THE WORLD, AS IT IS ALREADY THE FIRST CITY OF THE WORLD."**

William Daniell  
Painter and printmaker



AN ELEVATED VIEW OF THE NEW DOCK IN WAPPING.  
PRINT MADE BY WILLIAM DANIELL, 1803.

1803

LONDON DOCK



A green jade sculpture of a mythical creature, possibly a Qilin, resting on a dark, ornate base. The creature is depicted in a standing pose, facing right, with a long, flowing mane and a small horn. It is positioned on a dark, circular base with gold-colored decorative patterns.

A large, dark-stained wooden barrel with several horizontal staves and metal hoops. It appears to be made of oak or a similar hardwood. The barrel is shown from a slightly low angle, emphasizing its height and rounded shape. The top of the barrel is visible, showing a flat, light-colored surface, possibly a lid or a piece of parchment. The background is plain white.A large, dark-stained wooden barrel with several horizontal staves and metal hoops. It appears to be made of oak or a similar hardwood. The barrel is shown from a slightly low angle, emphasizing its height and rounded shape. The top of the barrel is visible, showing a flat, light-colored surface, possibly a lid or a piece of parchment. The background is plain white.

1896

THE GAUGING GROUND AT THE LONDON DOCKS  
TAKEN BY ALFRED NEWTON & SONS

IMAGE SOURCE: HERITAGE IMAGE PARTNERSHIP LTD / ALAMY STOCK PHOTO

1896

THE GAUGING GROUND AT THE LONDON DOCKS  
TAKEN BY ALFRED NEWTON & SONS

IMAGE SOURCE: HERITAGE IMAGE PARTNERSHIP LTD / ALAMY STOCK PHOTO

'The Gauging Ground' at the London Docks was where 'gaugers' measured the quantity in each barrel. Today's Gauging Square pays tribute to this.

A woman with dark hair tied back, wearing a light-colored sleeveless top and white trousers, walks along a modern, paved walkway. She is carrying a brown shoulder bag. To her left is a low, light-colored wall. To her right is a narrow canal with a dark, reflective surface. In the background, a modern building with large windows and balconies stands behind lush green trees. The scene is brightly lit, suggesting a sunny day.

**"THE DEVELOPMENT  
HONOURS THE HISTORY  
OF WAPPING AND THE  
DOCKS – THAT'S WHAT  
GIVES IT SPIRIT"**

London Dock Resident

A vintage teal-colored typewriter with a black keyboard and a large, curved paper support. The typewriter has a classic design with a prominent paper support and a large, curved paper support. The keyboard is black with white lettering on the keys. The body of the typewriter is a light teal color. The paper support is a large, curved, black plastic or metal piece that holds the paper in place. The typewriter is shown from a front-three-quarter view.

**THE LAST BARREL TO LEAVE THE LONDON DOCKS**

IMAGE SOURCE: @LONDON MUSEUM/ PIA COLLECTION

**THE LAST BARREL TO LEAVE THE LONDON DOCKS**

IMAGE SOURCE: @LONDON MUSEUM/ PIA COLLECTION

A vintage teal-colored typewriter with a black keyboard and a large, curved paper support. The typewriter has a classic design with a prominent paper support and a large, curved paper support. The keyboard is black with white lettering on the keys. The body of the typewriter is a light teal color. The paper support is a large, curved, black plastic or metal piece that holds the paper in place. The typewriter is shown from a front-three-quarter view.

A vintage teal-colored typewriter with a black keyboard and a large, curved paper support. The typewriter has a classic design with a prominent paper support and a large, curved paper support. The keyboard is black with white lettering on the keys. The body of the typewriter is a light teal color. The paper support is a large, curved, black plastic or metal piece that holds the paper in place. The typewriter is shown from a front-three-quarter view.



# THE SPIRIT OF LONDON



MORE THAN  
JUST A CITY



LUXURIOUS LOCATIONS  
Enjoying mocktails at Engels in the Royal Exchange



1000'S OF SHIPS FROM  
1000'S OF PLACES  
BRINGING 1000'S OF  
PEOPLE WITH 1000'S  
OF IDEAS AND 1000'S  
OF ITEMS. THEY ALL CAME  
TOGETHER TO CREATE  
THE ELIXIR WE KNOW AS  
THE SPIRIT OF LONDON.

The docks helped establish  
London as a global centre for  
trade, a place of infinite wonder  
and seemingly boundless ideas.  
This helped make London the  
unique city that it is today.



TEA WAS MAINLY ENJOYED BY THE WEALTHY UNTIL TEA CLIPPERS  
SPED UP THE JOURNEY FROM CHINA TO THE LONDON DOCKS.



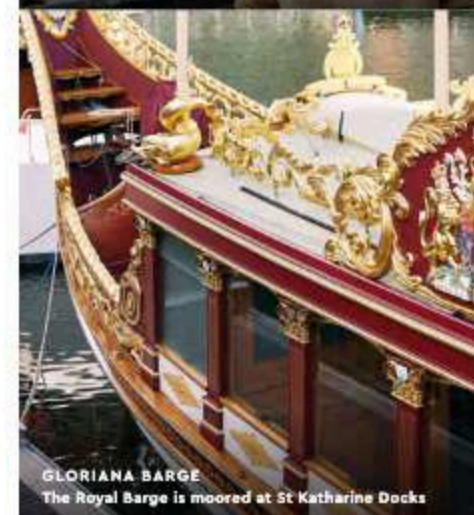
THE MAYOR'S THAMES FESTIVAL  
London's largest free festival



TOWER BRIDGE



ST KATHARINE DOCKS



GLORIANA BARGE  
The Royal Barge is moored at St Katharine Docks



SHAKESPEARE'S GLOBE & THE TATE MODERN  
Cultural icons sit side by side



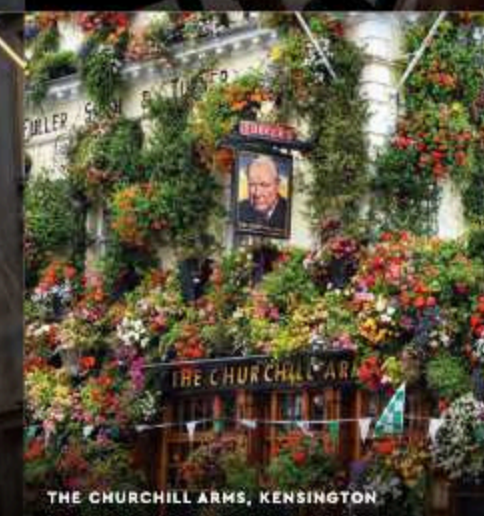
BREAKFAST AT TIFFANY'S?  
Engels in the Royal Exchange has exquisite tastes  
and views of classic luxury stores



BUCKINGHAM PALACE

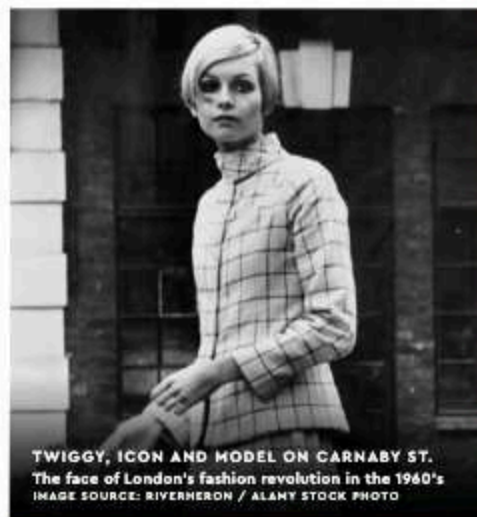


CORNHILL IN THE CITY



THE CHURCHILL ARMS, KENSINGTON





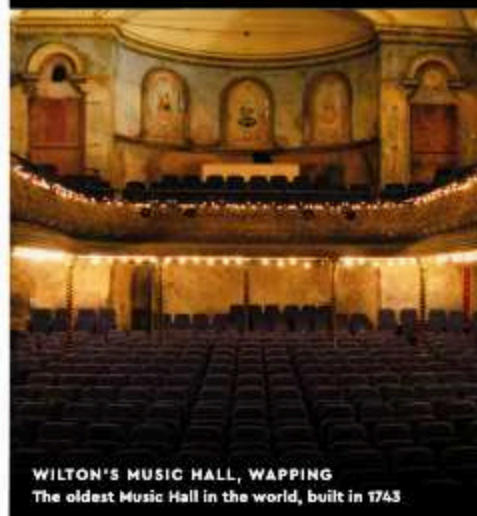
**TWIGGY, ICON AND MODEL ON CARNABY ST.**  
The face of London's fashion revolution in the 1960's  
IMAGE SOURCE: RIVERHEAD / ALAMY STOCK PHOTO



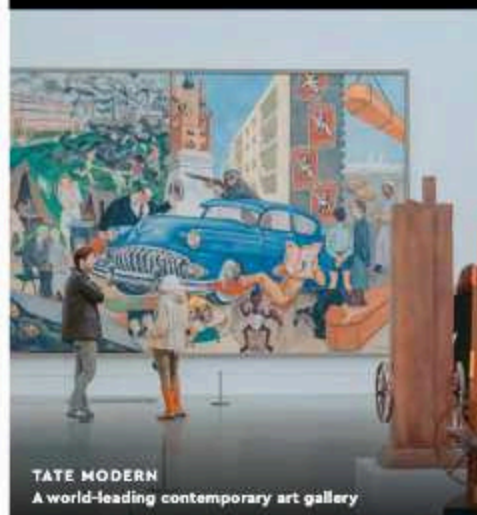
**LONDON FASHION WEEK**  
Generates over £100m each year



**STORMZY'S FAMOUS GLASTONBURY LOOK**  
Made by Banksy for the London rapper  
IMAGE SOURCE: WALDEMAR SIKORA / ALAMY STOCK PHOTO



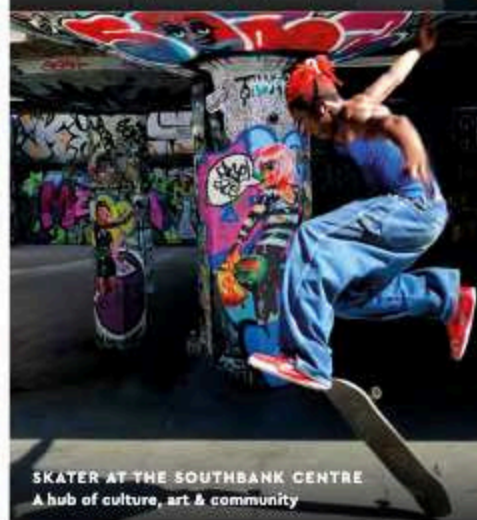
**WILTON'S MUSIC HALL, WAPPING**  
The oldest Music Hall in the world, built in 1743



**TATE MODERN**  
A world-leading contemporary art gallery



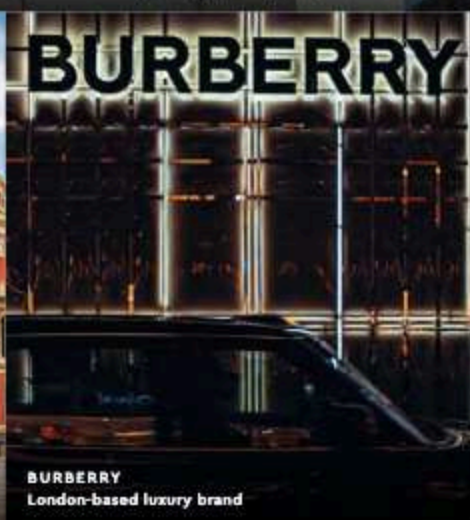
**BLUE COCKEREL - KATHARINA FRITSCH ON THE FOURTH PLINTH IN TRAFALGAR SQUARE**  
The Fourth Plinth is one of the world's most famous public art commissions, changing every two years



**SKATER AT THE SOUTHBANK CENTRE**  
A hub of culture, art & community



**THE ROYAL ALBERT HALL**  
A globally renowned performance venue



**BURBERRY**  
London-based luxury brand

FROM BOWIE TO BACON,  
QUEEN TO MCQUEEN,  
HOCKNEY TO HIRST AND  
BURBERRY TO THE BEATLES.  
THIS IS WHERE THE CREATORS  
CREATE AND THE MAKERS MAKE.

# A PLACE WHERE CULTURE THRIVES



IMAGE SOURCE: RAZORPIX / ALAMY STOCK PHOTO

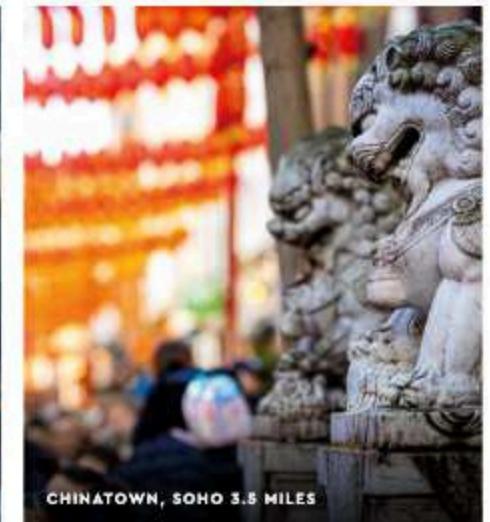
LONDON HAS INSPIRED SOME OF THE BEST SELLING ARTISTS EVER



London Dock sits centrally in one of the world's most important creative powerhouses, a city that has always been at the forefront of popular culture. From contemporary music to art, fashion, cinema and theatre, the Spirit of London continues to inspire each new generation.



TOWER OF LONDON & ST KATHARINE DOCKS 0.4 MILES



LIFESTYLE IMAGES ARE INDICATIVE ONLY 19



BE FUN.

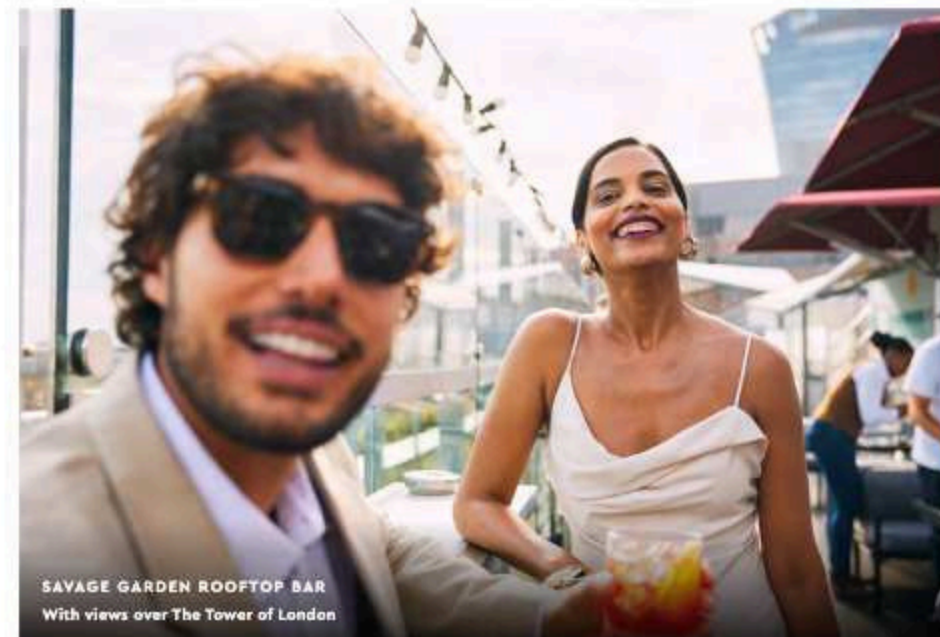
BE BRAVE.

BE DARING.

BE REAL.

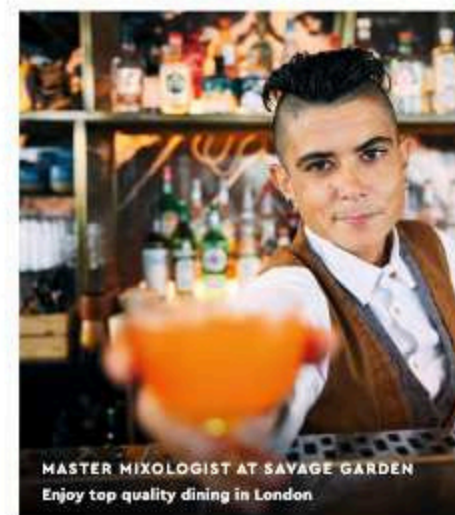
BE YOURSELF.

BE HERE.



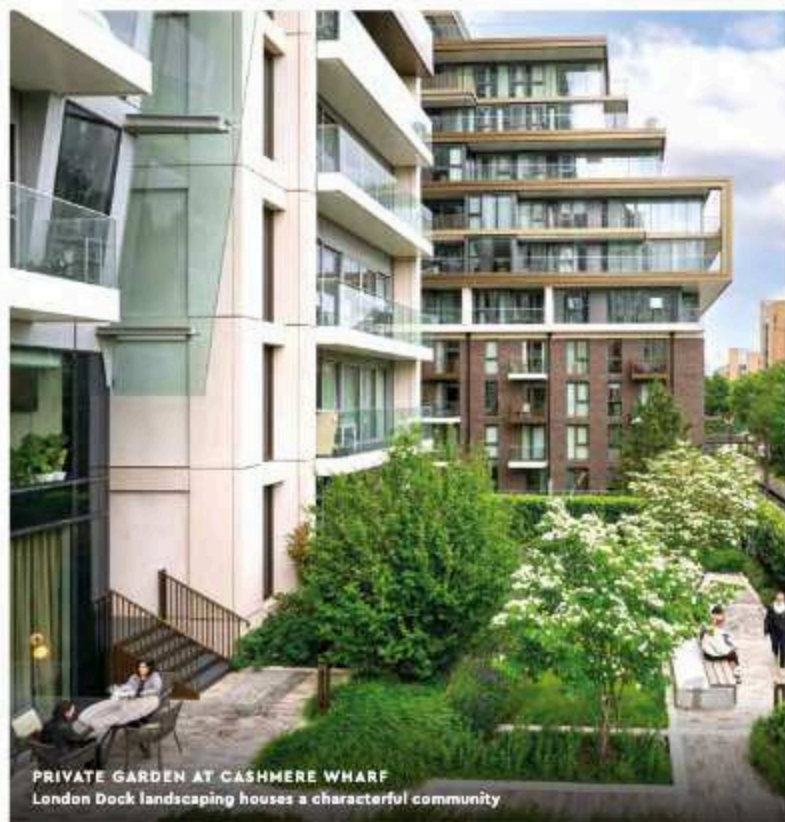
LONDON IS A PLACE WHERE PEOPLE THRIVE: ENERGISED AND INSPIRED BY THE CITY AND ITS INTERNATIONAL CONNECTIONS. CONNECTIONS THAT HAVE LAID THE FOUNDATIONS FOR LONDON BECOMING ONE OF THE MOST WELCOMING AND COSMOPOLITAN CITIES ON THE PLANET.

Home to communities from around the world, there are a myriad of ways that the people of London share their culture, relax and unwind. From it's fabulous fashion, to dining and leisure, and 197 London festivals, there is something for everyone.





# SAY HELLO

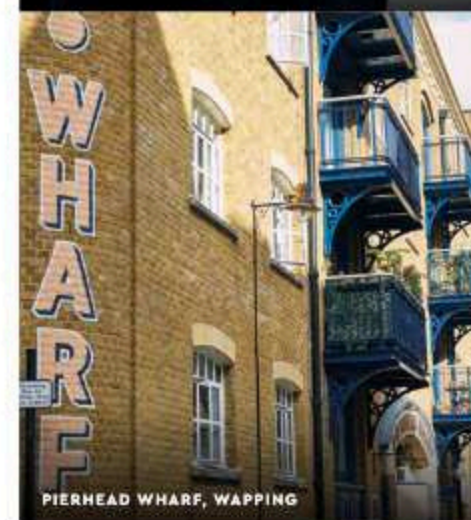


"WAPPING IS LIKE A  
HIDDEN GEM WITHIN  
THE CAPITAL WITH SO  
MANY INDEPENDENT AND  
EXCITING BUSINESSES  
ON YOUR DOORSTEP"

London Dock Resident

# TO A DIVERSE AND ESTABLISHED COMMUNITY

Wapping is a well established, secret enclave of London, set back from the hustle and bustle of central city life. Sitting on the banks of the River Thames, it is a short stroll from the iconic Tower Bridge, the Tower of London and St Katharine Docks. London Dock brings a new focal point to this community, a new place to meet, eat or just enjoy the laid back life with friends.





AN INVITING NEW NEIGHBOURHOOD SET  
WITHIN 7.5 ACRES OF OPEN SPACE. YOU CAN  
STROLL ALONG THE WATERSIDE PROMENADE,  
EXPLORE THE DELIGHTFUL PRIVATE  
RESIDENTS' GARDENS, OR VISIT GAUGING  
SQUARE – A HIVE OF ACTIVITY SURROUNDED  
BY SHOPS, BARS AND RESTAURANTS.



LONDON DOCK

25

COMPUTER-GENERATED IMAGE IS INDICATIVE ONLY

24





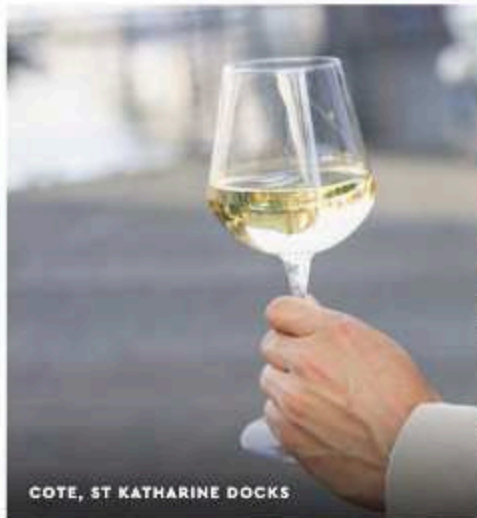
EXPLORE THE  
LOCAL AREA



RIVERSIDE PROMENADE BY TOWER BRIDGE

LIFESTYLE IMAGES ARE INDICATIVE ONLY 27

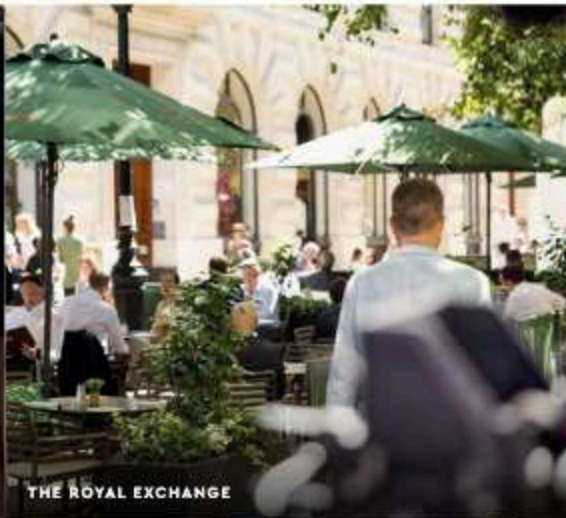




COTE, ST KATHARINE DOCKS



ENGELS, THE ROYAL EXCHANGE



THE ROYAL EXCHANGE



GAUGING SQUARE, LONDON DOCK



THE ROYAL EXCHANGE



ST KATHARINE DOCKS



GAUGING SQUARE, LONDON DOCK



WHITE MULBERRIES, ST KATHARINE DOCKS



WHITE MULBERRIES, ST KATHARINE DOCKS



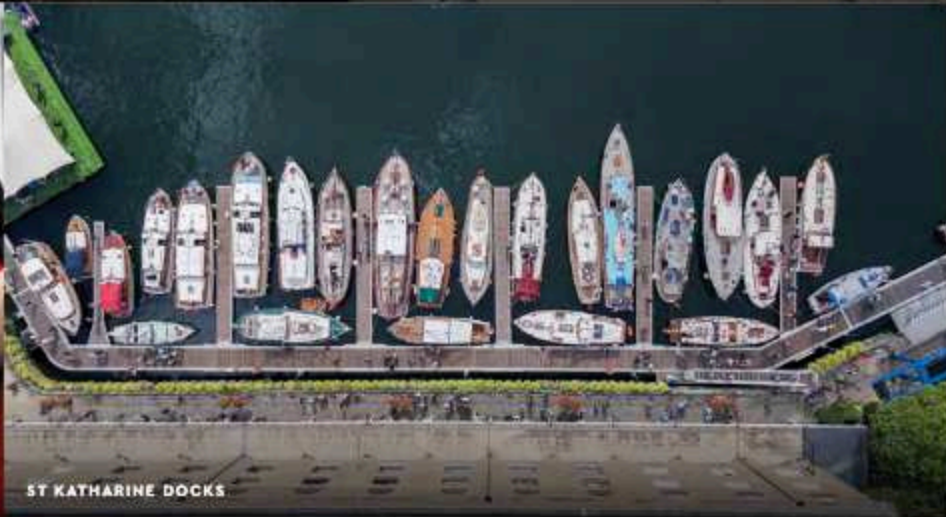
THE LEADENHALL BUILDING



VICINITY RESTAURANT, THE TOWER HOTEL



SAVAGE GARDEN ROOFTOP BAR



ST KATHARINE DOCKS



# DINING & RETAIL THERAPY



There are plenty of amazing locations to visit locally. With great choices for fine dining, spectacular views and shopping.

## THE CITY

1. The Anthologist
2. City Social
3. Coq D'Argent
4. Duck & Waffle
5. Goodman City
6. The Ivy Asia
7. Leadenhall Market
8. Madison
9. The Ned
10. One New Change
11. Royal Exchange
12. Sky Garden
13. Sushi Samba

## LONDON BRIDGE

14. Baluchi
15. Café Murano
16. Fleurie
17. Jose
18. Pizarro
19. Restaurants at the Shard
20. Restaurant Story
21. Roast
22. Tavolino
23. Trivet

## CITY VIEWS

24. 14 Hills
25. The Cardinal Bar & Kitchen
26. The Culpeper
27. Jin Bo Law
28. Florattica Rooftop London
29. Ottolenghi
30. Savage Garden
31. Spitalfields Market

## ICONIC LANDMARKS

32. St. Katharine Docks Restaurants & Bars
33. Cloud M
34. La Dame de Pic
35. The Ivy Tower Bridge
36. Legare
37. Vicinity Restaurant

## HISTORIC WAPPING

38. London Dock Restaurants & Cafés
39. Il Bordello
40. Prospect of Whitby
41. Smith's of Wapping
42. Town of Ramsgate
43. Wapping Tavern



# HEAD WEST FOR CITY SLICKERS & ICONIC SIGHTS



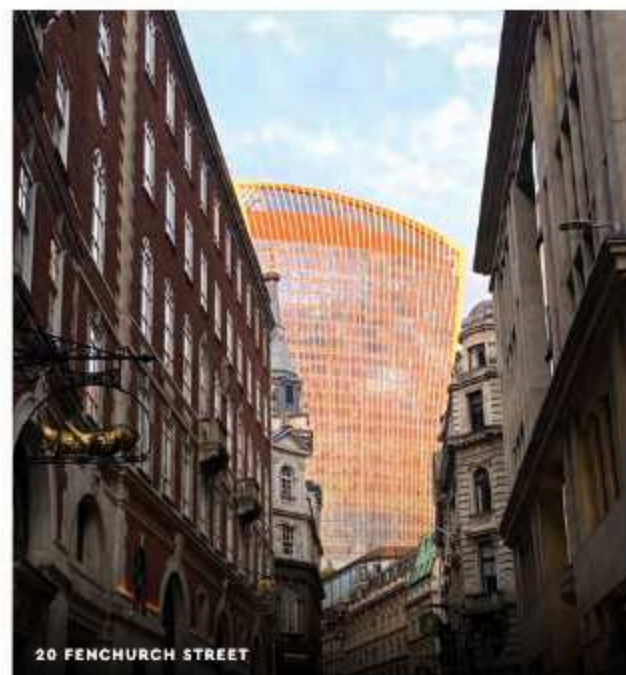
ENGELS



ENGELS



FORTNUM & MASON



20 FENCHURCH STREET



ST PAUL'S CATHEDRAL



THE GHERKIN, 30 ST MARY'S AXE



LEADENHALL MARKET

You can't say that the City is short on great things to do. There are incredible rooftop bars like Savage Garden and Sabine, whilst The Royal Exchange offers a haven of high end concept dining, including the British classic Fortnum and Mason and 1920's Berlin-inspired Engels. It is also home to many luxury retailers such as Hermes, Tiffany & Co and Mont Blanc.



THE HERMÈS BIRKIN BAG IS AN ICONIC DESIGN NAMED AFTER LEGENDARY LONDONER JANE BIRKIN



SAVAGE GARDEN ROOFTOP BAR  
City of London



THE CITY OF LONDON MEANS BUSINESS WITH ITS UNIQUE BUILDINGS HOUSING SOME OF THE WORLDS MOST INFLUENTIAL COMPANIES. THE COMMUTE TO THE CITY FROM LONDON DOCK COULDN'T BE EASIER WHETHER YOU WALK, GET THE TUBE FROM TOWER HILL OR THE BUS FROM RIGHT OUTSIDE YOUR DOOR.



2 MINS



DLR

to Bank  
from Shadwell

3 MINS



TUBE

to Cannon Street  
from Tower Hill

10 MINS



BUS

to Bishopsgate  
from London Dock

21 MINS

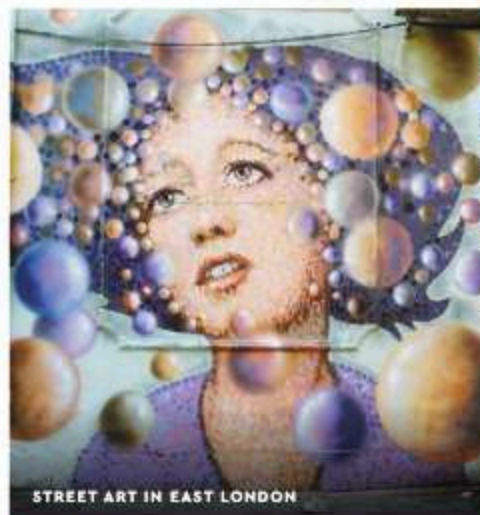


WALK

to The Leadenhall Building  
from London Dock



# HEAD NORTH FOR TREND-SETTERS & THE ART SCENE



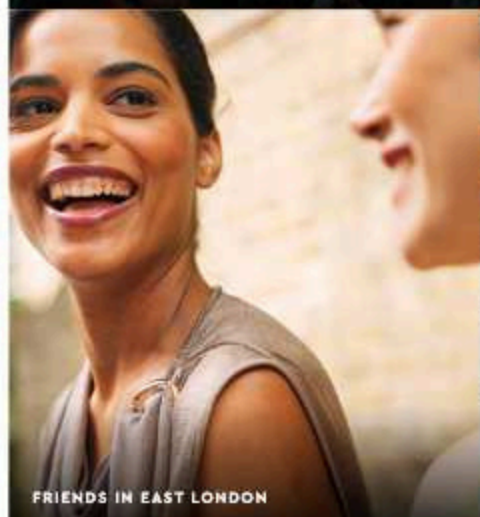
STREET ART IN EAST LONDON



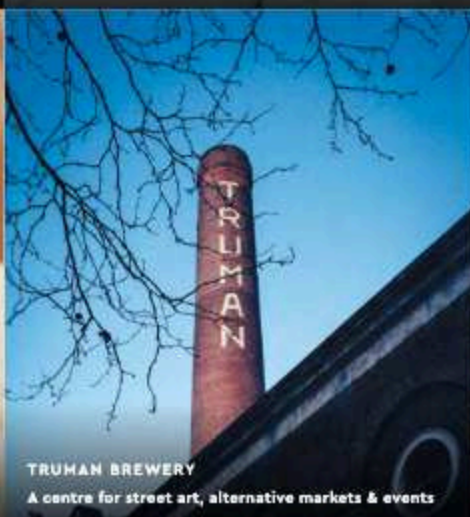
WHITECHAPEL STATION



ALL POINTS EAST  
One of the many festivals hosted in Victoria Park, Hackney



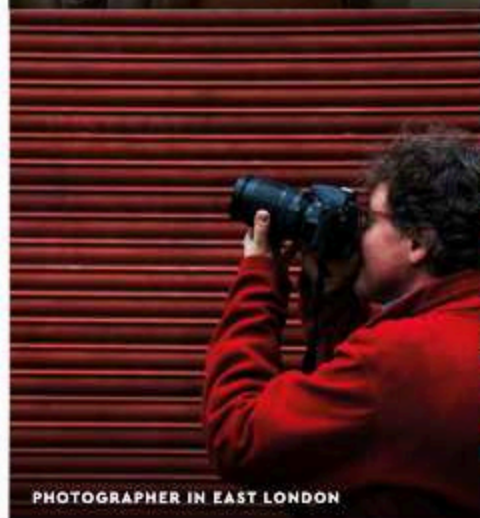
FRIENDS IN EAST LONDON



TRUMAN BREWERY  
A centre for street art, alternative markets & events



THE PRINCESS OF SHOREDITCH  
Enjoy top quality pub fare in East London



PHOTOGRAPHER IN EAST LONDON



STREET ART IN EAST LONDON



THE FAMOUS BRICK LANE BEIGEL SHOP  
A London staple serving delicious bagels



KAWS, FAMOUS STREET ARTIST THAT IS KNOWN FOR HIS CONTEMPORARY MODELS.



THE OLD & THE NEW  
Victorian terraces sit beside modern architecture

North of London Dock lies Shoreditch, Hoxton and many of the haunts of the creative folk. From the hottest bars to street art galleries and the bagel shops of the old East End there is always something surprising around the corner that only the most discerning cool-hunters know about.

Shoreditch is the spot for dining in East London. No longer just about pie and jellied eels, there are amazing baltis and bagels on Brick Lane and gastropubs aplenty.







LONDON DOCK

# HEAD EAST FOR NEW LONDON COOL & LUX LEISURE

**CANARY WHARF LONDON UNDERGROUND STATION**  
The impressive and memorable escalators at Canary Wharf are designed by Foster & Partners Architects



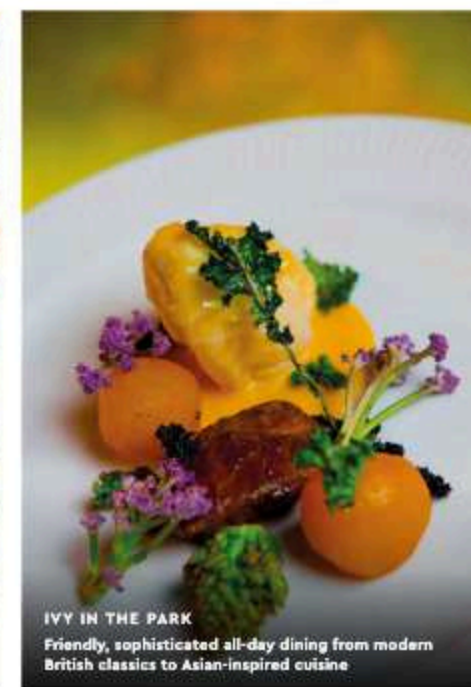
**SIX PUBLIC CLOCKS BY KONSTANTIN GRČIČ**  
Based on the iconic Swiss railway clock but here each of the 12 faces shows a single and different numeral

Canary Wharf is the new kid on the block when it comes to London hang outs, but it is now far from just the business district it started out as. Home to impressive architecture, chic waterside restaurants, luxury shopping malls and constantly changing art installations, it adds a fresh flavour to historic London.

It has also become the place to do something different in London, with unique opportunities for activities including open water swimming, kayaking, mini golf, and an outdoor amphitheatre.



**CROSSRAIL PLACE ROOF GARDEN**  
One of London's largest roof gardens with exotic plants, benches nestled in hidden pathways and an amphitheatre



**IVY IN THE PARK**  
Friendly, sophisticated all-day dining from modern British classics to Asian-inspired cuisine



**NO.5 MACKENZIE WALK**  
Modern bar & restaurant with stunning waterfront bar & terrace



**KAYAKING, ROYAL DOCKS**  
There are several water sports on offer throughout Canary Wharf from sailing to swimming

LONDON DOCK





# HEAD SOUTH FOR GOURMANDS & GOOD TIMES

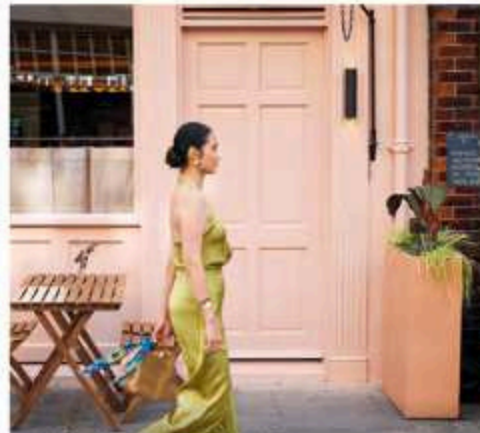
Just a short walk over the river, London Bridge and Bermondsey offer a plethora of dining establishments. Borough Market plays host to everything from olive stands and fresh oysters to the finest of wines. Michelin starred Trivet, fine dining hangout Restaurant Story, Angela Hartnett's Café Murano and the numerous concepts of Jose Pizarro make this area one of the capitals culinary hot spots.



A LONDON STAPLE OF OLD, NOW A LUXURY DINING DELICACY, THERE ARE FIVE OYSTER BARS IN BOROUGH MARKET ALONE!

"MY PERFECT WEEKEND  
WOULD START WITH  
DINNER ON FRIDAY,  
THEN HAVING A  
DELICIOUS BREAKFAST  
AT BOROUGH MARKET  
ON SATURDAY"

London Dock Resident



**LOLO, ALL DAY RESTAURANT**  
One of the famed José Pizarro's dining experiences on Bermondsey Street



**THE QUEEN'S WALK**  
With views of the city & HMS Belfast, this is an idyllic place to wander.



**MORE LONDON & TOWER BRIDGE**  
Food, culture and programmed events enliven the riverbank at More London



**FISH! AT BOROUGH MARKET**  
The award-winning fish and chip shop



**BOROUGH MARKET**  
One of the largest and oldest food markets in London, dating back to the 12th century



**CHAPTER 72 BERMONDSEY STREET**  
Home to one of the best espresso martini's in London



**HIGH-END RESTAURANTS AT THE SHARD**  
Dine with exceptional views at Aqua Shard, Oblix, Hutong, Ting Restaurant & Lounge and Gong Bar



**HISTORIC WAREHOUSES**  
Historic warehouses converted into everything from galleries to apartments to restaurants



**COLOURFUL SIGHTS IN SOUTHWARK**



**JOSÉ, TAPAS RESTAURANT**  
One of the famed José Pizarro's dining experiences on Bermondsey Street



**MOROCCO BOUND**  
Catch live jazz or a book reading at local independent hang-out Morocco Bound



**RESTAURANTS ON STONEY STREET**  
Elegant dining at its best there are many delicious choices from Korean to Puglian restaurants







KINGS CROSS &  
ST. PANCRAS  
INTERNATIONAL

LIVERPOOL  
STREET

LONDON DOCK

WAPPING



# YOU'RE NEVER FAR FROM WHERE YOU NEED TO BE

THE SITE OF LONDON DOCK WAS ONCE A HUB CONNECTING LONDON TO THE WORLD.

Connections to and from London Dock make life simple. Travel all over the capital is easy and fast, whatever the means of transport.

- WALKING FROM LONDON DOCK
- CYCLING FROM LONDON DOCK
- UNDERGROUND FROM TOWER HILL
- DLR FROM SHADWELL



# WHERE AMBITION IS NURTURED AND GREATNESS IS HONED

LONDON DOCK IS PERFECTLY SITUATED FOR EASY ACCESS TO THE CAPITAL'S SCHOOLS, COLLEGES AND UNIVERSITIES. THESE WORLD RENOWNED SEATS OF LEARNING WHERE THE FUTURE OF THE ARTS, SCIENCE, TECHNOLOGY, MEDICINE AND BUSINESS IS BEING SHAPED.

The Royal College of Art, Imperial College, King's College London, University College London and the London School of Economics are among the world's most prestigious universities and colleges; all are based in London.



**LEARNING THE BUSINESS**  
London has some of the worlds top business schools



**A FINE SCIENCE**  
UCL comes in third after Oxbridge for the sciences



**RICH PEDIGREE**  
Over 70 Nobel Prize laureates have studied or worked at a London university



**A FLAIR FOR THE ARTS**  
Some of the greatest artists have studied in London, achieving in many fields, from fashion design to fine art

# NEXT STOP: SUCCESS

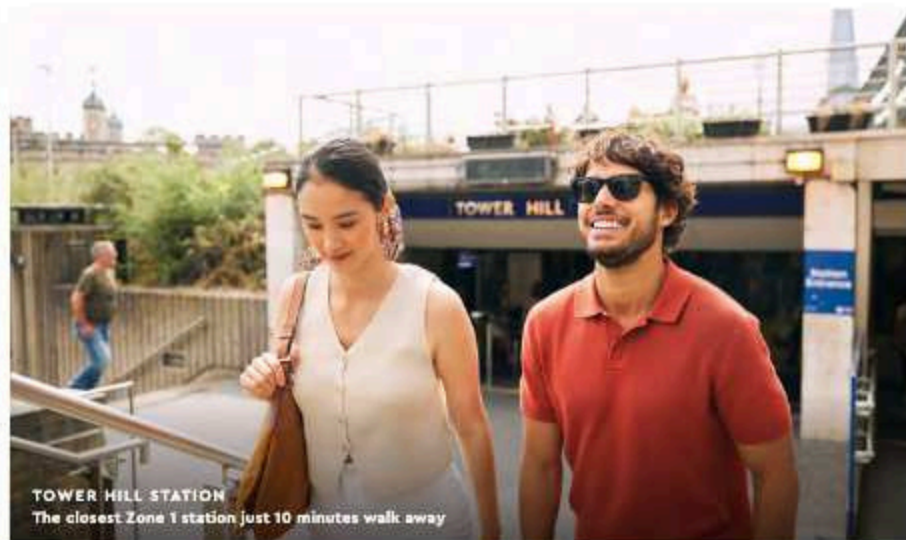
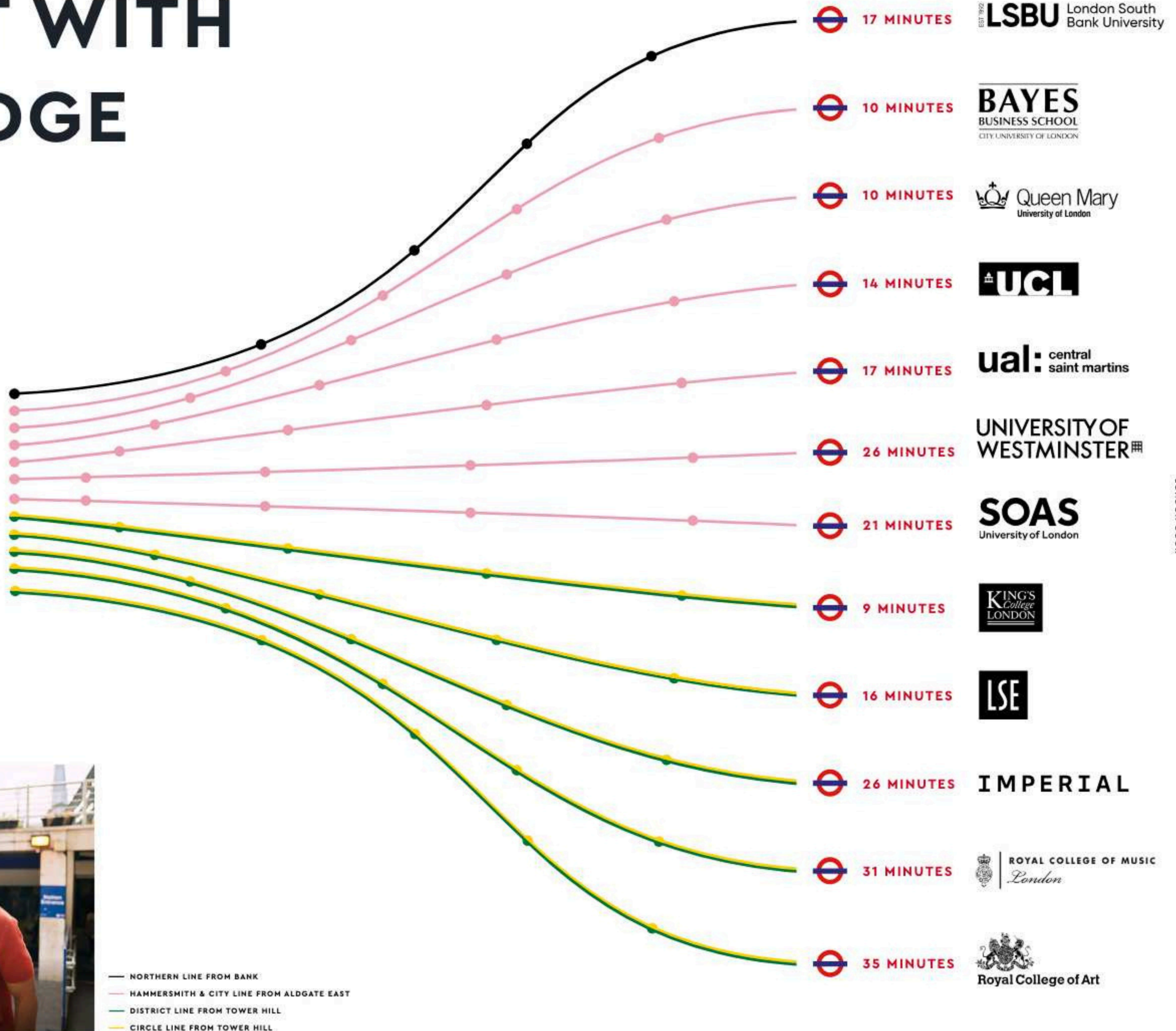
|                                       |                                   |  |                             |                                   |                                  |                                     |                                     |   |                                      |                                      |                                     |
|---------------------------------------|-----------------------------------|--|-----------------------------|-----------------------------------|----------------------------------|-------------------------------------|-------------------------------------|---|--------------------------------------|--------------------------------------|-------------------------------------|
| QUEEN MARY<br>UNIVERSITY<br>OF LONDON | LONDON<br>SOUTHBANK<br>UNIVERSITY | BAYES BUSINESS SCHOOL<br>CITY UNIVERSITY<br>LONDON | KING'S<br>COLLEGE<br>LONDON | LONDON<br>UNIVERSITY<br>OF ARTS   | LONDON<br>SCHOOL OF<br>ECONOMICS | UNIVERSITY<br>COLLEGE<br>LONDON     | SOAS<br>UNIVERSITY<br>OF LONDON     | UNIVERSITY<br>OF<br>WESTMINSTER             | IMPERIAL<br>COLLEGE<br>OF LONDON     | ROYAL<br>COLLEGE<br>OF MUSIC         | ROYAL<br>COLLEGE<br>OF ART          |
|                                       |                                   |  |                             |                                   |                                  |                                     |                                     |   |                                      |                                      |                                     |
| 2 STOPS                               | 3 STOPS                           | 2 STOPS  | 5 STOPS                     | 5 STOPS                           | 5 STOPS                          | 6 STOPS                             | 6 STOPS                             | 7 STOPS                                     | 11 STOPS                             | 11 STOPS                             | 12 STOPS                            |
| ALDGATE EAST<br>TO<br>STEPNEY GREEN   | BANK<br>TO<br>ELEPHANT & CASTLE   | ALDGATE EAST<br>TO<br>MOORGATE                     | TOWER HILL<br>TO<br>TEMPLE  | ALDGATE EAST<br>TO<br>KINGS CROSS | TOWER HILL<br>TO<br>TEMPLE       | ALDGATE EAST<br>TO<br>EUSTON SQUARE | ALDGATE EAST<br>TO<br>EUSTON SQUARE | ALDGATE EAST<br>TO<br>GREAT PORTLAND STREET | TOWER HILL<br>TO<br>SOUTH KENSINGTON | TOWER HILL<br>TO<br>SOUTH KENSINGTON | TOWER HILL<br>TO<br>GLOUCESTER ROAD |
|                                       |                                   |  |                             |                                   |                                  |                                     |                                     |   |                                      |                                      |                                     |
| 3.0 KMS / 1.9 MILES                   | 3.7 KMS / 2.3 MILES               | 4.5 KMS / 2.8 MILES                                | 3.7 KMS / 2.3 MILES         | 4.8 KMS / 3.0 MILES               | 4.0 KMS / 2.5 MILES              | 5.8 KMS / 3.6 MILES                 | 4.6 KMS / 2.9 MILES                 | 6.9 KMS / 4.3 MILES                         | 8.9 KMS / 5.5 MILES                  | 9.0 KMS / 5.6 MILES                  | 8.9 KMS / 5.5 MILES                 |



# CONNECT WITH KNOWLEDGE

GET TO LONDON'S GREAT KNOWLEDGE HUBS QUICKLY AND EASILY WITH CONNECTIONS BY TUBE.

**LONDON DOCK**  
WAPPING





"AT LONDON DOCK THERE IS  
A GREAT COMMUNITY AND THE  
LOOK OF THE DEVELOPMENT  
IS REALLY BEAUTIFUL. IT'S SO  
CALM AND PEACEFUL, LIKE A  
LITTLE OASIS."

Retailer at London Dock since 2021

## WAPPING SOURDOUGH





# WHAT YOU NEED & LOVE

**GAUGING SQUARE IS A HIVE OF ACTIVITY, WITH  
GYMS, SHOPS, CAFÉS, BARS & RESTAURANTS.**

## WAPPING SOURDOUGH

Pick up your delicious fresh loaf, a sweet treat or fabulous focaccia. Former suppliers to the London 2012 Olympics, this home bakery produces artisan sourdough goods, fresh every day.



## SLURP NOODLES

Enjoy hearty bowls of noodle soup, roasted meats and authentic Thai street food in a cool and casual setting. An epic choice whether you're spicing up your lunch break, impressing a date or treating yourself.



## CHAMPAGNE ROUTE

This sleek restaurant offers a touch of class. Enjoy refined international fare, masterfully paired with an extensive wine list. If you are feeling fizzy they also have a fabulous brunch menu.



## BENHAM AND REEVES

Benham and Reeves can help with all your property needs, from buying and selling to renting and letting.



## CLUB PILATES

The San Diego reformer pilates studios that are taking London by storm are now at London Dock. Offering state of the art equipment and instruction.



## CITY DOCK PHARMACY

Skilled medical pharmacists and experienced professionals delivering exceptional services catering to the needs of both private & NHS patients.



## SAINSBURY'S LOCAL

On the doorstep of London Dock is your local supermarket, great for all your essentials and day-to-day items.



## STARRY MART

A modern store specializing in Asian food, with food and beverages from China, Japan, Korea, Malaysia, Singapore, Indonesia, Thailand, and Vietnam.



## MOTHERDOUGH

Your local Neapolitan pizzeria puts the dolce vita into London Dock. Simple, authentic and complemented by natural wine, what more could you need?



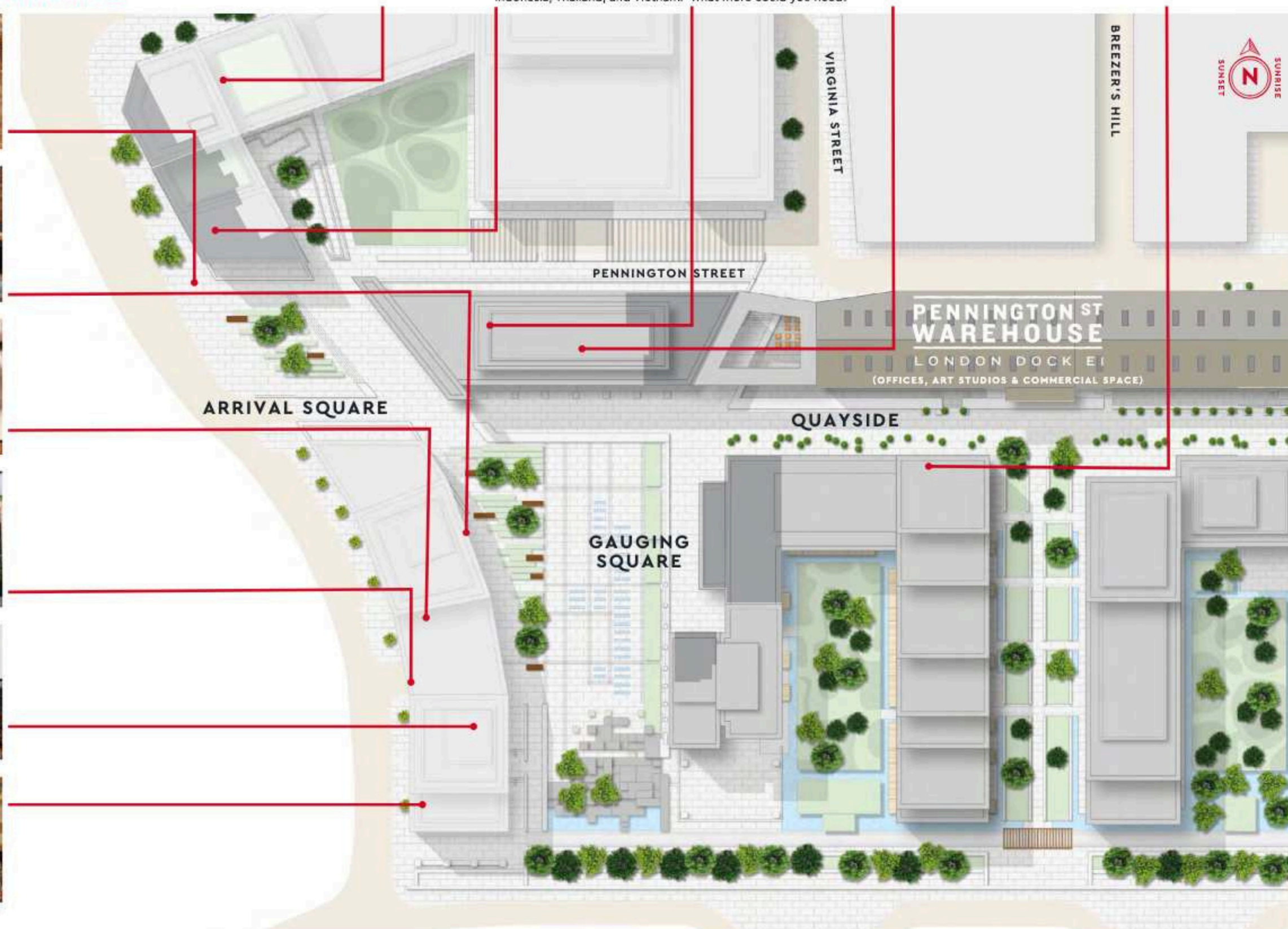
## URBAN BARISTAS

Aussies rule at Urban Baristas. Serving up that taste of Australian beach culture in a cup, coffee is at the heart of everything they do.

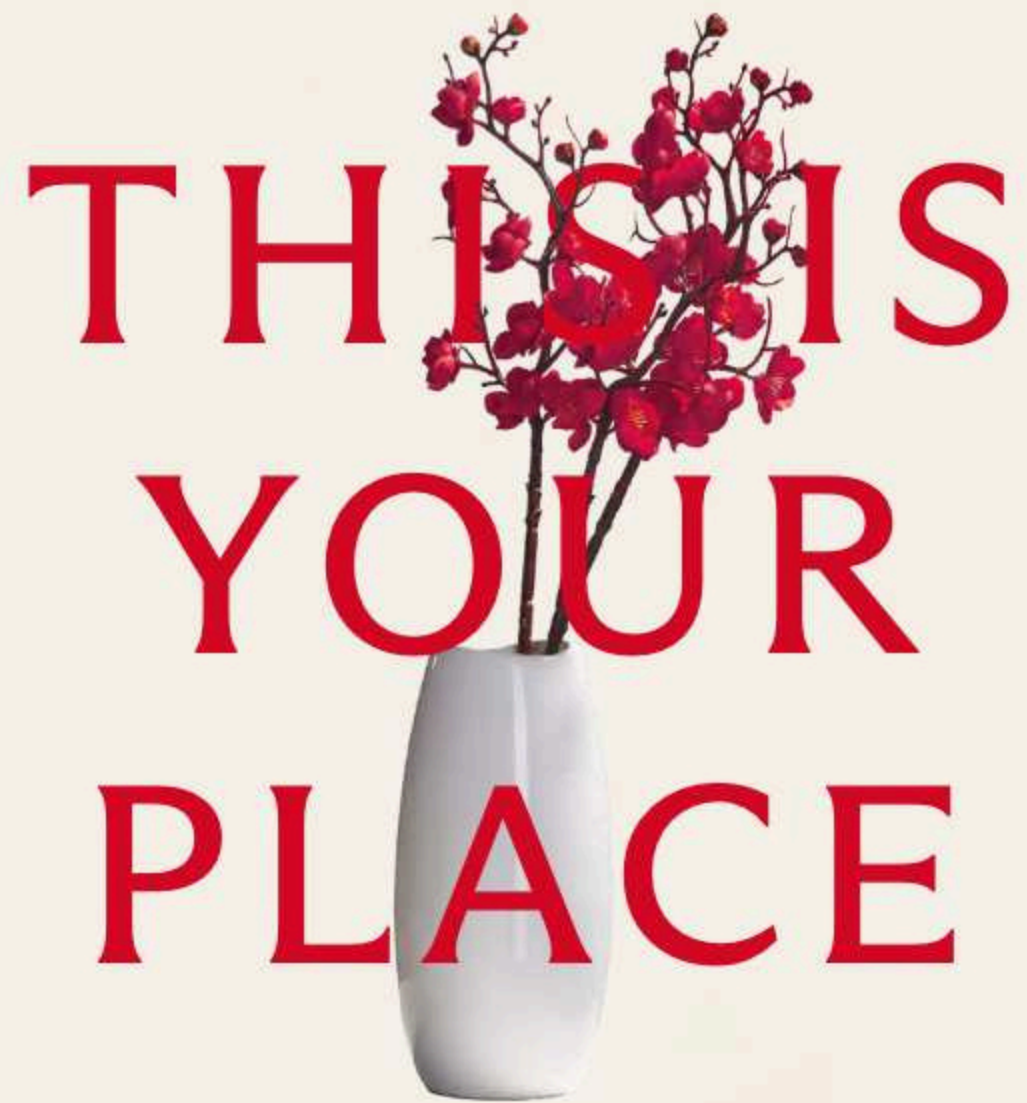


## E1 CROSSFIT

A CrossFit gym for everyone. If building confidence, having fun and getting fit is your goal - this one is for you!







CALL LONDON DOCK  
YOUR HOME





# LOVE LONDON LIVING



LONDON DOCK

57

COMPUTER-GENERATED IMAGE IS INDICATIVE ONLY

56



# LONDON DOCK



WAPPING

THE  
MAURETANIA  
LOUNGE

PENNINGTON  
QUAY WALK

JADE WHARF

**PENNINGTON ST  
WAREHOUSE**  
LONDON DOCK E1  
(OFFICES, ART STUDIOS  
& COMMERCIAL SPACE)

CANARY  
WHARF

BLOCK J  
(FUTURE PHASE)

THE  
CITY

EMERY  
WHARF

GAUGING  
SQUARE

COUNTER  
HOUSE

MERINO  
WHARF

SAFFRON  
WHARF

ARRIVAL  
SQUARE

ADMIRALTY  
HOUSE

ALEXANDER  
WHARF

24HR  
CONCIERGE

CASHMERE  
WHARF

WATER  
GARDEN

MERINO  
GARDENS

WATER  
GARDEN

BOXWOOD  
GARDENS

WATERSIDE  
PROMENADE

BLOCK H  
(FUTURE PHASE)

MARKET  
SQUARE

THE  
CLUB  
RESIDENTS  
FACILITIES

RIVER  
THAMES

ST KATHARINE  
DOCKS AND  
TOWER BRIDGE





COMPUTER-GENERATED IMAGE IS INDICATIVE ONLY

# TAKE TIME OUT FROM THE BUZZ- AN OASIS IN THE CITY

Landscaping plays an integral part in creating a uniquely peaceful feel, though the busy streets of the City are on your doorstep. Private and public gardens, water features and connecting pathways energise and encourage the community to come together, while providing space for peace and quiet in your own private sanctuary from London life.

**"THE LOCATION IS SO CENTRAL BUT IT'S LIKE A LITTLE OASIS HERE. IT'S SO CALM AND PEACEFUL AND IT LOOKS BEAUTIFUL."**

London Dock Resident



TAKING A STROLL DOWN THE WATERSIDE PROMENADE

LIFESTYLE IMAGE IS INDICATIVE ONLY





LONDON DOCK

LONDON DOCK



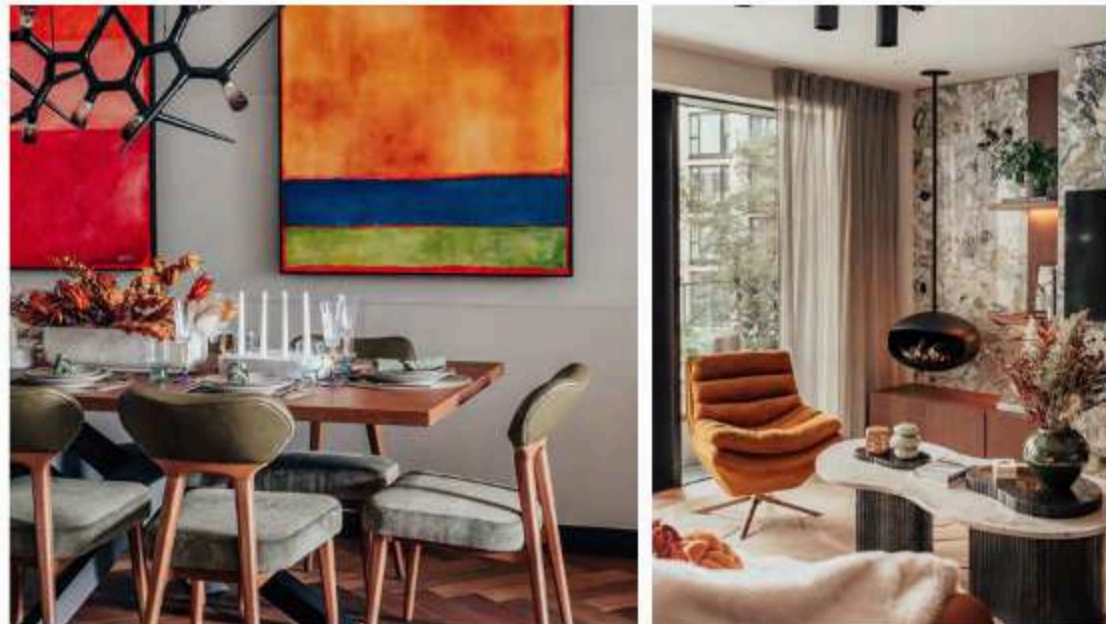
# LIFE-READY LUXURY, INSIDE & OUT

This exciting new neighbourhood of 2,038 high-quality homes is set in beautifully landscaped open spaces, designed for effortless and relaxed contemporary living.

The high quality materials and standard of finish make these a superb choice of home in an amazing location.

**"WE HAD ALWAYS REMARKED ON HOW BEAUTIFUL THE DEVELOPMENT LOOKED AND WERE REALLY IMPRESSED WITH BOTH THE SIZE AND THE SPECIFICATION OF THE APARTMENTS. WE COULDN'T WAIT TO MOVE IN."**

London Dock Resident





"THE BUILDINGS ARE VERY STRIKING AND MODERN AT LONDON DOCK. THE HOME WE LIVE IN IS VERY HIGH QUALITY, AND WE REALLY LOVE OUR TERRACE"

London Dock Resident



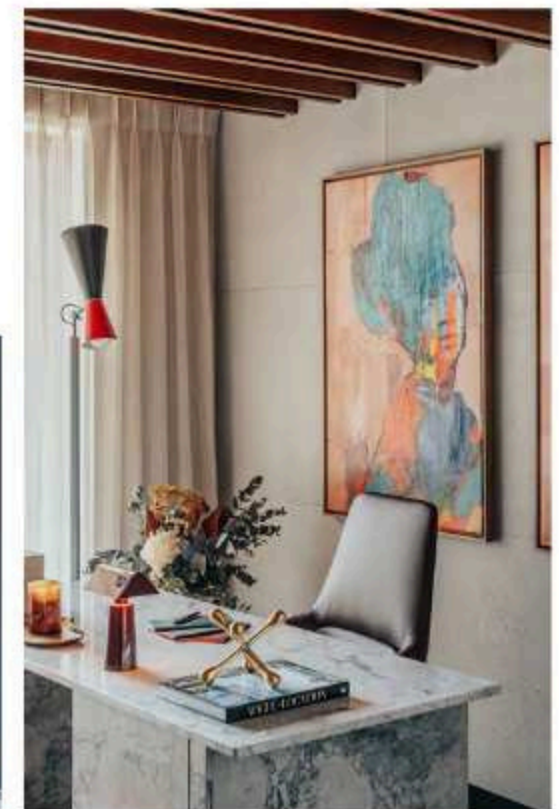
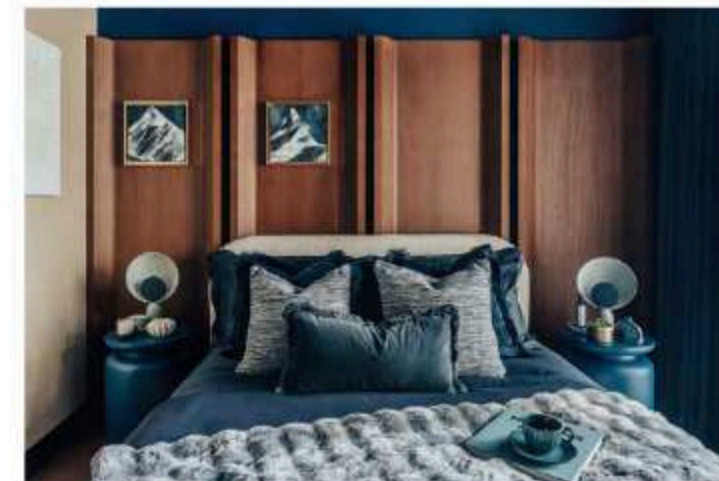


# A PLACE TO STAY, THE LONDON DOCK WAY

WHETHER YOU DREAM OF A BREATHTAKING PANORAMIC BALCONY, THE PERFECT KITCHEN TO HOST, OR A BEDROOM TO TAKE YOU AWAY FROM THE EVERY DAY, THERE ARE HOMES AT LONDON DOCK TO FIT YOUR EVERY NEED.

Designed with the resident in mind with quality always at the forefront, the materials used have been sourced with both aesthetic and practical considerations to create truly life-ready luxury living.

Jade Wharf is the latest addition to the London Dock neighbourhood. Designed for the taste maker, with exquisitely appointed manhattan, one, two and three bedroom apartments.





London Dock has been designed for those who seek and recognise high quality luxury living.

Every detail that adorns the interiors has been carefully and deliberately selected. From the location itself, the landscaped gardens and exemplar residents facilities, down to the choice of fixtures and fittings.

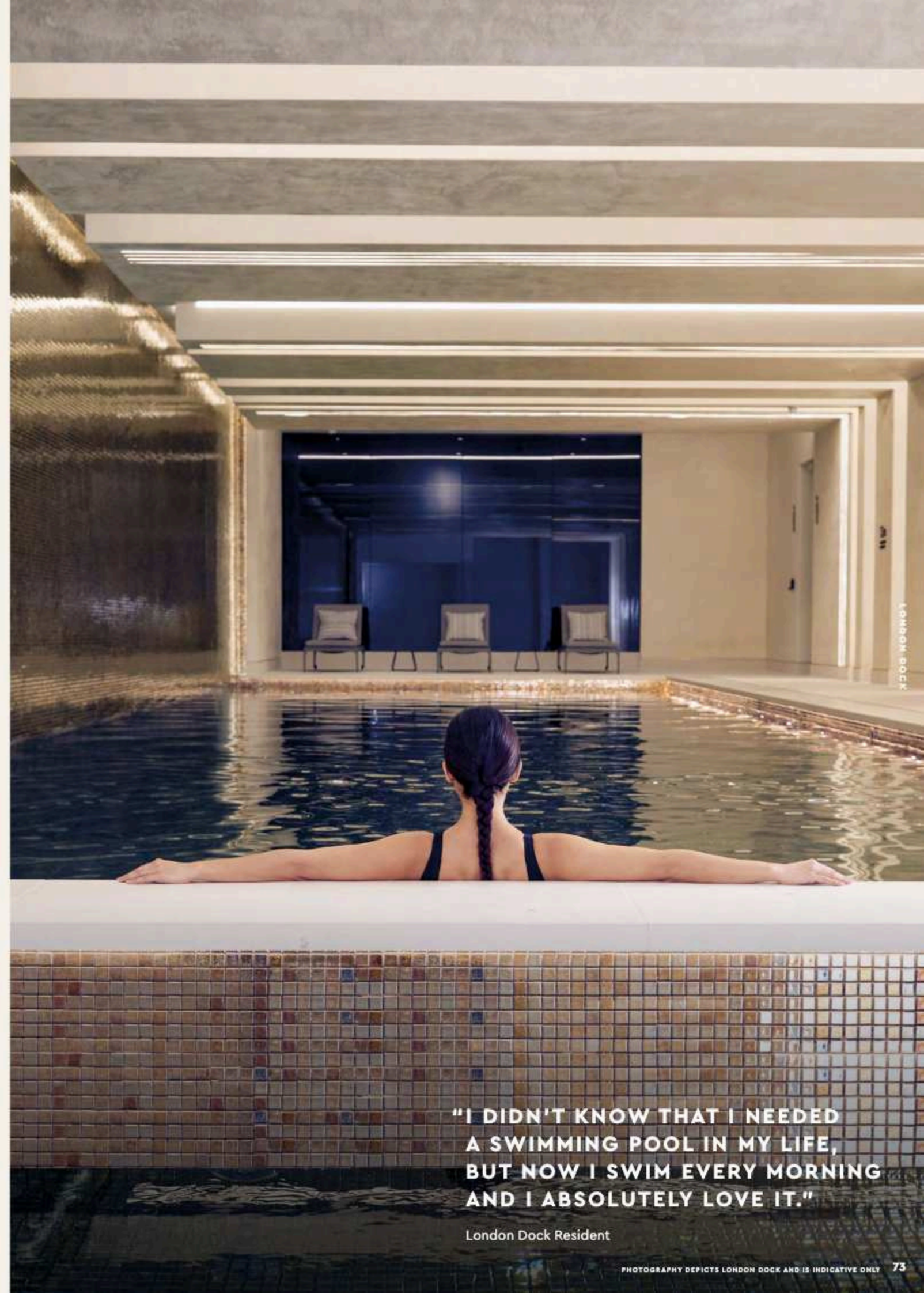
This is contemporary urban living at its very best.





# ALL ABOUT YOU

FACILITIES AT  
YOUR FINGERTIPS



"I DIDN'T KNOW THAT I NEEDED  
A SWIMMING POOL IN MY LIFE,  
BUT NOW I SWIM EVERY MORNING  
AND I ABSOLUTELY LOVE IT."

London Dock Resident



# EVERYTHING TAKEN CARE OF AT THE CLUB

THE CLUB, PART OF  
LONDON DOCK'S HOTEL  
STYLE FACILITIES  
BRING THE COMMUNITY  
TOGETHER THROUGH  
COMMUNAL SPACES AND  
SHARED LEISURE TIME.

## STAYING FIT

Residents have use of a fully-equipped gymnasium, squash court, swimming pool and virtual golf suite.

## LOOKING AFTER YOU, 24HR CONCIERGE

Whether it's collecting a package or ordering a taxi, the London Dock concierge is available any time, day or night.

## FOR THE MOVIE LOVERS

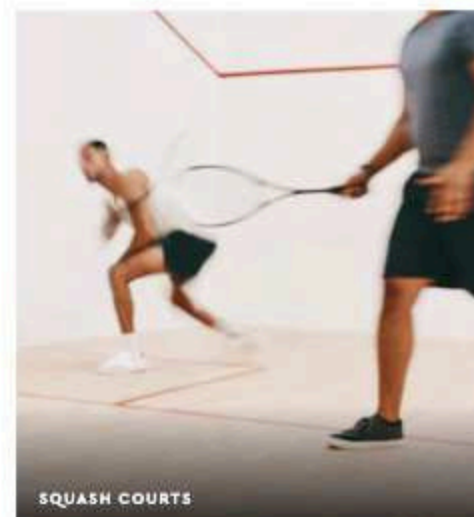
A state-of-the-art private screening room with surround sound is available exclusively to residents.

## TREAT YOURSELF

The jacuzzi, sauna, steam and treatment rooms are an essential for those who love to look after themselves. Residents wellbeing is always taken care of.

## TAKE TIME FOR YOU

The Residents' Lounge provides an informal atmosphere where residents can work or relax and unwind from the stress of the day.



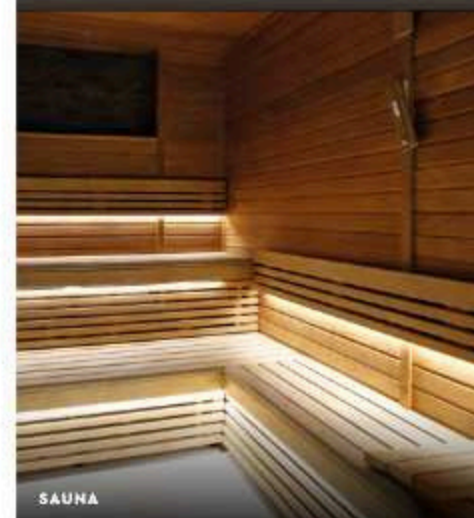
SQUASH COURTS



THE CLUB RECEPTION



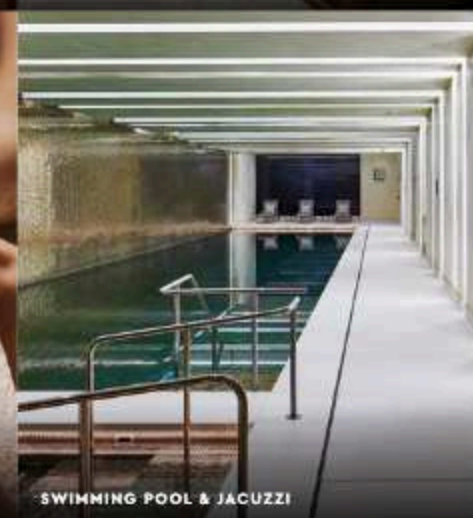
24HR CONCIERGE



SAUNA



TREATMENT ROOM



SWIMMING POOL & JACUZZI



CINEMA ROOM



GOLF SIMULATOR



GYM

# THE CLUB



# THIS IS LIVING REDEFINED

OUTSTANDING FACILITIES ENHANCE THE  
WELLBEING OF LONDON DOCK RESIDENTS.  
THE LATEST ADDITIONS TAKE LUXURY  
LIVING TO THE NEXT LEVEL.

LONDON DOCK

77

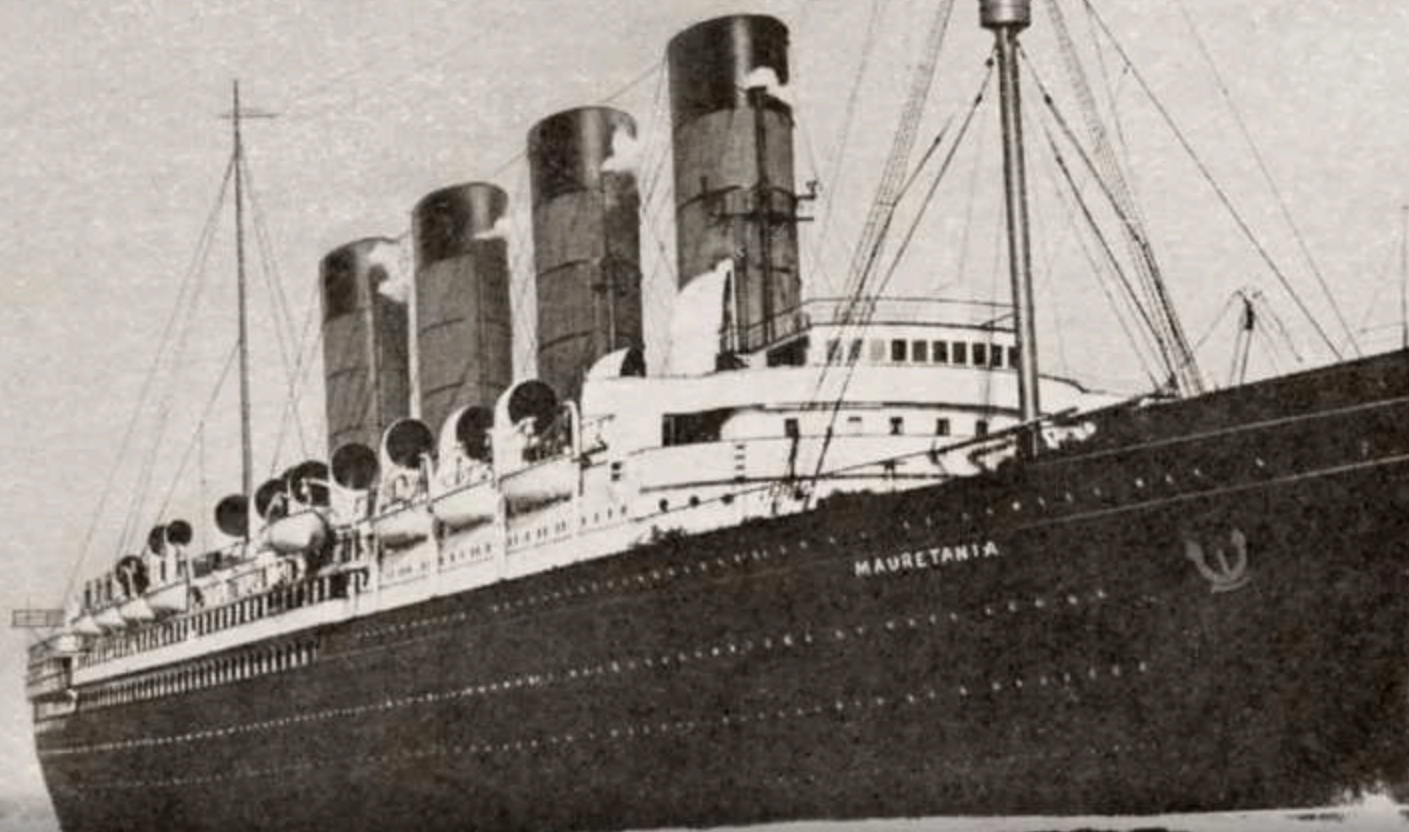
LIFESTYLE IMAGE IS INDICATIVE ONLY

LONDON DOCK

76



# THE NEW GOLDEN AGE OF LUXURY HAS ARRIVED



**RMS MAURETANIA**  
One of the most luxurious cruise liners of its day

IMAGE SOURCE: HILARY MORGAN / ALAMY STOCK PHOTO

**ENTER INTO THE GLAMOROUS WORLD OF THE GOLDEN AGE OF TRAVEL WITH THE LATEST ADDITIONS TO THE FACILITIES AT LONDON DOCK.**

Inspired by the luxury of cruise liners in the early 20th century, the facilities now have even more to offer. Once, people travelled in style, now you can experience elegance and sophistication every day on your doorstep.

The spaces take the inspiration of this theme, including an impressive Grand Staircase, Oceanic Lounge with spectacular double height aquarium, a verdant Palm Room to relax in and an Observation Lounge where you can sit back, relax and enjoy a drink.

## THE MAURETANIA LOUNGE



### THE GRAND STAIRCASE & OCEANIC LOUNGE

Make a grand entrance into a stunning lounge, with decor that brings the ocean into the heart of the city.



# WELCOME TO YOUR WORLD

IN THE SUMPTUOUS INTERIORS  
OF THE MAURETANIA LOUNGE,  
THE LUXURY OF THE CRUISE  
LINERS OF THE PAST IS REVIVED  
AND RENEWED.

The Mauretania Lounge is a contemporary take on the world famous passenger liner that is its namesake.

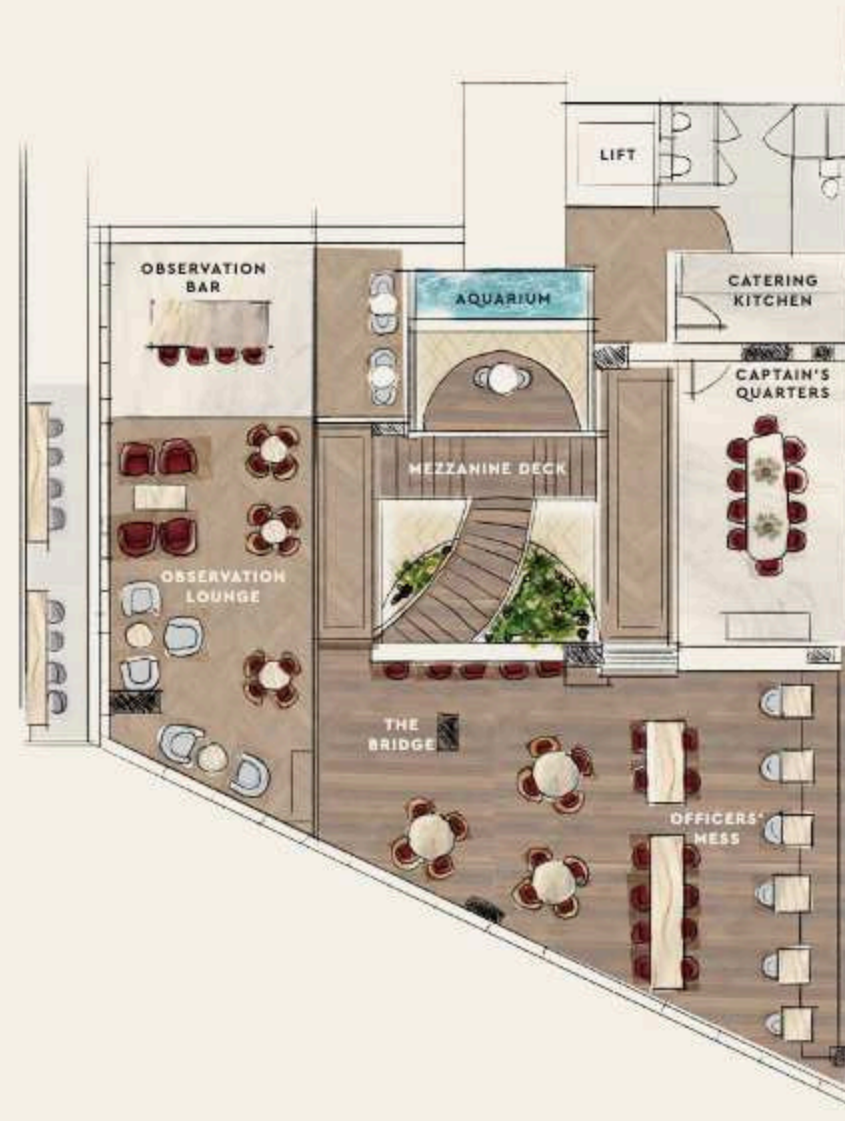
The lounge is split into distinct areas such as The Oceanic Lounge, The Bridge, The Observation Bar, The Captain's Quarters, each of which evokes a different experience of the Golden Age of Travel.



COMPUTER-GENERATED IMAGE IS INDICATIVE ONLY



## GROUND FLOOR



## FIRST FLOOR





## THE OBSERVATION DECK

Look out over the dancing fountains of Gauging Square. A place to meet with neighbours and friends, socialise and take in the ambience.

"THANKS TO THE RESIDENTS' FACILITIES, THERE ARE OPPORTUNITIES TO GET TO KNOW YOUR NEIGHBOURS AND BUILD LONG LASTING FRIENDSHIPS. IT COMPLETELY CHANGED MY PERSPECTIVE ON LONDON LIVING."

London Dock Resident

## THE MAURETANIA LOUNGE

LONDON DOCK

83

COMPUTER-GENERATED IMAGES OF THE MAURETANIA LOUNGE ARE INDICATIVE ONLY AND SUBJECT TO PLANNING.

82





#### CAPTAIN'S QUARTERS

Dine like the captain of your own private yacht. This private dining room, with its own catered kitchen, is perfect for decadent dinners with friends, neighbours or business associates alike.

## THE MAURETANIA LOUNGE



The Palm Room is just one of the new invigorating spaces, a fresh place to connect with friends. It is a conservatory, inspired by the great Victorian glasshouses, with a contemporary twist.



# THE MAURETANIA LOUNGE