

Middle Yard Oberman Road, London, NW10 1DT
£2,400 Per month
EPC Rating: B Council Tax Band: D



Nestled in the desirable area of Middle Yard on Oberman Road, this modern apartment presents a rare opportunity for those seeking a stylish and contemporary living space. Built in 2022, the property boasts a generous 732 square feet of well-designed accommodation, making it ideal for both individuals and small families.

The apartment features two spacious bedrooms, providing ample room for relaxation and privacy. The two bathrooms are thoughtfully designed, ensuring convenience and comfort for all residents. The reception room serves as a welcoming space, perfect for entertaining guests or enjoying quiet evenings at home.

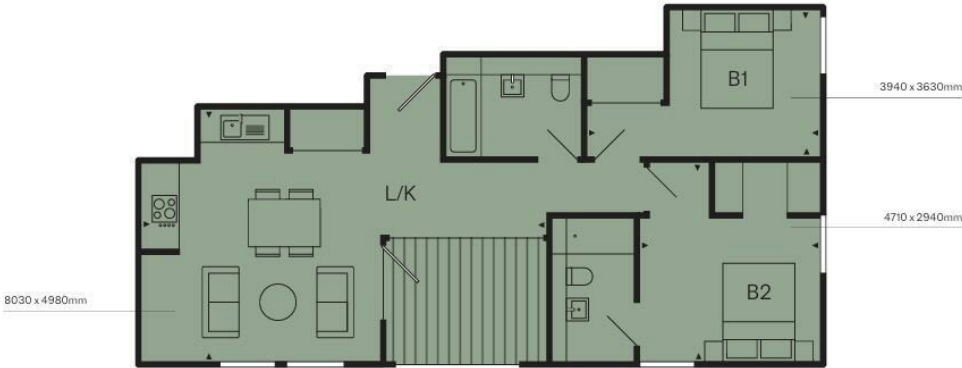
With its modern finishes and attention to detail, this apartment is a true gem in the heart of NW10. The location offers excellent transport links and local amenities, making it a practical choice for those who value both comfort and accessibility.

This property is not just a home; it is an opportunity to embrace a vibrant lifestyle in a thriving community. Do not miss your chance to make this exceptional apartment your own.



Percy House,
33-34 Gresse Street,
London
W1T 1QU
020 7043 8888
Lettings@stone.london

C6004. (2 BED)
7 BALCONY AREA SQ MI
68 APARTMENT AREA SQ MI



Energy Efficiency Rating		
	Current	Potential
Very energy efficient - lower running costs		
(92 plus) A	85	
(81-91) B		
(69-80) C		
(55-68) D		
(39-54) E		
(21-38) F		
(1-20) G		
Not energy efficient - higher running costs		
England & Wales		EU Directive 2002/91/EC 