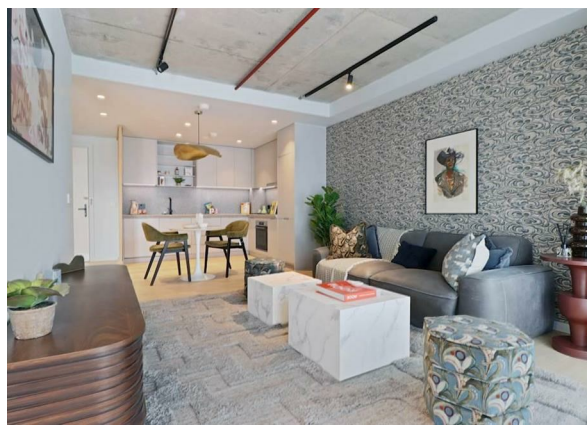
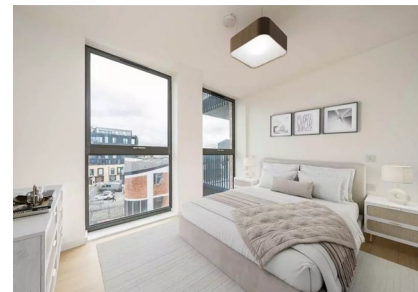


The Smokehaus Bayford Street, London, E8 3SF

£3,600

EPC Rating: Council Tax Band: C

STONE



Nestled in the vibrant area of Bayford Street, London, this exquisite new build flat offers a modern living experience in a prime location. Spanning an impressive 837 square feet, the property boasts a creatively styled layout that maximises both space and functionality.

Upon entering, you are welcomed into a bright and airy reception room, which serves as the heart of the home. This inviting space features access doors leading to a charming balcony, perfect for enjoying a morning coffee or unwinding in the evening. The flat comprises two well-proportioned bedrooms, each designed with comfort in mind. The second bedroom also benefits from direct access to the balcony, enhancing the sense of openness and connection to the outdoors.

With two stylish bathrooms, this property ensures convenience for both residents and guests alike. The contemporary design and high-quality finishes throughout reflect the latest in modern living, making it an ideal choice for those seeking a sophisticated urban lifestyle.

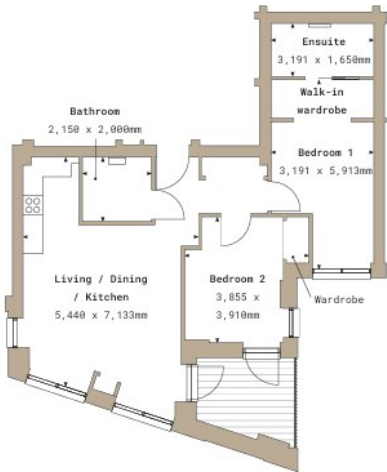


Percy House,
33-34 Gresse Street,
London
W1T 1QU
020 7043 8888
Lettings@stone.london

1.7

SMOKEHAUS

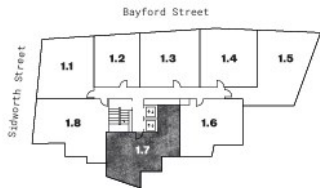
LONDON FIELDS, E8



Total area 837.4 sq.ft 77.8 sq.m

Floor 2

- 2 Bedrooms
- 1 Reception
- 1 Bath/Shower
- 1 Shower



Energy Efficiency Rating		
	Current	Potential
Very energy efficient - lower running costs		
(92 plus) A		
(81-91) B		
(69-80) C		
(55-68) D		
(39-54) E		
(21-38) F		
(1-20) G		
Not energy efficient - higher running costs		
England & Wales		EU Directive 2002/91/EC