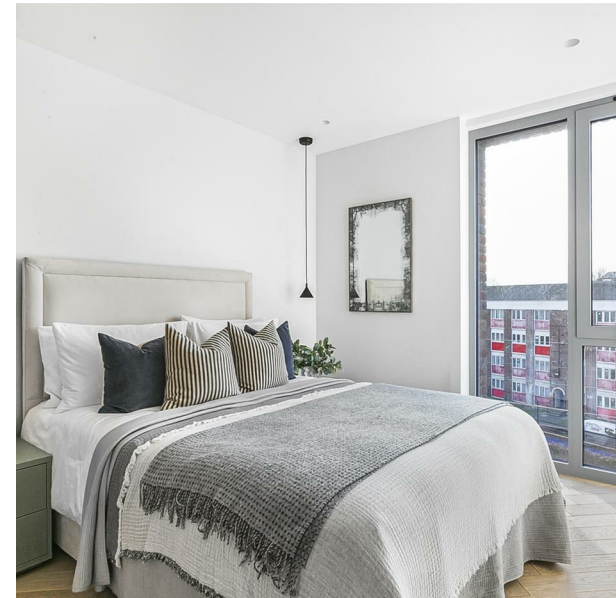


Parkhaus Mapple Path, London, E5 8FD
£2,500 Per month
EPC Rating: Council Tax Band: C

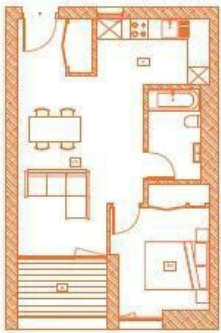


Welcome to this stunning one-bedroom apartment located on Maple Path in the vibrant heart of London. Built in 2022, this modern residence spans an impressive 538 square feet and is designed with a focus on community living, making it an ideal choice for those seeking both comfort and convenience.

As you step inside, you will be greeted by an abundance of natural light that fills the space, creating a warm and inviting atmosphere. The apartment is thoughtfully soundproofed, ensuring a peaceful retreat from the bustling city outside. The well-appointed bedroom and stylish bathroom provide all the essentials for modern living.

This desirable development boasts a range of wellness amenities that cater to your lifestyle needs. Enjoy access to a fully equipped gym, a dedicated pilates studio, and relaxing salons. For your convenience, there are delightful cafes and a grocery store within the complex, making daily errands a breeze. The rooftop pool and edible gardens offer a unique opportunity to unwind and connect with nature right at your doorstep.

BLOCK D1 - 4 MAPPLE PATH
TYPE 14 - 1BED



FLAT 7, 18, 19, 20, 26, 27, 28, 34, 35, 36, 42, 43, 44, 61, 62, 63

LIVING & DINING	5.6m x 4.1m	18'.4" x 13'.5"
KITCHEN	3.5m x 2.1m	11'.6" x 6'.11"
BEDROOM	3.4m x 3.1m	11'.1" x 10'.2"
BATHROOM	1.7m x 2.8m	5'.7" x 9'.2"
BALCONY	2.7m x 1.9m	8'.10" x 6'.3"
TOTAL	50 SQM	538 SQFT



STONE

Percy House,
33-34 Gresse Street,
London
W1T 1QU
020 7043 8888
Lettings@stone.london

Energy Efficiency Rating		
	Current	Potential
Very energy efficient - lower running costs		
(92 plus) A		
(81-91) B		
(69-80) C		
(55-68) D		
(39-54) E		
(21-38) F		
(1-20) G		
Not energy efficient - higher running costs		
England & Wales	EU Directive 2002/91/EC	