

180A York Way, London, N1 0FP
£4,775 Per month
EPC Rating: Council Tax Band: D



Nestled in the vibrant heart of London, this contemporary flat on York Way offers an exceptional living experience within a highly sought-after Build to Rent (BTR) development. Completed in 2023, this immaculate property is thoughtfully furnished, ensuring a seamless transition for new residents.

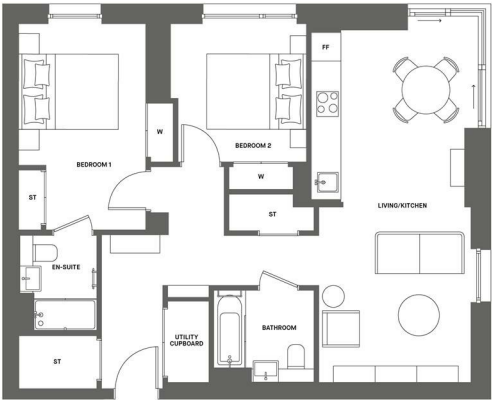
The development boasts an impressive array of amenities designed to enhance your lifestyle. Residents can enjoy a state-of-the-art cinema, a fully equipped gym, and a variety of studio classes, catering to both fitness enthusiasts and those seeking leisure activities. For those who require a quiet space to work or study, the dedicated study areas provide an ideal environment, while the beautifully landscaped courtyard offers a serene escape from the bustling city.

With a 24-hour concierge service, you can rest assured that your needs are met at any hour. The communal kitchen and multiple gathering areas foster a sense of community, making it easy to connect with fellow residents. Additionally, high-speed Wi-Fi is included, ensuring you stay connected whether for work or leisure.

2 BED

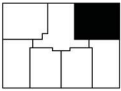
AUTHOR BUILDING
APARTMENT 308
FLOOR 3

AUTHOR
KING'S CROSS



NIA	77.2 sq m	831.3 sq ft
LIVING/KITCHEN	3.33 x 7.71m	10'11" x 25'4"
BEDROOM 1	2.78 x 4.52m	9'1" x 14'10"
BEDROOM 2	2.97 x 3.02m	9'9" x 9'11"

W WARDROBE ST STORAGE FF FRIDGE FREEZER
Floorplans are for approximate measurements only. Dimensions are
indicative of the maximum length and width. Furniture shown is included.



Percy House,
33-34 Gresse Street,
London
W1T 1QU
020 7043 8888
Lettings@stone.london

Energy Efficiency Rating			
		Current	Potential
Very energy efficient - lower running costs			
(92 plus) A			
(81-91) B			
(69-80) C			
(55-68) D			
(39-54) E			
(21-38) F			
(1-20) G			
Not energy efficient - higher running costs			
England & Wales		EU Directive 2002/91/EC	