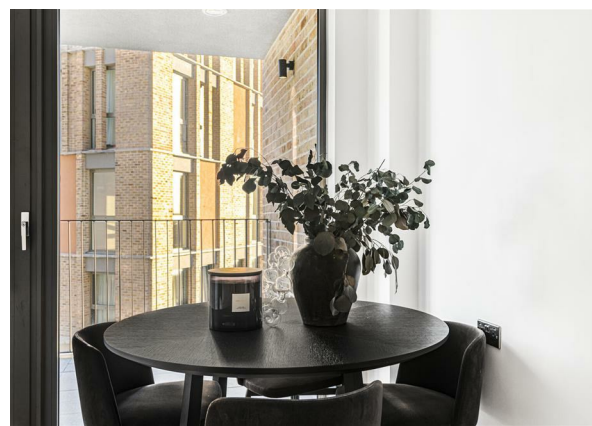
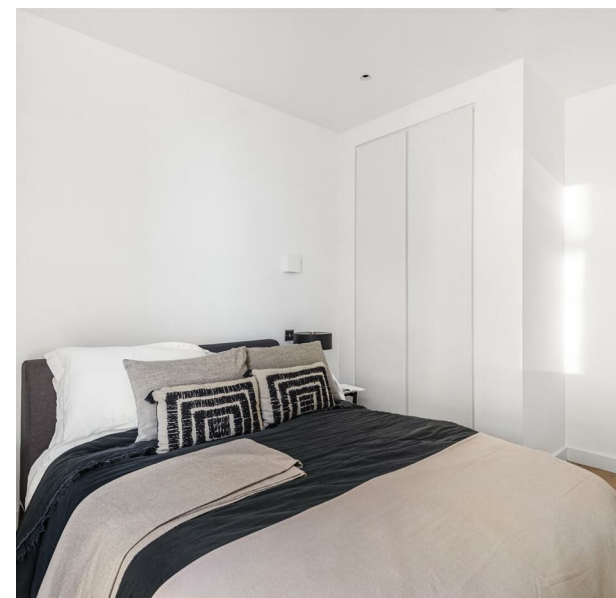


Middle Yard 5 Oberman Road, London, NW10 1DT
£1,935 Per month
EPC Rating: B Council Tax Band: D



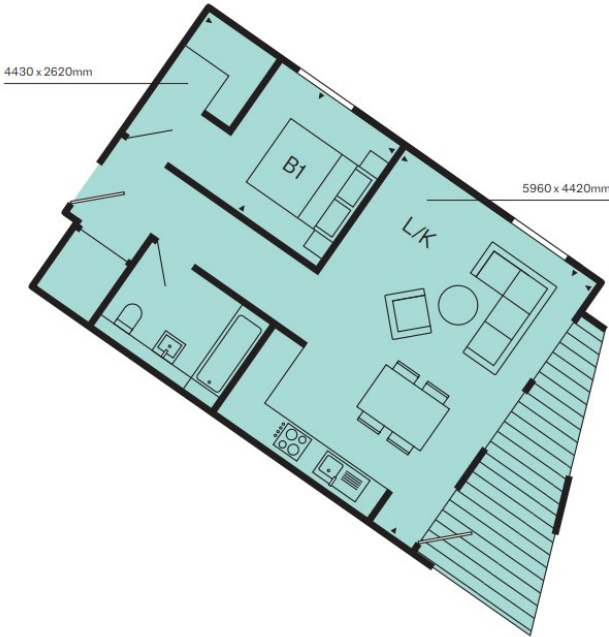
Only 2 apartments left! Hurry before you miss your chance!!

Please Note: The photos shown are of a similar unit within the development and are intended to illustrate the overall style and finish. Layout and features may vary. For accurate details, please refer to the floorplans attached.

Nestled in the vibrant and creative district of London, 5 Oberman Road presents a unique opportunity for those seeking a modern home in a lively community. This charming apartment, built in 2022, offers a fresh and contemporary living space that is perfect for individuals or couples.

The property features a well-appointed reception room that serves as an inviting space for relaxation and entertainment. The bedroom is designed to provide a peaceful retreat, ensuring a restful

D5003. (1 BED)
9 (BALCONY AREA SQ M)
52 (APARTMENT AREA SQ M)



1/7



Percy House,
33-34 Gresse Street,
London
W1T 1QU
020 7043 8888
Lettings@stone.london

Energy Efficiency Rating			
	Current	Potential	
Very energy efficient - lower running costs			
(92 plus) A	85		
(81-91) B			
(69-80) C			
(55-68) D			
(39-54) E			
(21-38) F			
(1-20) G			
Not energy efficient - higher running costs			
England & Wales			
EU Directive 2002/91/EC		