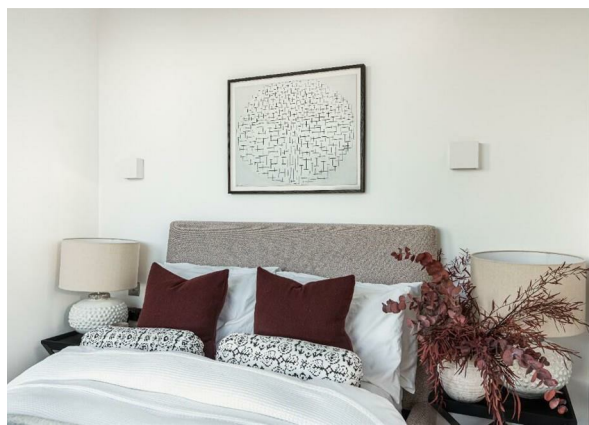
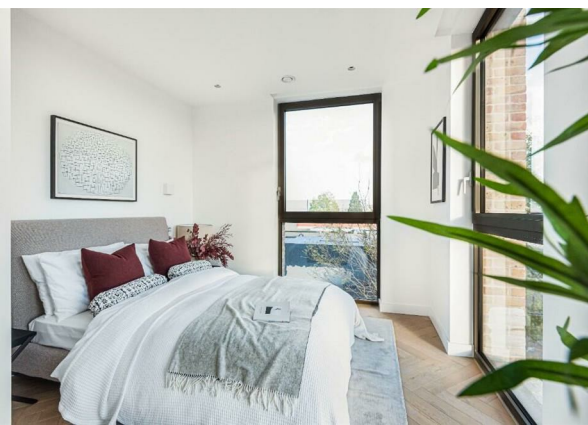
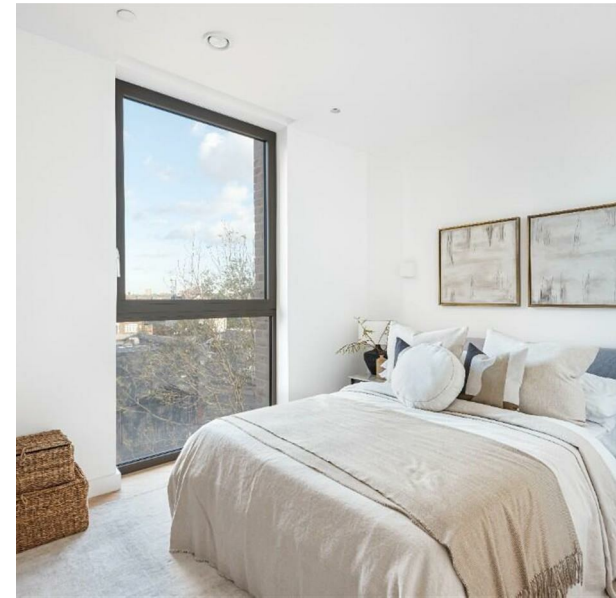


Middle Yard Oberman Road, London, NW10 1DT
£2,900 Per month
EPC Rating: B Council Tax Band: E



Only one 3-bedroom flat available at this price! Hurry, before you miss out!!

Please Note: The photos shown are of a similar unit within the development and are intended to illustrate the overall style and finish. Layout and features vary. For accurate details, please refer to the floorplans attached.

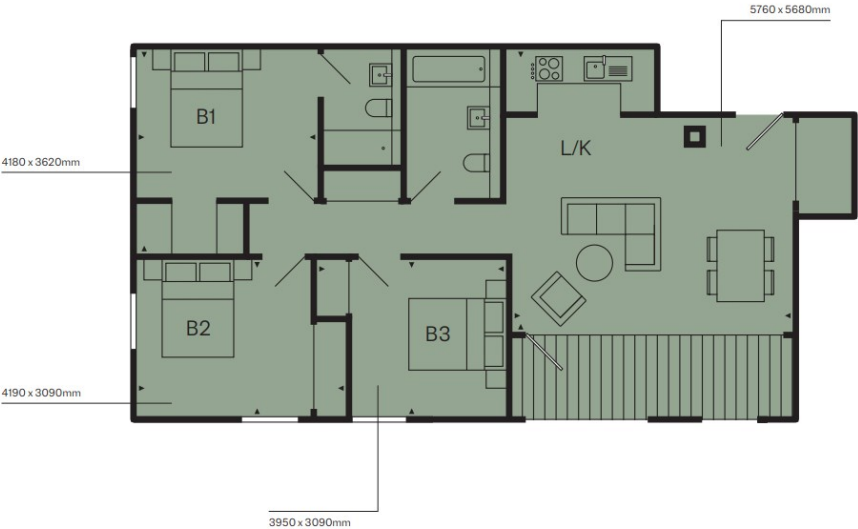
Welcome to Middle Yard, a prestigious development featuring 136 luxury residences across four beautifully designed buildings. Residents enjoy exclusive access to top-tier amenities, including an on-site gym and heated indoor and outdoor swimming pools.

As you enter this flat, you will be greeted by an inviting reception room that seamlessly flows into the rest of the home, creating a perfect environment for relaxation and entertaining. The flat



Percy House,
33-34 Gresse Street,
London
W1T 1QU
020 7043 8888
Lettings@stone.london

C6003. (3 BED)
7 (BALCONY AREA SQ M)
85 (APARTMENT AREA SQ M)



Energy Efficiency Rating		
	Current	Potential
Very energy efficient - lower running costs		
(92 plus) A	87	
(81-91) B		
(69-80) C		
(55-68) D		
(39-54) E		
(21-38) F		
(1-20) G		
Not energy efficient - higher running costs		
England & Wales		EU Directive 2002/91/EC 