

# Paul Bott & Co



- Victorian Raised Ground Floor Apartment
- Stylish Finish
- One Double Bedroom

## GFF, 13 Egremont Place, Brighton, BN2 0GA

Offers In Region Of £325,000

Offers In The Region of £325,000. Raised floor apartment situated moments away from Queens Park and Kemp Town Seafront. Fantastic condition with very neutral tasteful décor throughout. West facing patio, spacious living room, double bedroom, separate WC, fitted kitchen and bathroom. Long Lease. Perfect first time buy or investment due to the area and finish. Chain Free

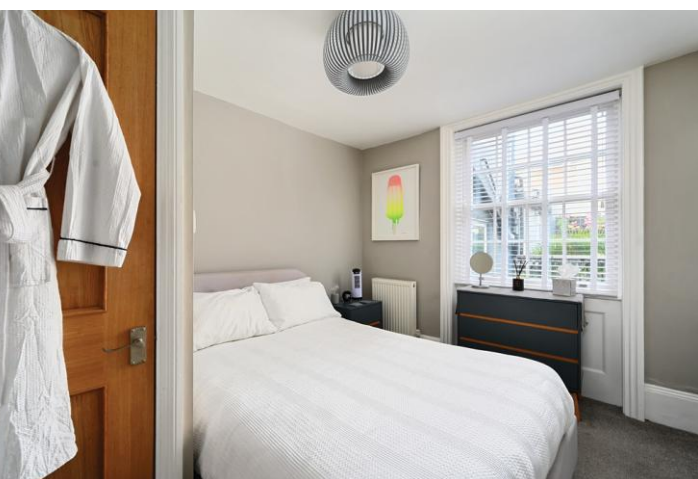


## Property Description

Offers In The Region of £325,000. Raised floor apartment situated moments away from Queens Park and Kemp Town Seafront. Fantastic condition with very neutral tasteful décor throughout. West facing patio, spacious living room, double bedroom, separate WC, fitted kitchen and bathroom. Long Lease. Perfect first time buy or investment due to the area and finish







## Floor Plan

Approx. 46.1 sq. metres (496.1 sq. feet)



Total area: approx. 46.1 sq. metres (496.1 sq. feet)

29 Upper St James Street,  
Brighton, East Sussex, BN2 1JN

[www.paulbottandcompany.co.uk](http://www.paulbottandcompany.co.uk)  
01273 605530  
[info@paulbottandcompany.co.uk](mailto:info@paulbottandcompany.co.uk)

Agents Note: Whilst every care has been taken to prepare these sales particulars, they are for guidance purposes only. All measurements are approximate are for general guidance purposes only and whilst every care has been taken to ensure their accuracy, they should not be relied upon and potential buyers are advised to recheck the measurements