

Paul Bott & Co



- Beautifully Presented Patio Apartment
- Two Outside Spaces
- Access To Sussex Square

Lower Ground Floor, 34 Arundel Place, Brighton, BN2 1GD

Offers In Region Of £350,000

Hidden Gem. Effortless in design and tastefully finished with such attention to detail. This spacious one bedroom apartment come to market offering: two outside spaces, access to the beautifully maintained Kemp Town Enclosure with the secret tunnel and moments away from the revived Seafront. Viewings by appointment only. Share Of Freehold



Property Description

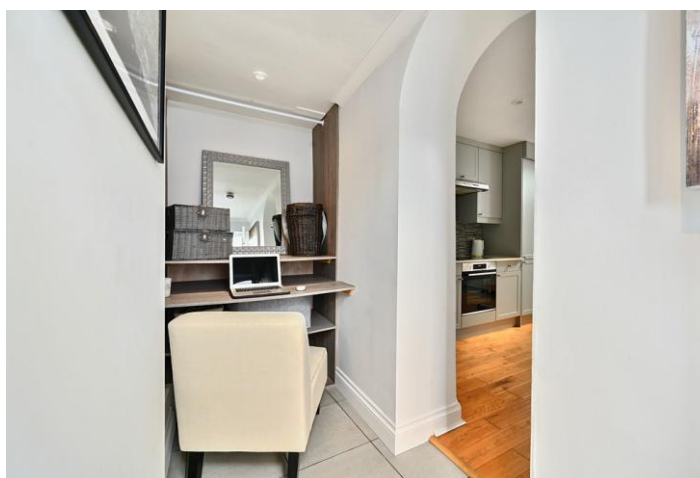
Superb in design and finish with absolutely no effort required; except enjoy the delights that the newly revived Kemp Town Seafront

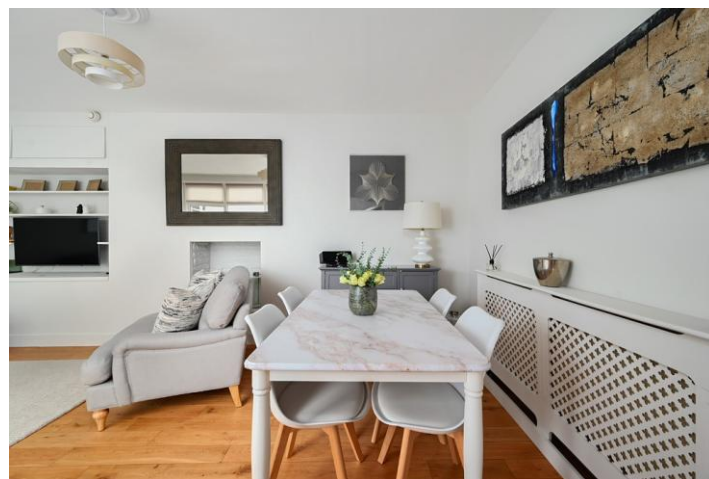
The front courtyard patio sets the tone for the whole apartment oozes charm yet practical with composite tiles underfoot and freshly painted façade. There is a useful cupboard under the stairs which is perfect for paddle boards, deck chairs and bikes

Upon entering, you'll find a practical entrance space with built-in storage: perfect for working from home. The double bedroom is spacious and benefits from dual windows flooding in plenty of natural light. A large walk in shower room is tucked away again stylish yet practical.

Leading into the heart of the home: a thoughtfully designed open-plan kitchen which naturally flows through to the living space. The design of the apartment facilities access and views to the glorious patio courtyard, tranquil and certainly offers Zen style living.

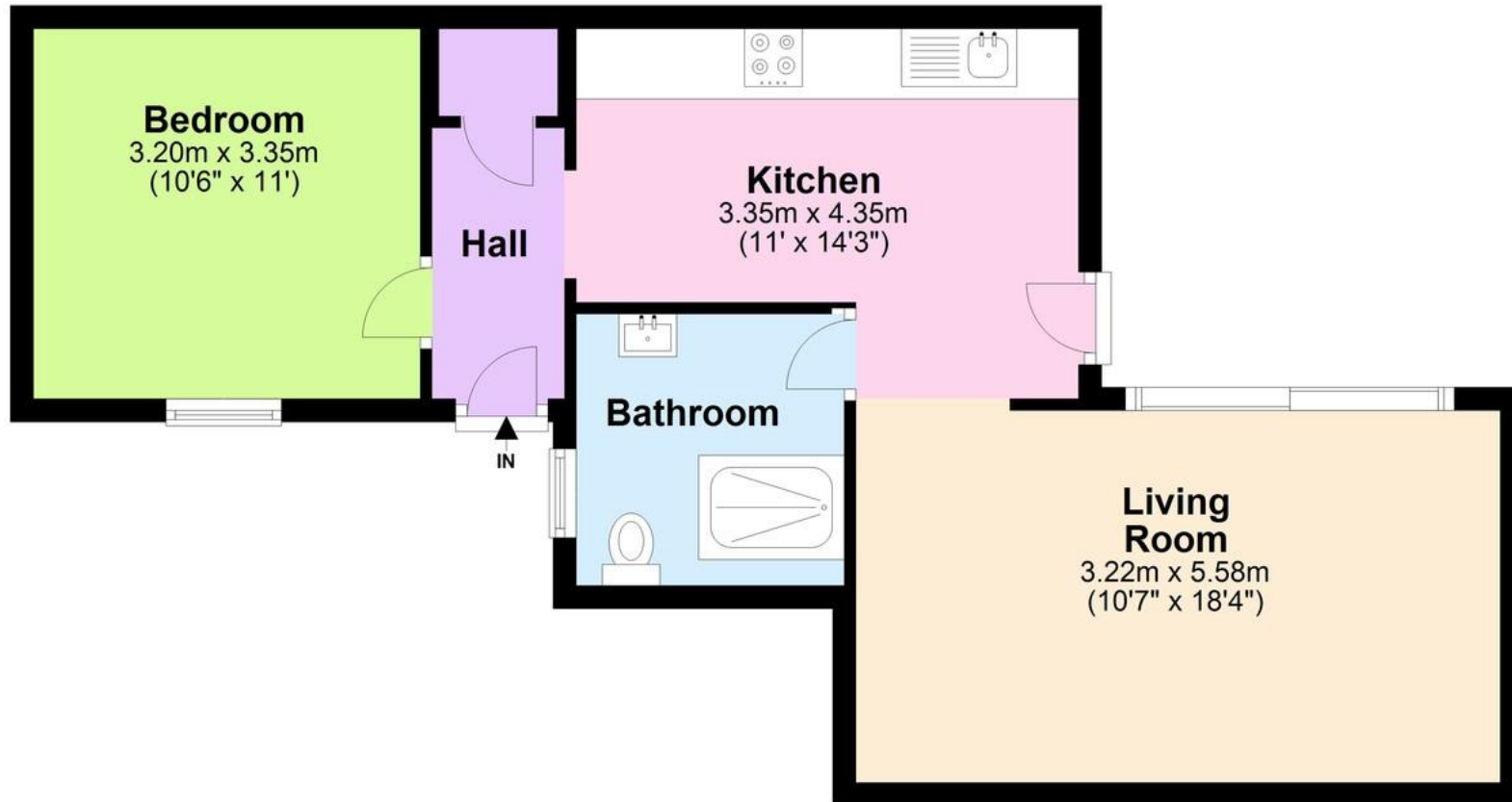
This property benefits from Share of Freehold: Long Lease: Access to Kemp Town Enclosures with its secret tunnel loved by all that hold the "key". An ideal first time buy or bolt hole.





Floor Plan

Approx. 51.7 sq. metres (556.2 sq. feet)



Total area: approx. 51.7 sq. metres (556.2 sq. feet)

29 Upper St James Street,
Brighton, East Sussex, BN2 1JN

www.paulbottandcompany.co.uk
01273 605530
info@paulbottandcompany.co.uk

Agents Note: Whilst every care has been taken to prepare these sales particulars, they are for guidance purposes only. All measurements are approximate are for general guidance purposes only and whilst every care has been taken to ensure their accuracy, they should not be relied upon and potential buyers are advised to recheck the measurements