



25 The Featherworks, Boston, Lincolnshire, PE21 0AF
Price £219,995



25 The Featherworks, Boston, Lincolnshire, PE21 0AF

This well-maintained property offers a modern and spacious living environment. The ground floor boasts a lovely hallway with access to the dining room and kitchen, Bedroom 4 / Office and stairs to the first floor. The kitchen is seamlessly connected to the rear garden that is equipped with lovely patio. The first floor boasts two well proportioned bedrooms, a living room and family bathroom. The living room is very spacious, perfect for relaxing. On the third floor of the property, there is one very spacious double room with its own hallway area and large bathroom. The bathroom is equipped with both a bath and also a shower. The bedroom is bright, with large windows letting the sunlight through.



Kitchen

15'6" x 10'0" (4.72m x 3.05m)

Modern and spacious with sleek cabinetry and outdoor access.

Living Room

19'8" x 10'8" (5.99m x 3.25m)

Bright, spacious, and perfect for relaxing or entertaining.

Dining Room

13'2" x 8'7" (4.02 x 2.63)

Bright and versatile, perfect as a sitting area or home office.

Hallway

16'11" x 6'7" (5.17 x 2.01)

Lovely spacious entrance to the property

Bedroom 1

10'11" x 8'11" (3.34 x 2.73)

Bright and airy bedroom with ample space for comfort.

Bedroom 2

12'1" x 7'8" (3.69 x 2.35)

Lovely well proportioned bedroom.

Bedroom 3

14'6" x 12'3" (4.44 x 3.74)

Spacious bedroom positioned on the second floor, offering a conveniently located bathroom and hallway.

WC

5'1" x 3'0" (1.55 x 0.92)

Conveniently located WC

Bathroom

5'5" x 7'5" (1.66 x 2.28)

Lovely family bathroom

Bathroom

8'7" x 7'4" (2.64 x 2.24)

Spacious bathroom on the second floor including bath and shower.

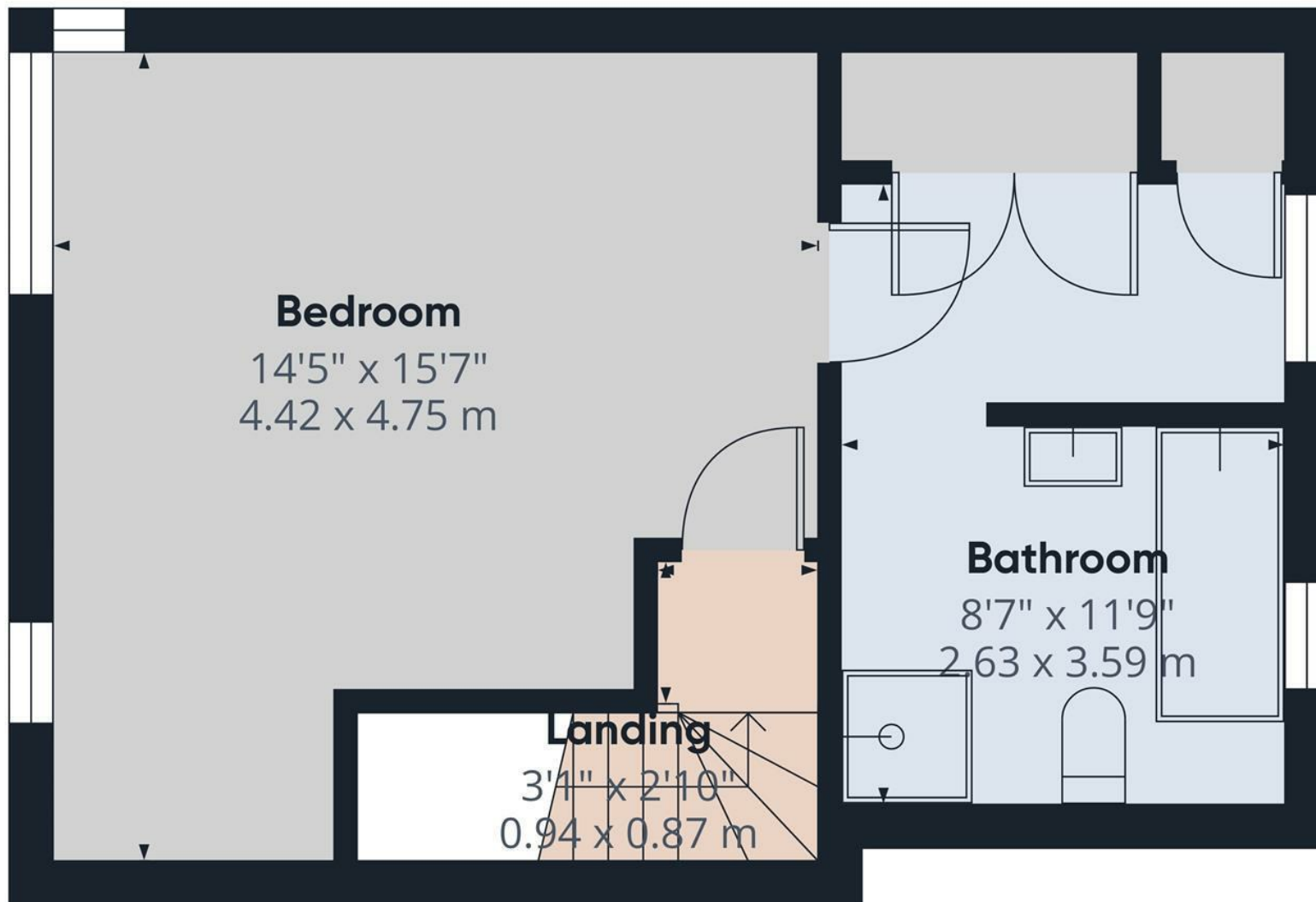
Description

This modern three-storey townhouse offers over 1,200 sq. ft. of versatile living space, combining contemporary

design with practical family features. The ground floor provides a welcoming hallway, a WC, a fitted kitchen, and a bright living/dining area. The first floor offers two bedrooms, a family bathroom, and a large multipurpose room that can serve as a living room or extra bedroom. The top floor is dedicated to a generous main bedroom with its own large bathroom. With its stylish timber-clad exterior, ample natural light from tall windows, and flexible layout, this property is ideal for modern family living or professionals seeking space for home working.







Floor 2

Approximate total area⁽¹⁾

315 ft²

29.3 m²

(1) Excluding balconies and terraces

Calculations reference the RICS IPMS 3C standard. Measurements are approximate and not to scale. This floor plan is intended for illustration only.

GIRAFFE360