

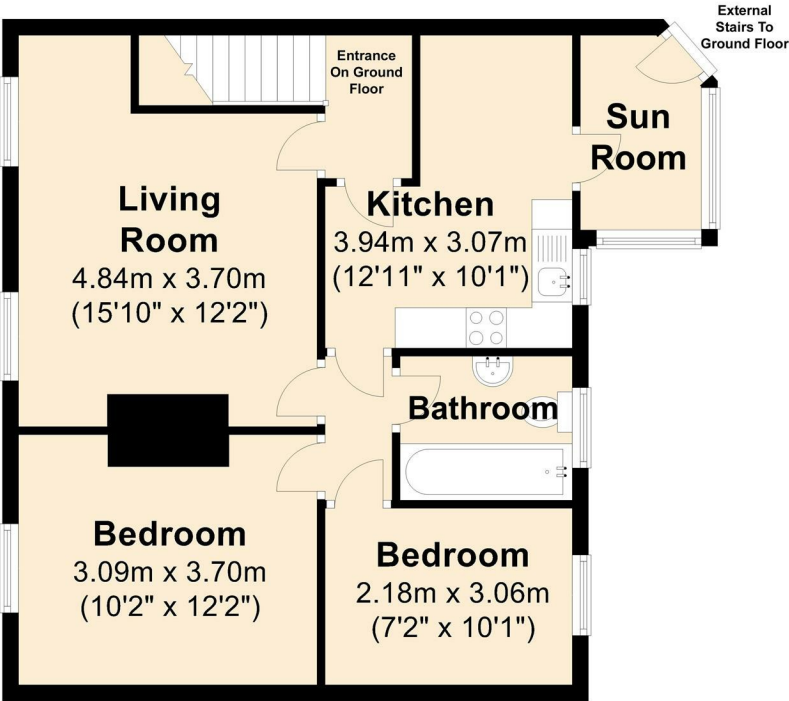
ASKING PRICE
£280,000
Regal Court
London, N18 2XU

EPC RATING: COUNCIL TAX BAND: B

Regal Court, N18 2XU

First Floor

Approx. 58.7 sq. metres (631.7 sq. feet)



Total area: approx. 58.7 sq. metres (631.7 sq. feet)
For illustration purposes only - not to scale



Energy Efficiency Rating		
	Current	Potential
Very energy efficient - lower running costs		
(92 plus) A		
(81-91) B		
(69-80) C		
(55-68) D		
(39-54) E		
(21-38) F		
(1-20) G		
Not energy efficient - higher running costs		
England & Wales	EU Directive 2002/91/EC	



Agents Note: Whilst every care has been taken to prepare these particulars, they are for guidance purposes only. All measurements are approximate and are for general guidance purposes only and whilst every care has been taken to ensure their accuracy, they should not be relied upon and potential buyers/tenants are advised to recheck the measurements.

Christopher Mark

ESTATE AGENTS

OFFICE ADDRESS

25 Heddon Court Parade

London

EN4 0DB

OFFICE DETAILS

02033 690989

Hello@christophermark.co.uk