

ASKING PRICE

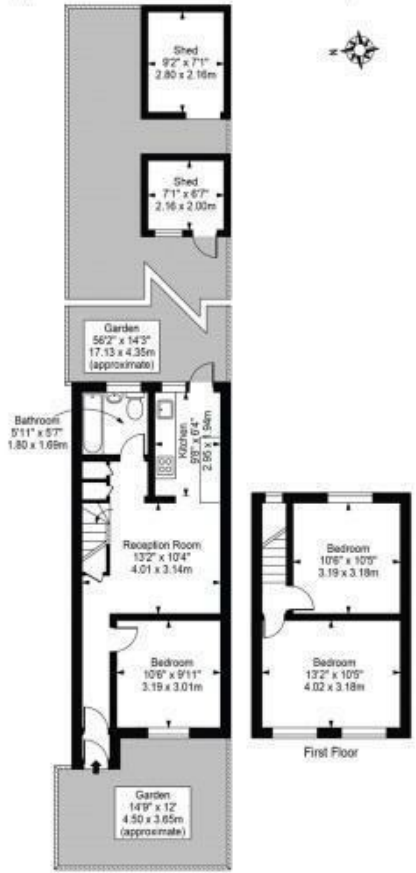
£480,000

Spencer Road

London, N17 9UU

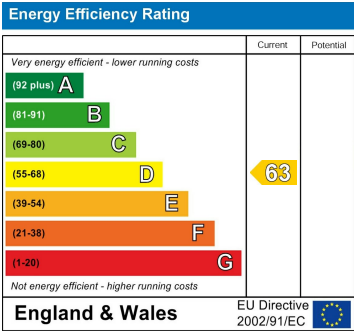
EPC RATING: D COUNCIL TAX BAND: C

Spencer Road, N17 9UU
Approx. Gross Internal Area 705 Sq Ft - 65.52 Sq M
(Excluding Sheds)
Approx. Gross Internal Area of Sheds 112 Sq Ft - 10.37 Sq M



For Illustration Purposes Only - Not To Scale

This floor plan should be used as a general outline for guidance only and does not constitute in whole or in part an offer or contract. Any intending purchaser or lessee should satisfy themselves by inspection, searches, enquiries and full survey as to the correctness of each statement. Any areas, measurements or distances quoted are approximate and should not be used to value a property or be the basis of any sale or let.



Agents Note: Whilst every care has been taken to prepare these particulars, they are for guidance purposes only. All measurements are approximate and are for general guidance purposes only and whilst every care has been taken to ensure their accuracy, they should not be relied upon and potential buyers/tenants are advised to recheck the measurements.

Christopher Mark
ESTATE AGENTS

OFFICE ADDRESS

25 Heddon Court Parade
London
EN4 0DB

OFFICE DETAILS

02033 690989
Hello@christophermark.co.uk