



ASKING PRICE

£365,000

Baker Street

Enfield, EN1 3LQ

PROPERTY SUMMARY

Discover this beautifully presented three-bedroom apartment offering the perfect blend of character, space, and everyday convenience. Set within a charming period building, this 905 sq ft home is ideal for growing families, sharers, or anyone seeking extra room to spread out and relax.

Step into a bright and welcoming reception room – a perfect setting for cosy nights in or entertaining friends. The apartment also benefits from two bathrooms, making busy mornings a breeze and adding a touch of everyday luxury.

The layout is thoughtfully designed, with three generously sized bedrooms offering versatility – whether you need guest space, a home office, or room for the kids.

Situated just moments from local shops, cafés, and amenities, this home offers the ease of modern living within a vibrant and well-connected community.

A rare opportunity to enjoy the charm of a character property without compromising on contemporary comforts – ideal for first-time buyers, young families, or savvy investors. Early viewing is highly recommended.

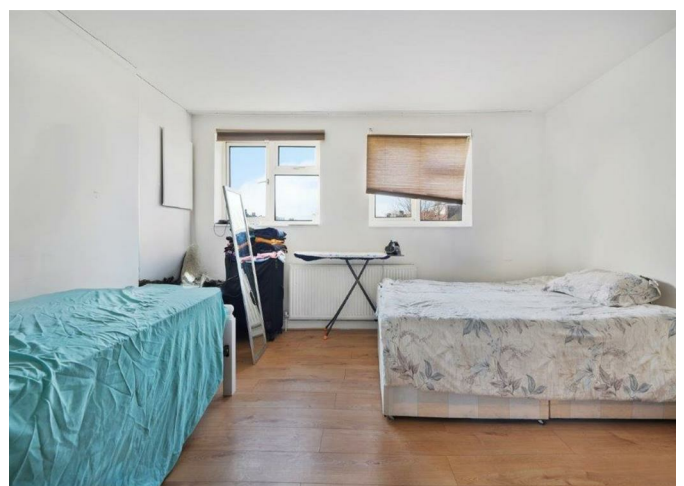
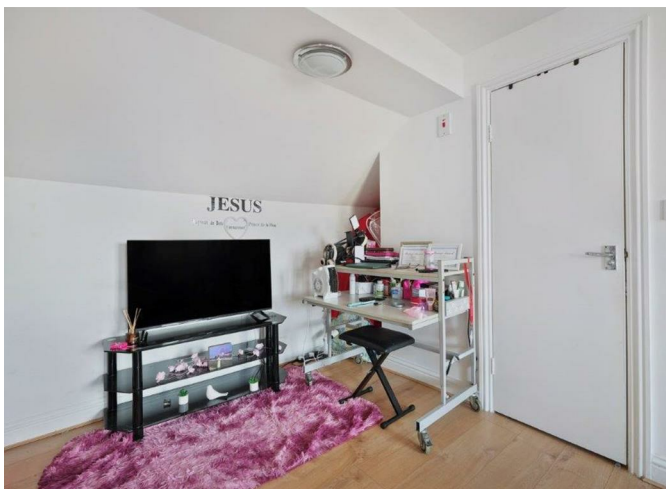
3



2



1



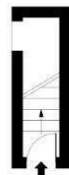






Baker Street, EN1

Approx. Gross Internal Area 905 Sq Ft - 84.08 Sq M



Ground Floor

Floor Area 41 Sq Ft - 3.81 Sq M



First Floor

Floor Area 596 Sq Ft - 55.37 Sq M



Second Floor

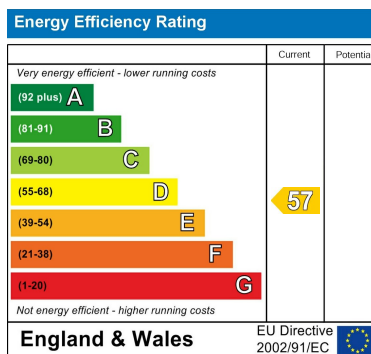
Floor Area 268 Sq Ft - 24.90 Sq M



Measured according to RICS IPMS2. Floor plan is for illustrative purposes only and is not to scale. Every attempt has been made to ensure the accuracy of the floor plan shown, however all measurements, fixtures, fittings and data shown are an approximate interpretation for illustrative purposes only. 1 sq m = 10.76 sq feet.

lpaplus.com

Date: 28/1/2025



EPC RATING: D COUNCIL TAX BAND: B

Agents Note: Whilst every care has been taken to prepare these particulars, they are for guidance purposes only. All measurements are approximate and are for general guidance purposes only and whilst every care has been taken to ensure their accuracy, they should not be relied upon and potential buyers/tenants are advised to recheck the measurements.



Christopher Mark

ESTATE AGENTS

OFFICE ADDRESS
25 Heddon Court
Parade
London
EN4 0DB

OFFICE DETAILS
02033 690989
Hello@christophermark.co.uk