

OFFERS IN THE REGION OF
£500,000
Belmont Close
Cockfosters, EN4 9LS

PROPERTY SUMMARY

Nestled in the charming area of Cockfosters, this delightful purpose-built flat on Belmont Close offers a perfect blend of comfort and convenience. Spanning an impressive 936 square feet, this residence is ideal for families or professionals seeking a spacious living environment.

The flat features a welcoming reception room, providing an inviting space for relaxation and entertaining guests. With three well-proportioned bedrooms, there is ample room for everyone to enjoy their own private sanctuary. The property also boasts two bathrooms, ensuring that morning routines run smoothly and comfortably.

Constructed in 1930, this flat reflects a classic architectural style while benefiting from modern amenities. Its post-1914 build means it has been designed with both character and functionality in mind, making it a wonderful place to call home.

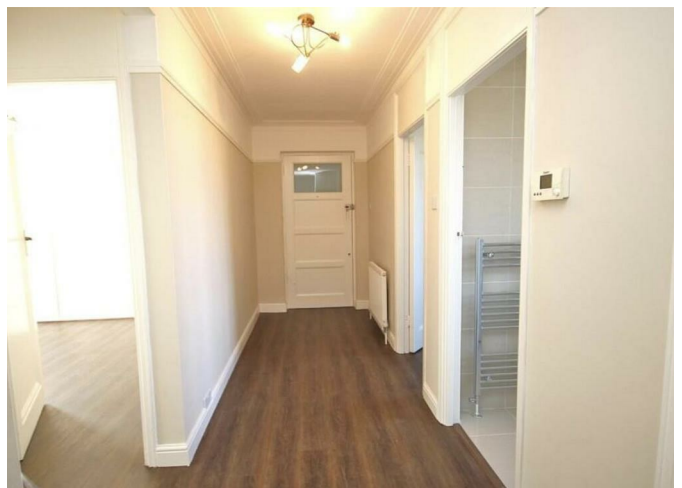
3



2



1

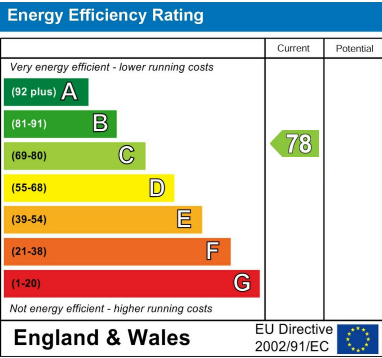




3
2
1








EPC RATING: C COUNCIL TAX BAND: D

Agents Note: Whilst every care has been taken to prepare these particulars, they are for guidance purposes only. All measurements are approximate and are for general guidance purposes only and whilst every care has been taken to ensure their accuracy, they should not be relied upon and potential buyers/tenants are advised to recheck the measurements



Christopher Mark

ESTATE AGENTS

OFFICE ADDRESS

25 Heddon Court
Parade
London
EN4 0DB

OFFICE DETAILS

02033 690989
Hello@christophermark.co.uk