



Viewings

Viewings by arrangement only.
Call 0114 2666300 to make an appointment.

Vendors Comments

Add text here

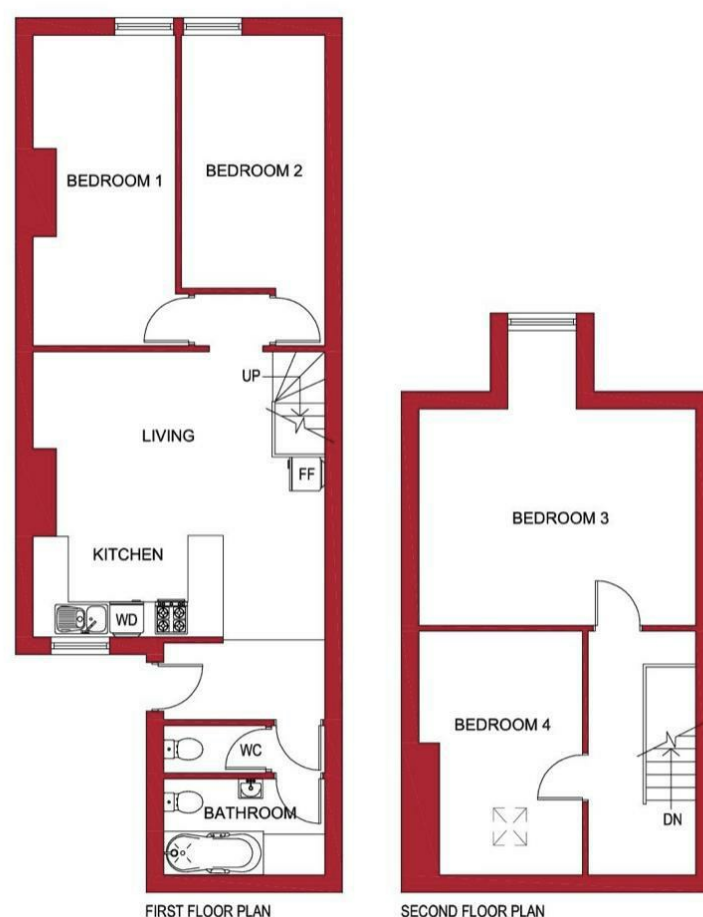
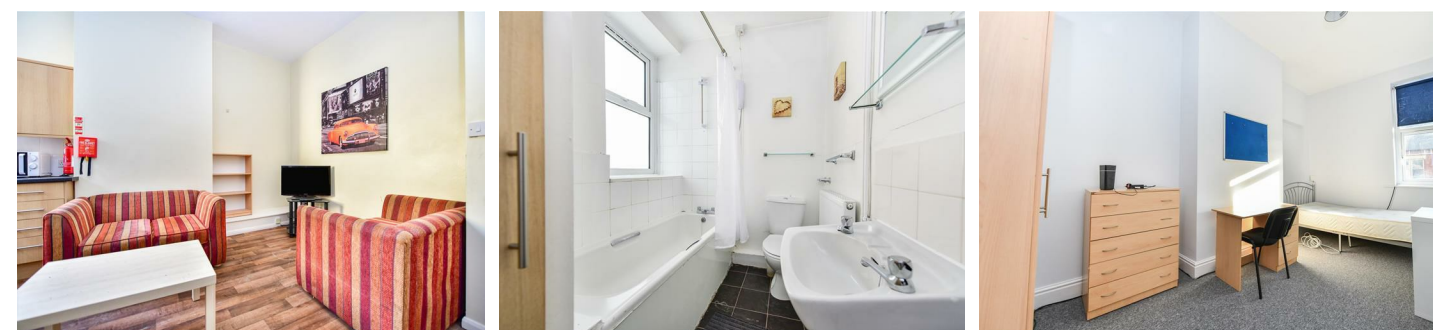
Energy Efficiency Rating		
	Current	Potential
Very energy efficient - lower running costs		
(92 plus) A		
(81-91) B		
(69-80) C		
(55-68) D		
(39-54) E		
(21-38) F		
(1-20) G		
Not energy efficient - higher running costs		
England & Wales	EU Directive 2002/91/EC	

JC SALES & LETTINGS

Tel: 0114 483 0038

E-mail: sales@jc-salesandlettings.com

Website: www.jc-salesandlettings.com



298A Ecclesall Road, Sheffield, S11 8PE

£65 Per week

- Student: £65 per person per week
- Bills included option includes gas, electricity, fibre internet, TV licence and water bills
- Available for a group of 3 or 4
- Well situated for Sheffield Hallam University
- Early viewing highly recommended to avoid disappointment
- Bills included option available at £91 per person per week
- Situated on Ecclesall Road
- Excellent location, close to an abundance of local amenities
- Modern facilities throughout
- EPC Grade E

298A Ecclesall Road, Sheffield S11 8PE

*** STUDENT *** £65 PER PERSON PER WEEK *** BILLS INCLUDED OPTION AVAILABLE AT £91 PER PERSON PER WEEK (Includes: Gas, electricity, fibre internet, water and TV licence) *** AVAILABLE FOR A GROUP OF 3 or 4 ***
A VERY WELL LOCATED, four bedroom TOP FLOOR APARTMENT with ACCOMMODATION OVER TWO FLOORS. Ideal for STUDENTS studying at SHEFFIELD HALLAM UNIVERSITY and close to an abundance of local amenities. Situated in the HIGHLY SOUGHT AFTER location of ECCLESALL ROAD.
In brief the accommodation comprises: open plan lounge / kitchen, two double bedrooms, bathroom and separate WC to the first floor. There are two double bedrooms to the second floor.
An early viewing is highly recommended to avoid disappointment!
EPC Grade E.

 4

 1

 1

 E

Council Tax Band: A

