

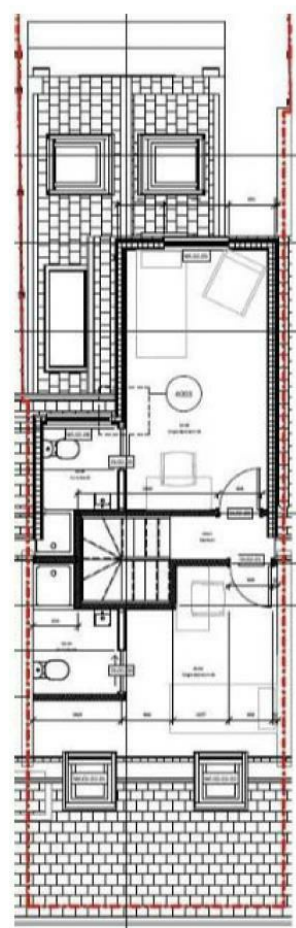
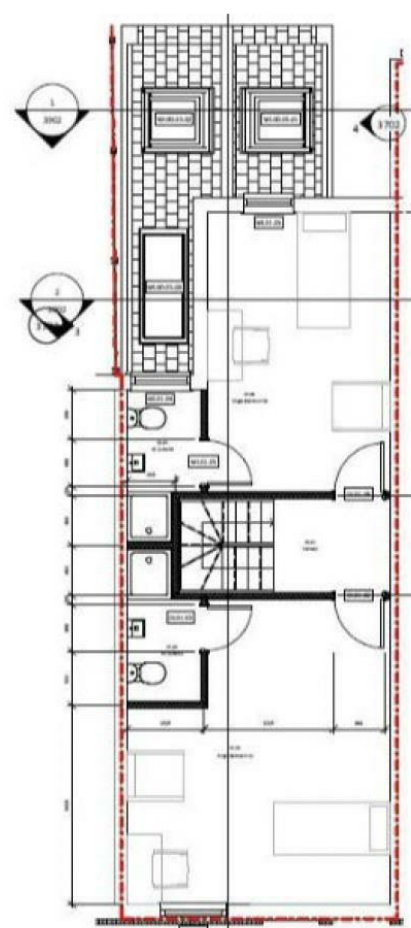
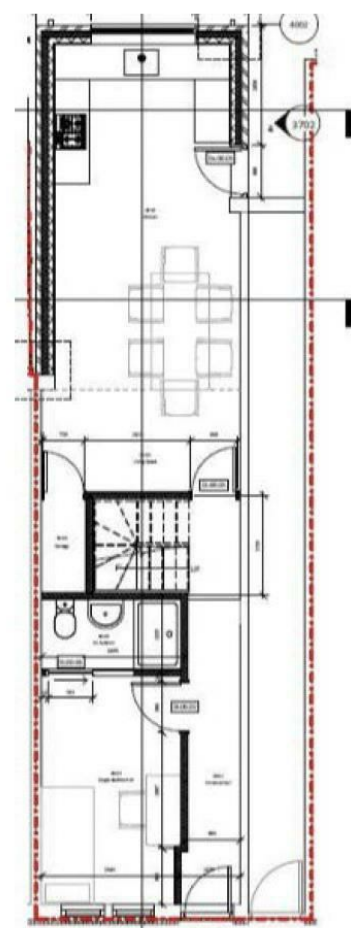
### Viewings

Viewings by arrangement only.  
Call 0114 2666300 to make an appointment.

### Vendors Comments

Add text here

Energy Efficiency Rating		
	Current	Potential
Very energy efficient - lower running costs		
(92 plus) <b>A</b>		
(81-91) <b>B</b>		84
(69-80) <b>C</b>		
(55-68) <b>D</b>	58	
(39-54) <b>E</b>		
(21-38) <b>F</b>		
(1-20) <b>G</b>		
Not energy efficient - higher running costs		
England & Wales		
EU Directive 2002/91/EC		

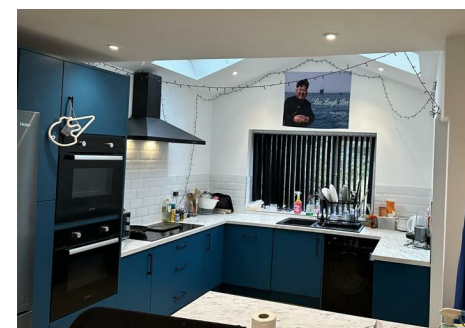


**JC SALES & LETTINGS**

Tel: 0114 483 0038

E-mail: [sales@jc-salesandlettings.com](mailto:sales@jc-salesandlettings.com)

Website: [www.jc-salesandlettings.com](http://www.jc-salesandlettings.com)



27 Arnold Street, Derby, DE22 3EW

£115 Per week

- 4 en-suite bedrooms
- £115 per person per week
- Gas central heating and double glazing
- Perfect location for University
- Viewing highly recommended
- Stunning modern furnishings throughout
- Bills included option available at £141 per person per week
- Fully equipped modern kitchen
- Local amenities and transport links nearby
- Available for a group of 4 student or professional sharers



# 27 Arnold Street, Derby DE22 3EW

\*\*\* STUDENT PROPERTY \*\*\* FOUR EN-SUITE BEDROOMS \*\*\*  
\*\*\* £115 PER PERSON PER WEEK \*\*\* BILLS INCLUDED OPTION AVAILABLE AT £141ppw (Includes gas, electricity, fibre internet, TV licence and water bills)  
\*\*\* MODERN FITTINGS THROUGHOUT \*\*\* PERFECT LOCATION FOR THE UNIVERSITY \*\*\* AVAILABLE FROM 1ST JULY 2026 \*\*\*  
Modern four bedroom mid terrace property, with five bathrooms and very modern fixtures and fittings throughout. Excellent location for the university and conveniently located for a host of local amenities.  
In brief the accommodation comprises: entrance hall, living room with bathroom, open plan extended dining kitchen, two first floor bedrooms, both with en-suite and two second floor bedrooms, both with en-suite. Garden to the rear.  
An early viewing is highly recommended to avoid disappointment!  
EPC Grade D.

 4

 5

 1

 D

Council Tax Band: A

