



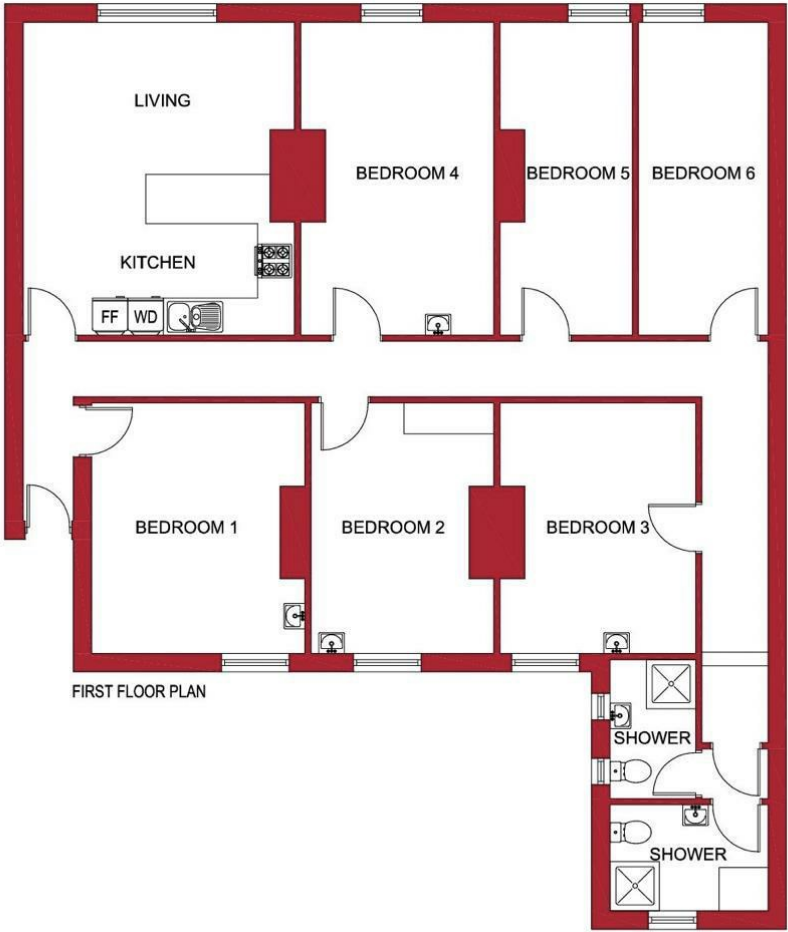
Viewings

Viewings by arrangement only.
Call 0114 2666300 to make an appointment.

Vendors Comments

Add text here

Energy Efficiency Rating		
	Current	Potential
Very energy efficient - lower running costs		
(92 plus) A		
(81-91) B		
(69-80) C		
(55-68) D	71	77
(39-54) E		
(21-38) F		
(1-20) G		
Not energy efficient - higher running costs		
England & Wales		
EU Directive 2002/91/EC		



Tel: 0114 483 0038
E-mail: sales@jc-salesandlettings.com
Website: www.jc-salesandlettings.com



Room 6, 294A Ecclesall Road, Sheffield, S11 8PE

£110 Per week

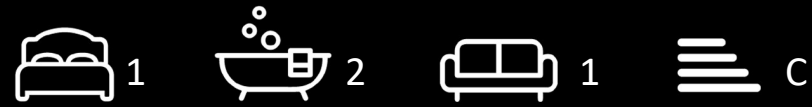
- £110 per week to include all bills
- Shared six bedroom property
- Excellent location on Ecclesall Road
- Ideal for students studying at Sheffield Hallam University
- Large double room available
- Two bathrooms
- Close to an abundance of local amenities
- EPC Grade C

Room 6, 294A Ecclesall Road, Sheffield S11 8PE

*** STUDENT *** £110 PER WEEK, TO INCLUDE ALL BILLS ***

LARGE DOUBLE BEDROOM in a SHARED, six bedroom property available to STUDENTS, with TWO BATHROOMS. A VERY WELL LOCATED, six bedroom APARTMENT close to an abundance of local amenities and situated in the HIGHLY SOUGHT AFTER location off ECCLESALL ROAD.

In brief the accommodation comprises: open plan lounge / kitchen, large double bedroom and two bathrooms. An early viewing is highly recommended to avoid disappointment! EPC Grade C.



Council Tax Band: B

