



House - Detached (EPC Rating: B)

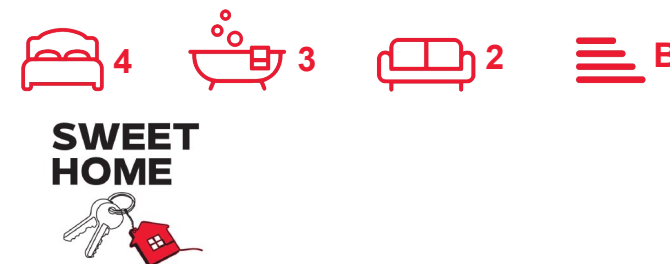
# 7 MCMILLAN GARDENS, AIRDRIE, ML6 9GF

Offers over

## £369,995

### FEATURES

- 4 bedrooms, master en-suite
- Juliet balcony in master
- Log burner in lounge
- Open-plan family room
- Converted office space
- Decking and patio area
- Mini putting green
- Quiet cul-de-sac location



# 4 Bedroom House - Detached located in Airdrie

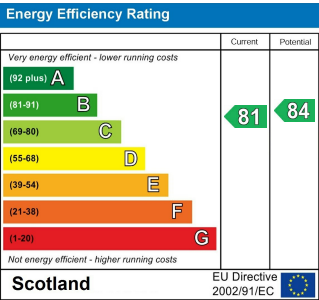
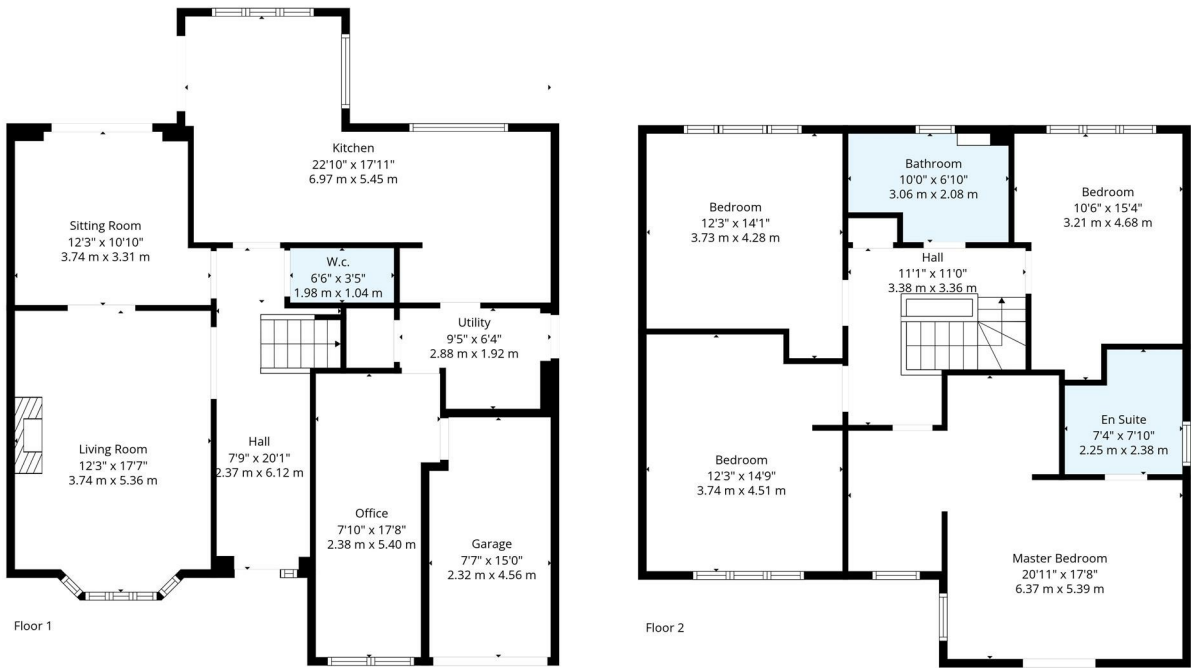
Caroline Morrison is proud to bring to market this stunning four-bedroom house, built by the esteemed David Wilson Homes, offers a perfect blend of modern living and comfort. The property, designed in the elegant style of The Crammond, boasts a spacious layout that is ideal for families and those who enjoy entertaining.

Upon entering, you are greeted by a welcoming ground floor hall that leads to a convenient WC. The lounge features a charming social point log burner, creating a warm and inviting atmosphere. Adjacent to the lounge is a dining room, currently utilised as a second sitting room, which opens through French doors to the rear garden, allowing for seamless indoor-outdoor living. The open-plan family room and breakfast area, presently used as a dining room, also provides access to the garden, making it a delightful space for gatherings. The large kitchen is complemented by a separate utility room and a store room, with direct access to the office space created from half of the integral garage.

The upper floor is equally impressive, featuring four well-appointed bedrooms. The master suite includes a luxurious four-piece en suite, a Juliet balcony, and a dressing area, while the remaining bedrooms are fitted with built-in wardrobes. A stylish four-piece family bathroom serves the other rooms, ensuring ample facilities for all.

Call us on  
**07717504350**  
[sales@sweet-home.co.uk](mailto:sales@sweet-home.co.uk)  
<https://sweet-home.co.uk/>

Council Tax Band  
**G**



Agents Note: Whilst every care has been taken to prepare these particulars, they are for guidance purposes only. All measurements are approximate and are for general guidance purposes only and whilst every care has been taken to ensure their accuracy, they should not be relied upon and potential buyers are advised to recheck the measurements.



**TOTAL: 1899 sq. ft, 177 m2**  
FLOOR 1: 902 sq. ft, 84 m2, FLOOR 2: 997 sq. ft, 93 m2  
EXCLUDED AREAS: GARAGE: 110 sq. ft, 10 m2, UTILITY: 52 sq. ft, 5 m2, WALLS: 154 sq. ft, 14 m2

Floor Plan Created By Cubicasa App. Measurements Deemed Highly Reliable But Not Guaranteed.

