



22 Thackney Leys

Kibworth Harcourt

Offers Over
£160,000



Bedrooms: 2

Bathrooms: 1

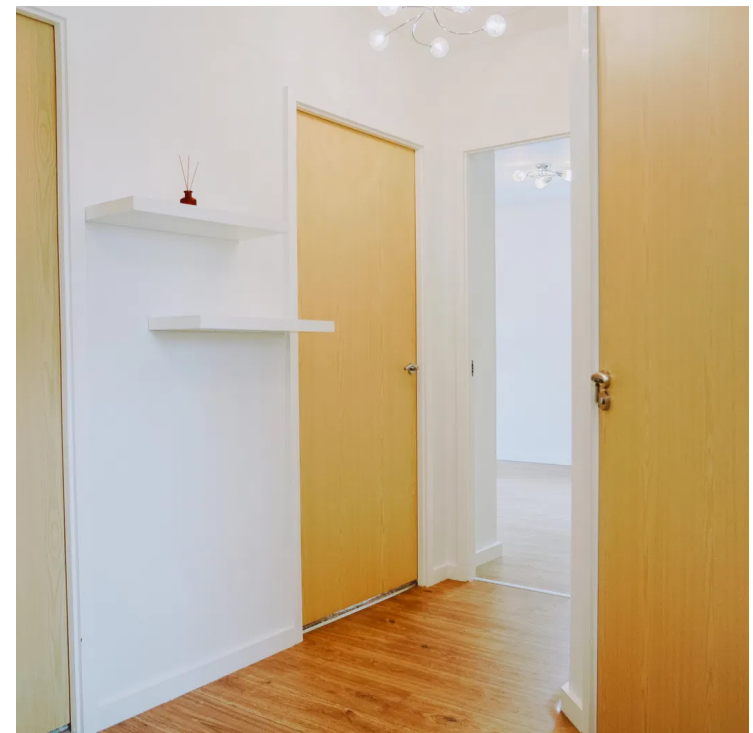
Receptions: 1

Set in the highly desirable village of Kibworth Harcourt, this modern two bedroom top floor apartment offers a fantastic opportunity for first time buyers, downsizers, or investors seeking a low maintenance home in a convenient and well connected location.

Beautifully presented throughout, the apartment enjoys a bright and airy feel, enhanced by generous natural light and an open, flowing layout. The welcoming entrance hall leads into a spacious open plan kitchen, dining, and living area, creating a perfect space for relaxing or entertaining guests. The modern fitted kitchen features ample storage and worktop space, along with integrated appliances and room for a breakfast table.

There are two well proportioned bedrooms, including a comfortable main bedroom with room for wardrobes, and a second bedroom which could serve as a guest room, nursery, or home office. The contemporary bathroom is stylishly fitted with a three-piece suite, including a bath with shower over, wash basin, and WC.





Bedrooms: 2

Bathrooms: 1

Receptions: 1

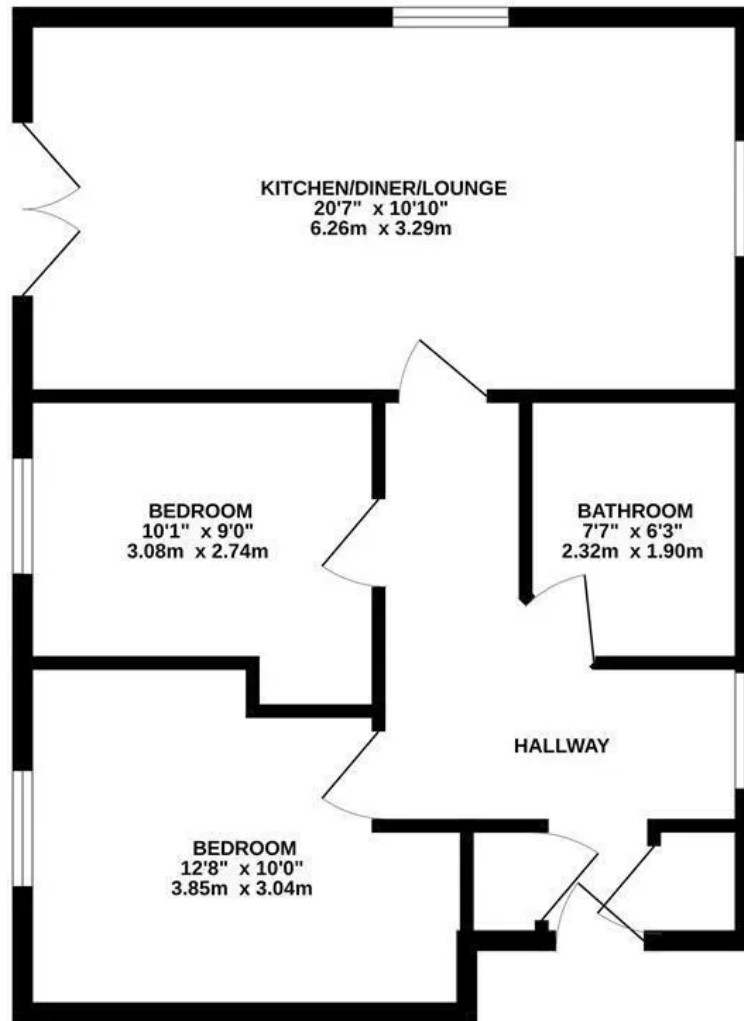
Outside, the property benefits from allocated off road parking and a private storage shed, offering that little bit of extra practicality that apartment living often lacks.

Located in a quiet and well kept development, the apartment is just moments from the A6, giving quick and easy access to Market Harborough and Leicester, ideal for commuters. Kibworth Harcourt itself is a beautiful village with a range of local amenities including shops, pubs, cafés, a primary school, and scenic countryside walks right on your doorstep.

With its combination of modern comfort, great location, and strong rental potential, this apartment is offers an excellent home.



GROUND FLOOR
567 sq.ft. (52.7 sq.m.) approx.



TOTAL FLOOR AREA: 567 sq.ft. (52.7 sq.m.) approx.

Whilst every attempt has been made to ensure the accuracy of the floorplan contained here, measurements of doors, windows, rooms and any other items are approximate and no responsibility is taken for any error, omission or mis-statement. This plan is for illustrative purposes only and should be used as such by any prospective purchaser. The services, systems and appliances shown have not been tested and no guarantee is given as to their operability or efficiency can be given.
Made with Metropix ©2025





Danielle Nutley Property
46a High Street Market Harborough

07837 027 235
danielle@nutleyproperty.co.uk
<https://daniellenutleyproperty.co.uk/>