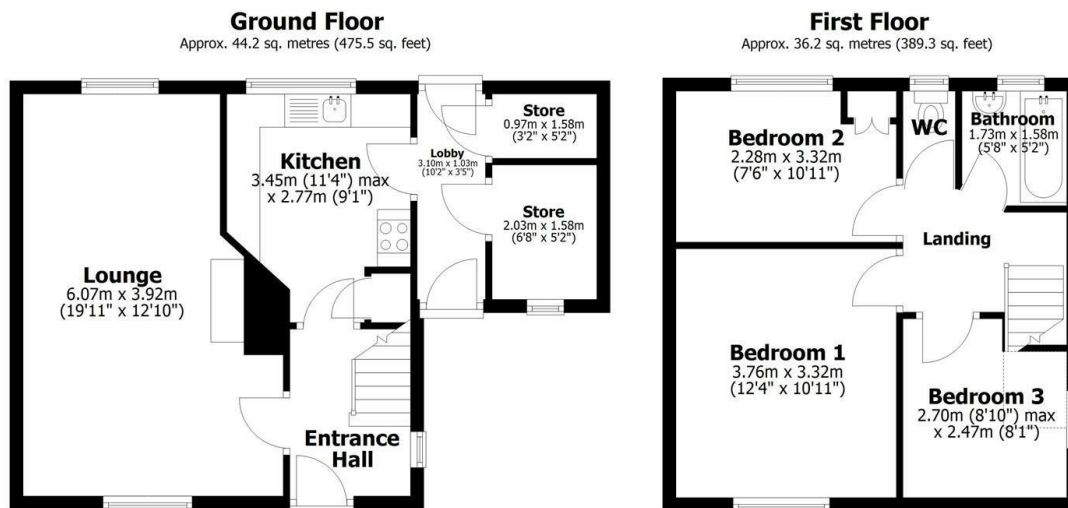




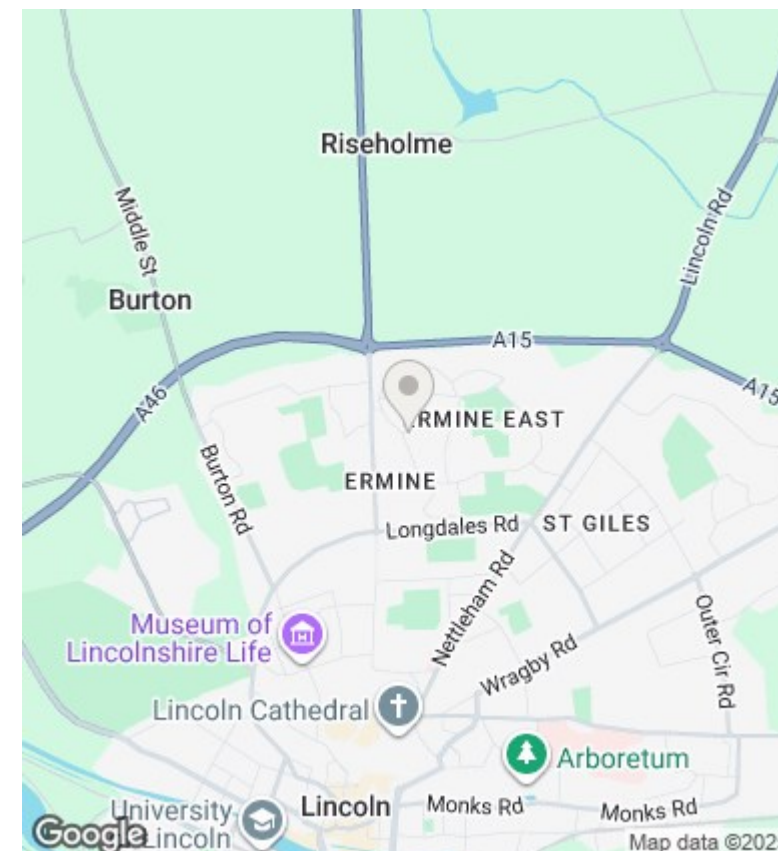
1 Willingham Avenue, Lincoln, LN2 2DL

Offers Over £140,000

- 3 Bedroom House on Large Corner Plot
- Large Front Garden and Enclosed Rear Garden
- Close to regular Public Transport Links
- EPC Rating C
- Fantastic First Time Buy Property
- Available with No Onward Chain
- Gas Central Heating and Double Glazed Windows
- Potential for Extension (subject to planning consent)
- Close to Schools and Amenities
- Council Tax Band A



Total area: approx. 80.3 sq. metres (864.7 sq. feet)



Directions

Viewings

Viewings by arrangement only. Call 01522 396059 to make an appointment.

Council Tax Band

C

EPC Rating:

C

Energy Efficiency Rating		
	Current	Potential
Very energy efficient - lower running costs		
(92 plus) A		
(81-91) B		
(69-80) C	70	77
(55-68) D		
(39-54) E		
(21-38) F		
(1-20) G		
Not energy efficient - higher running costs		
England & Wales	EU Directive 2002/91/EC	