



STURGES  
LONDON

Merchant Square

£3,294 Per calendar month



- Interior designed spacious apartment
- In the heart of Paddington Basin
- CCTV, Digital TV and Video Entry
- New and modern open plan kitchen
- Features concierge, underground parking and porter
- Excellent transport links
- 4th Floor



STURGES  
LONDON





## , London

This luxuriously spacious (538sq ft) interior designed, elegant 1 double bedroom apartment is set within the heart of the Paddington Basin.

The apartment is situated on the fourth floor of this prestigious building which features concierge service, lift service and secure underground parking.

The spacious and bright apartment comprises a beautiful reception room with a new and modern open plan kitchen, double bedroom and bathroom.

The apartment offers easy access to superb transport links such as Paddington Train Station (Elizabeth Line, Bakerloo, Hammersmith & City, Circle, District lines and Heathrow express) Edgware Road (Circle, District and Bakerloo lines).

**Local Authority:**

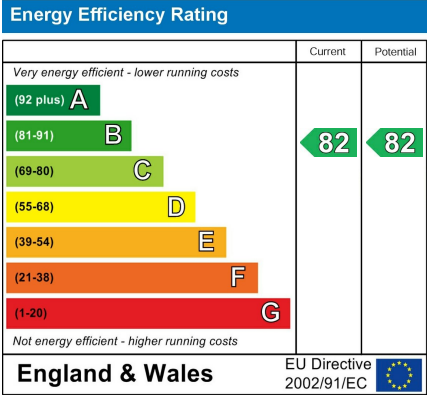
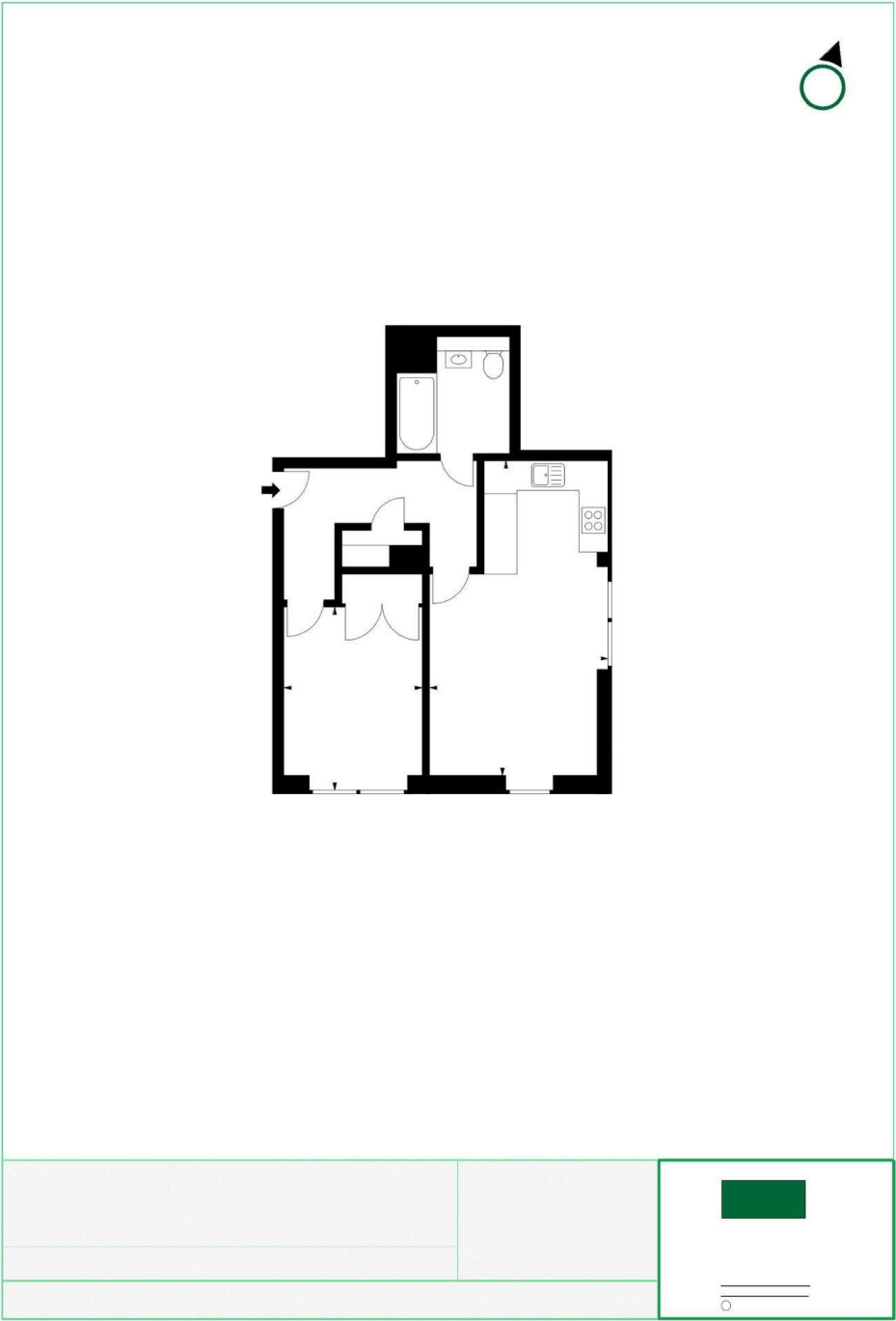
**Council Tax Band:** E

**Lease:** Add text here

**Service Charges:** Add text here

**Ground Rent:** Add text here

**STURGES**  
LONDON



**For more information, please contact:**

(Tel) 020 3393 2002  
(Email) [hello@sturgeslondon.co.uk](mailto:hello@sturgeslondon.co.uk)

668 Fulham Road, Parsons Green, London, SW6 5RX

[sturgeslondon.co.uk](http://sturgeslondon.co.uk)

Agents Note: Whilst every care has been taken to prepare these particulars, they are for guidance purposes only. All measurements are approximate and for general guidance purposes only and whilst every care has been taken to ensure accuracy, they should not be relied upon and potential buyers/tenants are advised to recheck the measurements.