

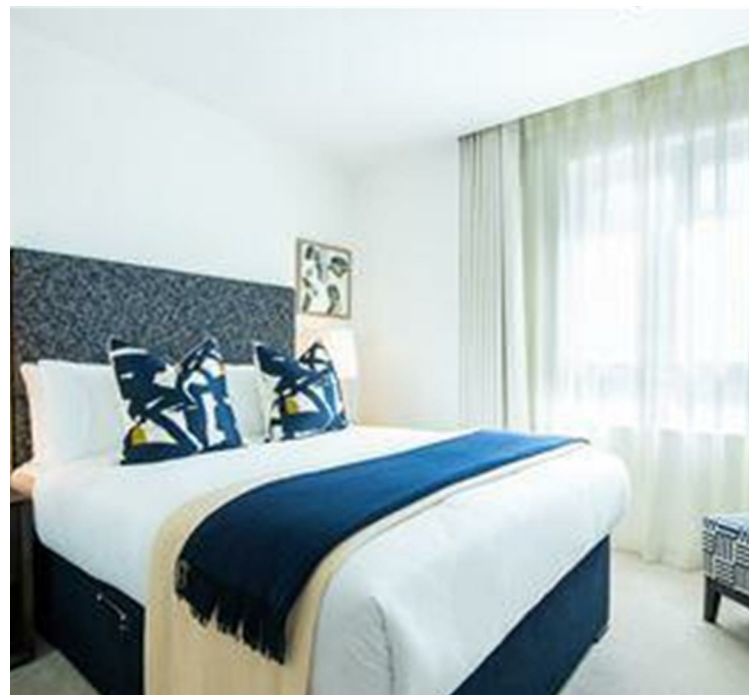


STURGES
LONDON

Garrett Mansions, West End Gate
£8,624 Per calendar month



- 3 Bedroom Interior Designed apartment
- A Central location with great transport links
- Fully integrated kitchen with high end appliances including Siemens and Miele
- Open plan reception room onto a private balcony
- Comfort Cooling throughout
- Residents have access to the onsite Gym, Pool, Lounge and Private Dining Room
- There are also conference facilities, 24 Hour Concierge as well as a Cinema room
- Internet is already connected for immediate use



STURGES
LONDON



, London

A luxurious interior designed three-bedroom 3rd floor apartment set over 1013 SqFt comprising a large open-plan reception room leading onto the private balcony. The fully integrated kitchen with appliances from Siemens and Miele including oven and induction hobs, large fridge freezer, dishwasher and wine chiller all inset into composite stone work tops. The apartment has three double bedrooms with the master including an ensuite and a family bathroom. The whole apartment benefits from comfort cooling.

This apartment comes complete with large Samsung Smart TVs and a Samsung sound bar and is offered with the full use of onsite facilities including a gym, pool, residence lounge area, private dining room, conference facilities, 24 hour concierge and Cinema room. The apartment is ready to move into with internet already connected.

Local Authority:


Council Tax Band: F

Lease: Add text here

Service Charges: Add text here

Ground Rent: Add text here

STURGES
LONDON

Energy Efficiency Rating		
	Current	Potential
Very energy efficient - lower running costs		
(92 plus) A		
(81-91) B		
(69-80) C		
(55-68) D		
(39-54) E		
(21-38) F		
(1-20) G		
Not energy efficient - higher running costs		
England & Wales	EU Directive 2002/91/EC	

For more information, please contact:

(Tel) 020 3393 2002

(Email) hello@sturgeslondon.co.uk

668 Fulham Road, London, SW6 5RX

sturgeslondon.co.uk

Agents Note: Whilst every care has been taken to prepare these particulars, they are for guidance purposes only. All measurements are approximate and for general guidance purposes only and whilst every care has been taken to ensure accuracy, they should not be relied upon and potential buyers/tenants are advised to recheck the measurements.