



WILLOWBANK MEADOWS

Alderton

Willow Bank Road, Alderton, GL20 8NJ

www.owlhomes.co.uk

willowbankmeadows@owlhomes.co.uk



WILLOWBANK MEADOWS

Alderton





WHERE YOUR NEXT CHAPTER BEGINS

Nestled at the foot of the Cotswolds in the charming village of Alderton, Willowbank Meadows is a carefully-crafted collection of 48 homes designed to celebrate the beauty of rural living. With scenic countryside on all sides and a strong village spirit at its heart, this is a place where peace, connection and community come together.

Offering a selection of 1, 2, 3 and 4-bedroom homes, Willowbank Meadows is a development for every stage of life - from first-time buyers and growing families to downsizers seeking a simpler way of living. Whether you're starting out or winding down, this is somewhere where you can truly feel at home.



"Thank you Owl Homes for building a beautiful home for us. Our friends and family are amazed at how big the rooms are."

The Oino family

WHAT'S HERE FOR YOU

- 48 BEAUTIFULLY CRAFTED, ENERGY-EFFICIENT, NEW HOMES
- A SELECTION OF 1, 2, 3, & 4 BEDROOM HOMES
- RURAL VILLAGE LOCATION
- EXCEPTIONAL LOCAL COMMUNITY SPIRIT
- ONLY 10 MINUTES FROM WINCHCOMBE



CONNECTED, COUNTRYSIDE LIVING

At Willowbank Meadows, the landscape sets the tone. Quiet roads, wide skies and views across rolling farmland create a sense of space and stillness, yet you're never far from life's everyday essentials. Alderton's community-run shop, traditional pub, nursery and primary school and community village hall have everything you need close to home. Further afield, the nearby towns of Tewkesbury, Winchcombe, Cheltenham and Evesham provide wider connections and amenities.

PERFECTLY POSITIONED WITHIN EASY REACH

- ✦ **ALDERTON VILLAGE STORE & POST OFFICE**
0.3 Miles – 6 Minute Walk
- ✦ **PLAYING FIELD**
0.3 Miles – 6 Minute Walk
- ✦ **THE GARDENER'S ARMS**
0.3 Miles – 7 Minute Walk
- ✦ **OAK HILL SCHOOL**
0.4 Miles – 8 Minute Walk
- ✦ **VILLAGE HALL**
0.4 Miles – 9 Minute Walk
- ✦ **ALDERTON ACORNS PRE-SCHOOL & TODDLERS**
0.8 Miles - 3 Minute Drive
- ✦ **ST MARGARET OF ANTIOCH CHURCH**
0.5 Miles - 11 Minute Walk
- ✦ **TEDDINGTON'S FARM SHOP**
2.6 Miles - 5 Minute Drive
- ✦ **WINCHCOMBE**
4.5 Miles - 10 Minute Drive
- ✦ **COTSWOLDS DESIGNER OUTLET**
5.7 Miles – 18 Minute Drive
- ✦ **CHELTENHAM**
12 Miles – 25 Minute Drive





EASY LIVING, LOCAL CHARM

For those looking to downsize or simply enjoy a laid-back way of life, Willowbank Meadows is a great choice. With a strong community spirit, easy access to local amenities and the added benefit of a low-maintenance new home, it's well suited to those looking for a quieter lifestyle.

This peaceful setting makes it easy to work from home, with Cheltenham, Gloucester and Worcester within reach for meetings or commuting. When the day ends, the open countryside and quiet surroundings help you switch off and enjoy your downtime.

Scan to explore the local community further:



FROM WEEKLY SHOPS TO WEEKEND TREATS

Alderton is ideally located for day-to-day convenience and weekend outings. Whilst Tewkesbury's historic charm, Cheltenham's shopping and dining scene, and Evesham's riverside setting all offer something different. Whether you're picking up groceries, browsing local shops or furnishing your new home, there's plenty of choice - from trusted high street names to local independents.

FOOD & DRINK FOR EVERY OCCASION

Alderton's Gardener's Arms is a friendly village pub within walking distance; great for a family meal or Sunday lunch. In nearby Broadway, Winchcombe and Cheltenham, you'll find a wider mix of cafes, restaurants and takeaways. Whether it's a quick bite or something special, there's somewhere nearby to suit every occasion.

ACTIVE DAYS, EASY LIVING

Living in Alderton means having the countryside right on your doorstep. There are plenty of local walking and cycling routes, as well as open green spaces and play areas for children. Just a short drive away, Cheltenham and Tewkesbury offer sports clubs, fitness centres and leisure facilities, so there's always something to do whatever your age or interests.

NURTURING THE NEXT GENERATION

Families will find a lot to love about life in Alderton. Alderton village primary school is just a short walk away and with low traffic and a friendly local atmosphere, it's a safe and supportive place for children to grow up. Older children are also well served by a range of secondary schools in the nearby towns.



A NEW PLACE TO CALL HOME

Willowbank Meadows is shaped around almost 2.5 acres of green infrastructure - with a community orchard, a children's play area and welcoming open spaces all connected by footpaths and cycle routes that weave through the site.

With a carefully curated mix of homes - each designed to complement its surroundings and foster a sense of space - this is a place where neighbours become friends and every day starts with a breath of fresh air.

3 BEDROOM HOMES

ASTLEY
3 BEDROOM HOME - PLOTS 16, 17, 18

4 BEDROOM HOMES

FAIRFIELD
4 BEDROOM HOME - PLOTS 37, 38, 39, 43, 44, 45, 46

TWYCROSS
4 BEDROOM HOME - PLOTS 32, 41

SIBSON
4 BEDROOM HOME - PLOTS 33, 34, 40, 47

LEAMINGTON
4 BEDROOM HOME - PLOTS 3, 4, 5, 11, 12, 30, 31, 42, 48

HAMPTON
4 BEDROOM HOME - PLOTS 1, 2, 35, 36



SHOW HOME
Leamington
Plot 48

A HOME TO SUIT YOU



ASTLEY

3 BEDROOM HOME | PLOTS 16, 17, 18

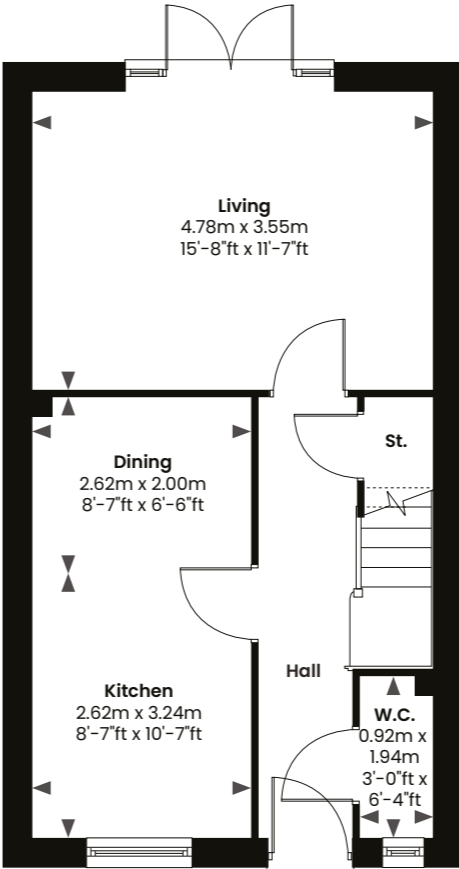


FEATURES THAT MAKE THIS HOME

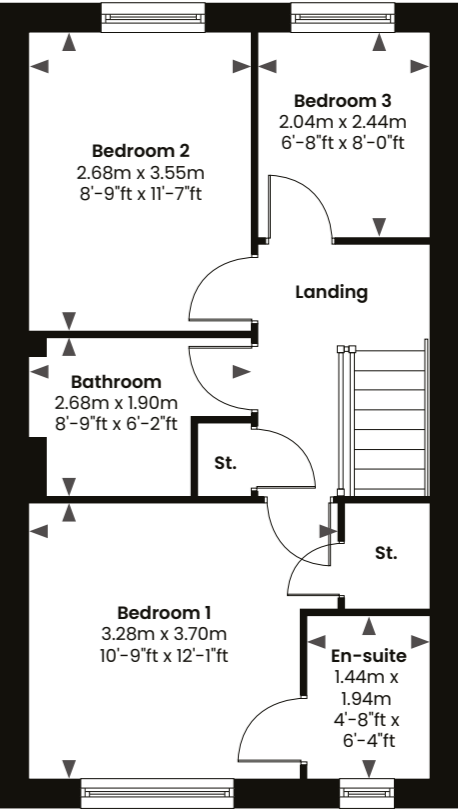
- ◆ Bright, South-facing kitchen with dining area
- ◆ Spacious living room with French doors onto rear garden
- ◆ Shower en suite to master bedroom
- ◆ North-East facing garden benefits from morning sun

- 🛏 3 BEDS
- 🛁 2 BATHS
- 🏠 910 SQ.FT.
- 🚗 2 SPACES

Ground Floor



First Floor



The Astley is a beautifully designed three-bedroom home, perfect for first-time buyers, offering modern living, garden access, and a private master en suite.

Your Home,
Your Way



Scan to find
out more

FAIRFIELD

4 BEDROOM HOME | PLOTS 37, 38, 39, 43, 44, 45, 46

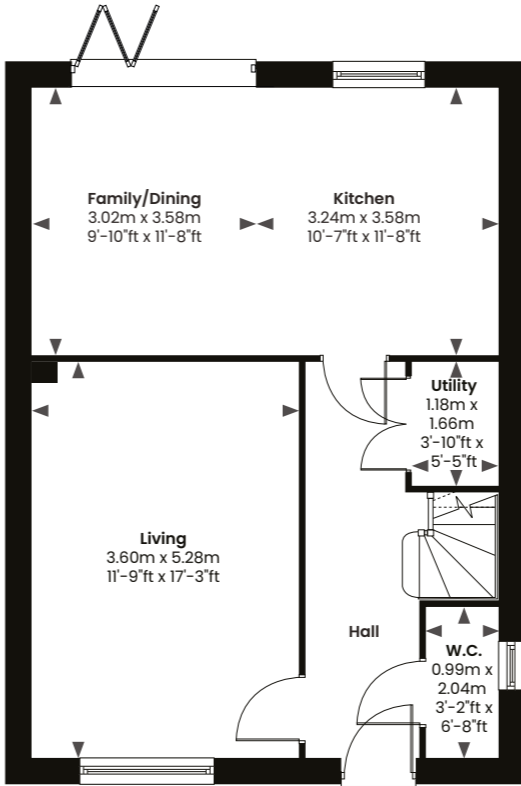


FEATURES THAT MAKE THIS HOME

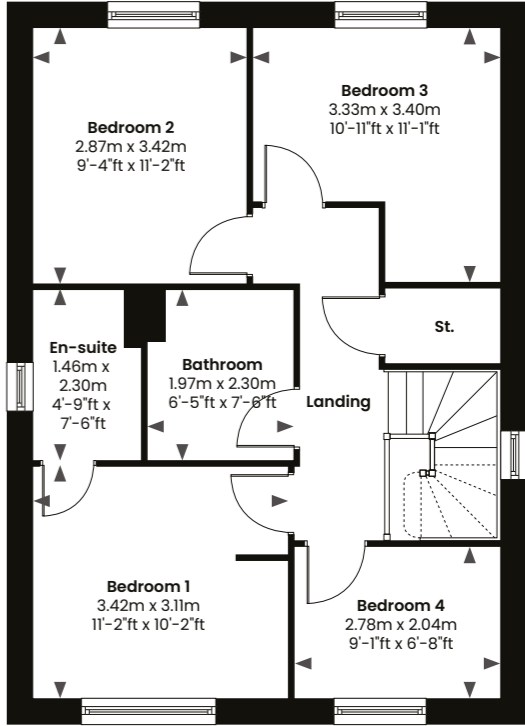
- Overlooking green open space
- Open-plan kitchen with family and dining area
- Separate utility room
- Three doubles and one single bedroom

- 4 BEDS
- 2 BATHS
- 1,120 SQ.FT.
- 2 SPACES + GARAGE

Ground Floor



First Floor



The Fairfield is a stylish four-bedroom home designed for modern family living, with open-plan spaces, garden access, and a generous master suite for added comfort.

Your Home,
Your Way



Scan to find
out more

TWYCROSS

4 BEDROOM HOME | PLOTS 32, 41

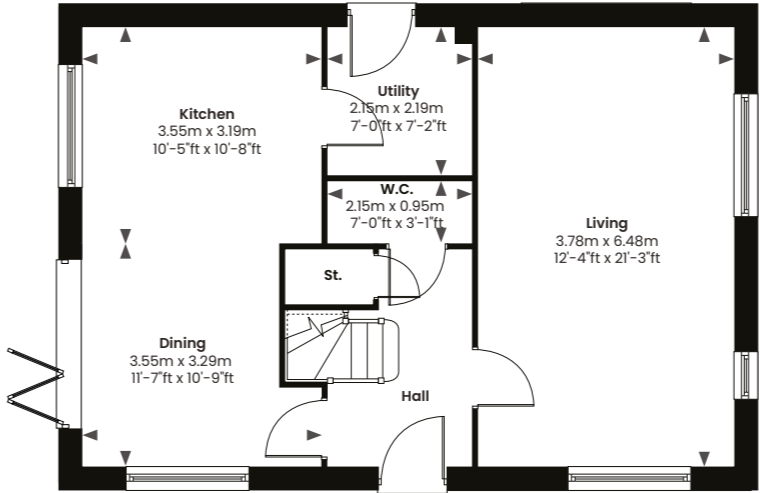


FEATURES THAT MAKE THIS HOME

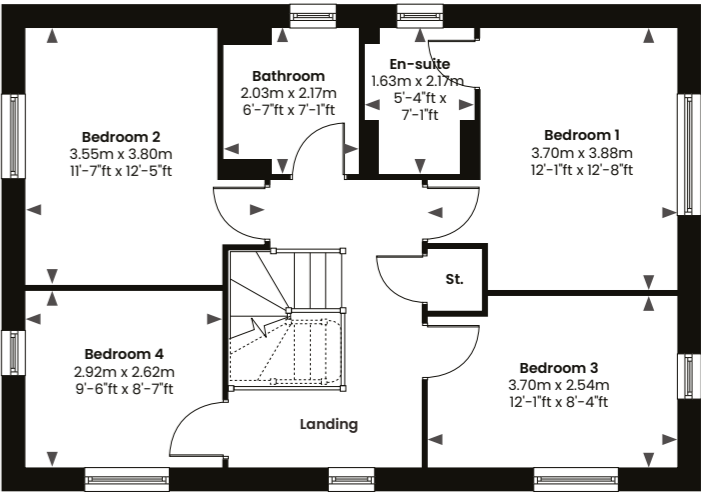
- Corner plot positions
- Large kitchen with bi-fold doors from the dining area
- Separate utility room
- Three doubles and one single bedroom

- 4 BEDS
- 2 BATHS
- 1,345 SQ.FT.
- 2 SPACES + GARAGE

Ground Floor



First Floor



The Twycross is a distinctive four-bedroom detached home, featuring a stunning kitchen-diner with bi-fold doors to the garden, a bright lounge, luxurious master suite, and a private garage – perfect for modern family living.

Your Home,
Your Way



Scan to find
out more

SIBSON

4 BEDROOM HOME | PLOTS 33, 34, 40, 47

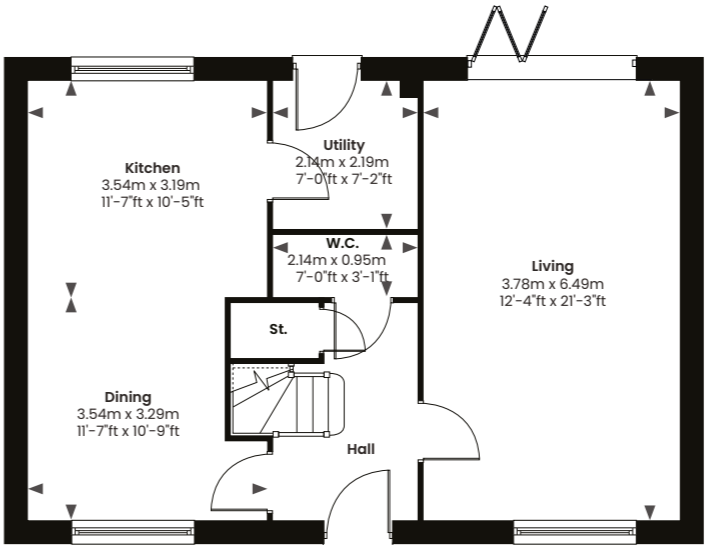


FEATURES THAT MAKE THIS HOME

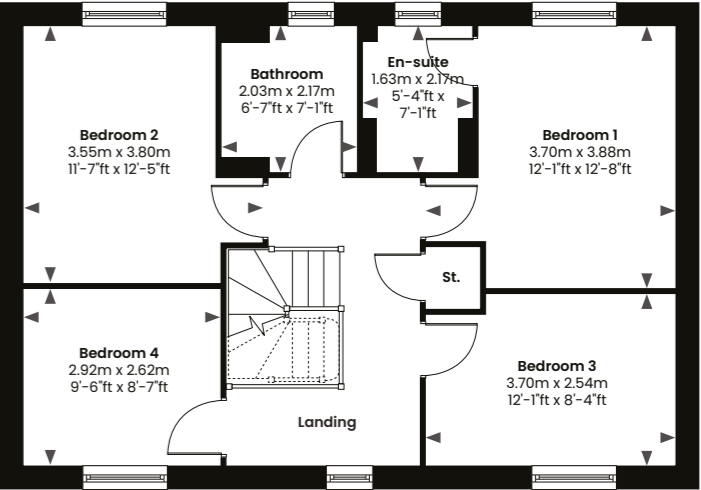
- Open-plan kitchen with integrated appliances
- Separate utility room with rear door access
- Living room with bi-fold doors onto rear garden
- Three doubles and one single bedroom

-  **4 BEDS**
-  **2 BATHS**
-  **1,345 SQ.FT.**
-  **2 SPACES + GARAGE**

Ground Floor



First Floor



The Sibson is a beautifully designed four-bedroom detached home, offering an open-plan kitchen, separate utility, a bright lounge with bi-fold doors to the garden, and generous bedrooms – complete with a garage and two parking spaces.

Your Home,
Your Way



Scan to find
out more

LEAMINGTON

4 BEDROOM HOME | PLOTS 3, 4, 5, 11, 12, 30, 31, 42, 48

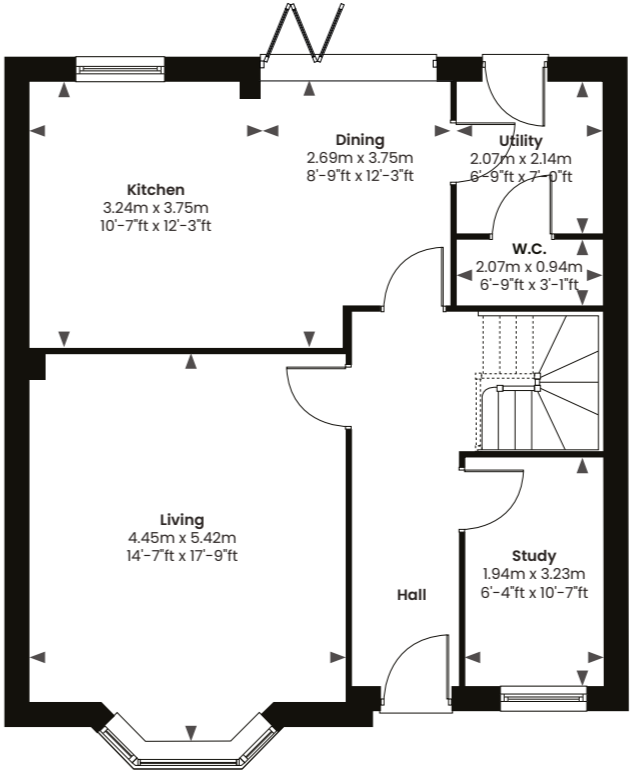


FEATURES THAT MAKE THIS HOME

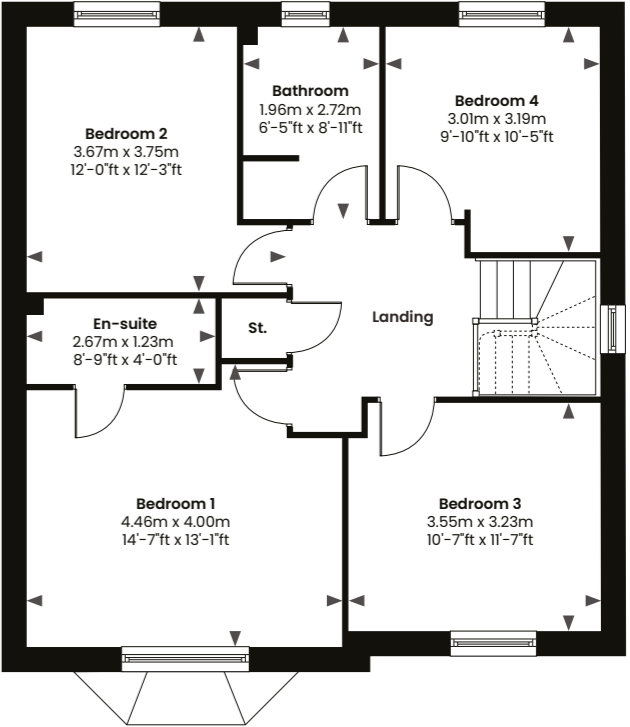
- Two reception rooms with a large feature bay window
- Utility off the kitchen plus downstairs WC
- Three doubles and one single bedroom
- Bi-fold doors from kitchen/dining to rear garden

-  **4 BEDS**
-  **2 BATHS**
-  **1,509 SQ.FT.**
-  **2 SPACES + GARAGE**

Ground Floor



First Floor



The Leamington is a spacious and stylish four-bedroom detached home, perfect for modern family living, with open-plan spaces, bi-fold doors opening onto the garden, a luxurious master suite, and a private garage.

Your Home,
Your Way



Scan to find
out more

SHOW HOME
Plot 48

HAMPTON

4 BEDROOM HOME | PLOTS 1, 2, 35, 36

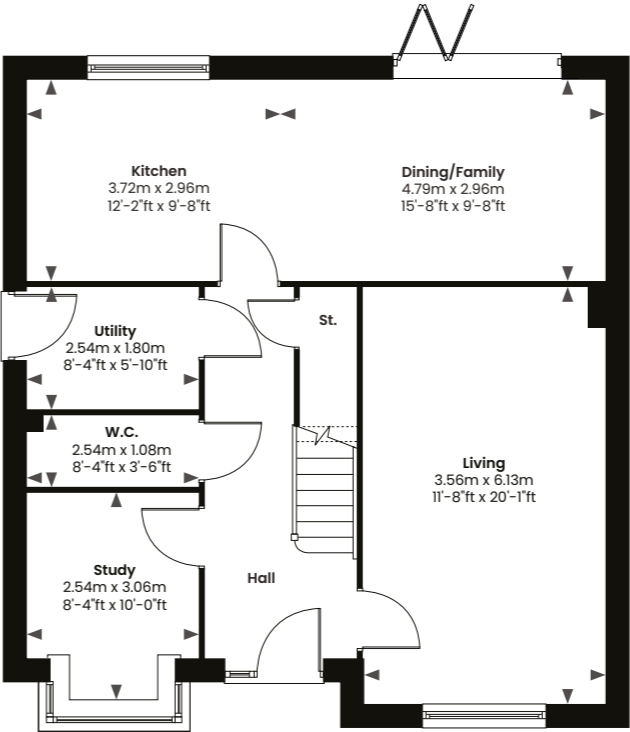


FEATURES THAT MAKE THIS HOME

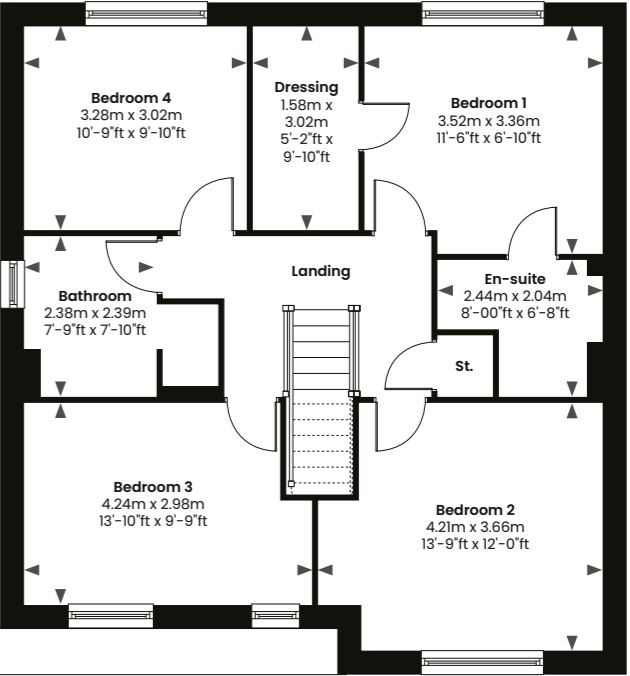
- Family dining with bi-fold doors
- Separate utility room with side door access
- Four double bedrooms
- Large garden on all plots
- Dressing room

- 4 BEDS
- 2 BATHS
- 1,631 SQ.FT.
- 2 SPACES + GARAGE

Ground Floor



First Floor



The Hampton is a spacious four-bedroom detached home featuring two reception rooms including a bay window, a separate utility, two bathrooms, ample parking with a garage, and a large garden.

Your Home,
Your Way



Scan to find
out more



HANDCRAFTED WITH CARE, BUILT FOR LIFE

At Owl Homes, we are committed to delivering exceptional quality. Our homes are handcrafted with specially chosen materials that offer style and durability.

From selecting only trusted suppliers to investing in high-spec finishes, we ensure every detail is built to impress and more importantly, to last.



KITCHEN AND UTILITIES

- French / Bi-fold doors onto rear garden *
- Symphony kitchen with square edge worktops
- Bosch integrated single / double oven*
- Bosch induction hob
- Integrated NEFF canopy extraction hood
- Bosch integrated dishwasher**
- Bosch low-frost integrated fridge freezer
- Ideal boiler

BEDROOMS

- Built-in wardrobes to master suite**
- USB sockets to master suite and kitchen
- Slimline TV point to the master suite

BATHROOMS, EN SUITES AND CLOAKROOMS

- Vent Axia mechanical extract ventilation
- Roca sanitaryware
- Triton Amore electric shower (over baths) *
- Bristan Vertico thermostatic shower (to shower enclosures) *
- Bristan basin and bath taps
- Heated towel radiator to bathroom and master en suite
- Porcelanosa wall tiling
- Shaver socket to family bathroom and master en suite

EXTERNAL DETAILS

- External up/down lights to the front
- EV chargers
- Solar (PV) panels

SECURITY & PEACE OF MIND

- Carbon monoxide alarm with battery back up
- Smoke detector with battery back up
- Heat detector alarm with battery back up
- 10 year NHBC warranty

* Option dependent on house type and size.
Check plot particulars for details.

** Option applicable to 4 and 5-bed homes

THE BENEFIT OF BUYING NEW

Buying a new-build home is an exciting experience like no other. You'll benefit from brand-new appliances, the distinctive freshness of newly painted rooms, enhanced energy efficiency and the peace of mind that comes with a home built to modern standards. Best of all, you have the opportunity to personalise your home from the day you reserve.

YOUR HOME, YOUR WAY

- ✦ Be part of the build journey with exclusive 'Behind the Build' visits and see your home come to life around you
- ✦ Get expert interior design advice to help you achieve your dream decor
- ✦ Add a splash of colour to your home with professional painting and decorative finishes from premium Farrow & Ball or Dulux palettes
- ✦ Upgrade your en suite and bathrooms with luxurious fittings for extra comfort and style
- ✦ Tailor your home further with blinds, flooring, smart heating and more when you reserve your home early.



THE DIFFERENCE IS IN THE DETAIL

At Owl Homes, every home begins with a promise – to build with integrity, imagination and heart.

Founded in 2015, we're a privately-owned, forward-thinking housebuilder with deep roots in the Midlands. Our homes are more than just bricks and mortar - they're the result of thoughtful design, expert craftsmanship and a genuine passion for building quality, sustainable homes that we would be proud to live in ourselves.

From the first drawing to the last set of keys handed over, care is at the centre of everything we do because we're not just building houses - we're creating a place where life's most meaningful moments will unfold. A place that will become someone's sanctuary at the end of a long day.

With Owl, you'll find homes that not only look and feel right but stand the test of time - spaces made to be lived in, loved and proudly called home – because the difference is in the detail.

SELL YOUR HOME QUICK AND **HASSLE FREE**

PART EXCHANGE

Selling your home through an estate agent and the possibility of joining a chain can be a stressful and time-consuming process. Our Part Exchange scheme removes the uncertainties of the buying and selling process and offers you the freedom to buy your new Owl home quickly, smoothly and chain-free. If you're looking for a guaranteed buyer, a fair price and no hassle – this could be the solution to selling your home.

SMOOTH MOVE

With our Smooth Move scheme, we'll sell your home for you and even pay your estate agent fees. Designed to take the hassle out of selling, you can secure your new Owl home whilst we sell yours for you. We arrange for two independent valuations with local agents and agree a selling price with you. We'll then manage the sale of your property from advertising through to completion and keep you informed every step of the way. It's as simple as that!

A WORD FROM **OUR CUSTOMERS**

"You have such a great site team! I honestly cannot praise them enough, anything I've asked of them they have made sure it has been sorted. We adore our home and the fabulous little community growing on site. You should be very proud."

The Leachman family

"The house is beautiful and we could not be happier with the finished product. You have a wonderful team from management to sales at owl homes, I would highly recommend them."

The Peers / Macrae family



FAIRNESS AND TRANSPARENCY

THE CONSUMER CODE

As a member of the NHBC (National House Builders Council), we are proud to adhere to the Consumer Code for New Home Builders which ensures we treat customers fairly throughout the buying process.

SEEKING INDEPENDENT ADVICE

We do not receive any commission or financial reward for recommending from our panel of independent financial advisors or solicitors. We are proud to work with highly-qualified third parties and make sure we only recommend credible organisations. You are welcome to seek your own advice, IFA's and solicitors to support your purchase.

COMPUTER GENERATED IMAGERY AND HOME INFORMATION

Information and imagery shown within this brochure is for guidance only. Any particulars relating to homes available at this development should not be relied upon to accurately describe any aspect of the property.

Although every care has been taken to ensure that information is correct as time of publish, floor layout, dimensions, imagery and specification details are indicative only and may have been updated since publish. Computer generated imagery and photography is intended for illustrative guidance only. Contents of this brochure do not constitute any part of a contract or warranty. Please check site plan for plot handings and speak to us to review full working drawings before your purchase is complete.

We're committed to keeping our customers happy and delivering excellence, but if you need to raise a concern, please visit www.owlhomes.co.uk/contact/complaints-policy or ask us for a copy of our policy.



WILLOWBANK MEADOWS

Alderton

CONTACT US

Start your journey to a new home at Willowbank Meadows today. Our friendly sales team is here to help you find the perfect home for your next chapter.

Visit www.owlhomes.co.uk/willowbank for more information.

Willowbank Meadows
Willow Bank Road
Alderton,
GL20 8NJ

What 3 Words [///romance.stowing.former](https://www.what3words.com/romance.stowing.former)