



URBAN ESTATES

SALES - LETTINGS - MANAGEMENT



96 The Edge Clowes Street
Salford, M3 5ND

Offers invited £560,000



96 The Edge Clowes Street

, Salford, M3 5ND

Stylish 2-Bed, 2.5-Bath Duplex Apartment with Rooftop Terrace – The Edge, Salford with Riverside Views

A stunning 2-bedroom duplex apartment for sale in Salford, located on the 13th and 14th floors of The Edge. This corner apartment is perfectly positioned to offer breathtaking riverside views of the River Irwell, as well as excellent vistas of Manchester Cathedral, Manchester Town Hall clock, and the iconic Manchester Wheel. Ideal for buyers seeking modern city living with spectacular scenery.

The apartment features a bright, open-plan living area with floor-to-ceiling windows and a sleek, modern kitchen with integrated appliances, while a private rooftop terrace provides the perfect space for relaxing or entertaining while enjoying panoramic city and river views.

Key Features:

Two double bedrooms, including a principal ensuite and fitted wardrobes

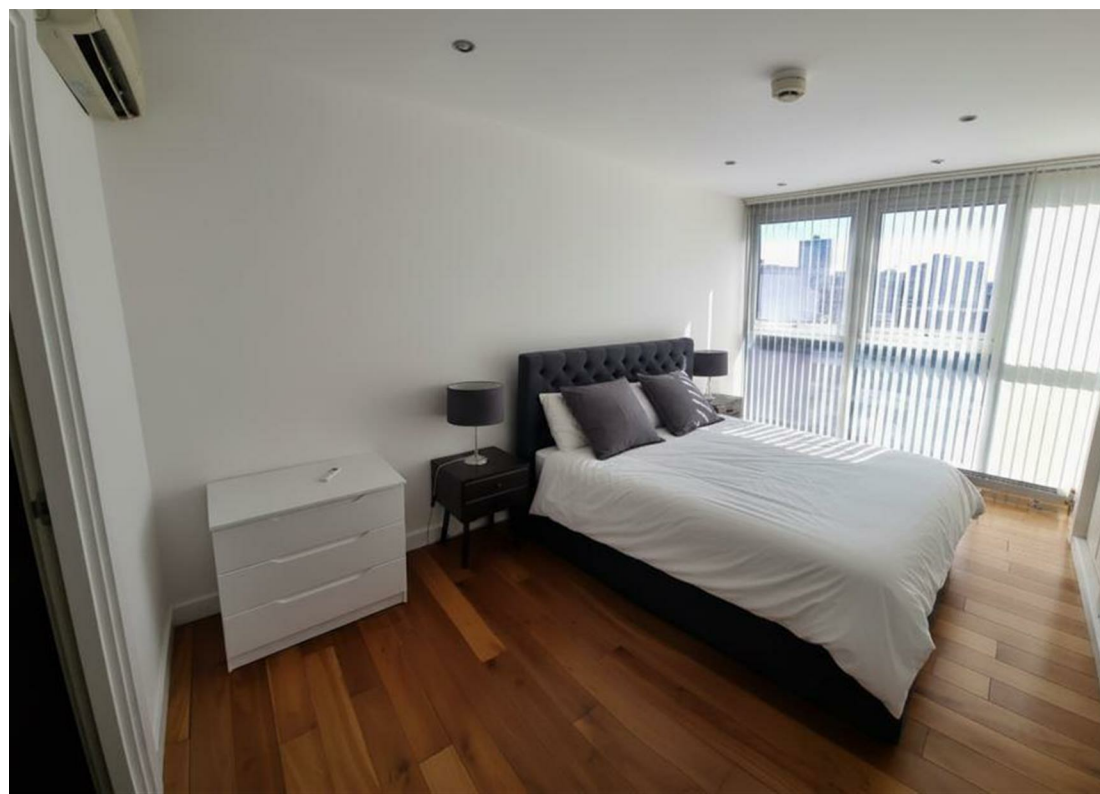
Guest cloakroom on the lower level

Private rooftop terrace with panoramic views of the River Irwell and Manchester skyline

Open-plan living space with floor-to-ceiling windows for natural light

Modern kitchen with integrated appliances





Secure underground parking

24-hour concierge service

Pet-friendly development

Walking distance to Manchester city centre and Spinningfields

Mortgage buyers welcome

EWS1 certificate available

Service Charges (01/04/25 - 30/06/25): £1,495.59

Ground Rent: £125 paid every six months

This luxury Salford riverside duplex apartment offers premium city living, exceptional views, secure parking, and top-tier amenities. Perfect for professionals, investors, or city-centre buyers, this property represents a rare opportunity to combine modern design with some of Manchester's most iconic views.

Floor Plan



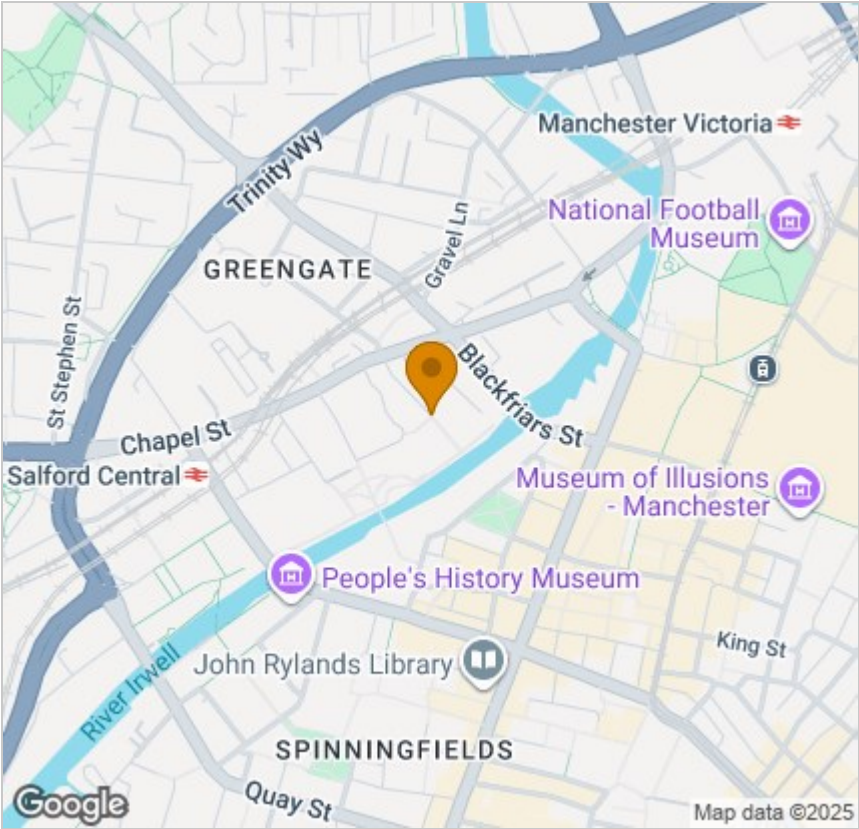
Viewing

Please contact our Urban Estates Office on 0333 433 0348 if you wish to arrange a viewing appointment for this property or require further information.

These particulars, whilst believed to be accurate are set out as a general outline only for guidance and do not constitute any part of an offer or contract. Intending purchasers should not rely on them as statements of representation of fact, but must satisfy themselves by inspection or otherwise as to their accuracy. No person in this firms employment has the authority to make or give any representation or warranty in respect of the property.

125 Deansgate, Lancs, M3 2BY
Tel: 0333 433 0348 Email: talat.ali@urbanestatesuk.co.uk <https://www.urbanestatesuk.co.uk/>

Area Map



Energy Efficiency Graph

