



URBAN ESTATES
SALES - LETTINGS - MANAGEMENT



255A Bury New Road
Prestwich, Manchester, M25 9PB

£995 Per month



255A Bury New Road

Prestwich, Manchester, M25 9PB

Urban Estates are delighted to offer this spacious and well-presented two-bedroom apartment, perfectly located on Bury New Road in the vibrant heart of Prestwich.

Set above a commercial unit, this bright and airy apartment combines modern living with unbeatable convenience. Just steps from your door, you'll find an exciting mix of independent cafés, trendy restaurants, shops, and everyday essentials—all in the lively surroundings of Prestwich Village.

Inside, the apartment offers generous space throughout. A welcoming entrance hallway leads to a large landing, creating a sense of openness. The bright lounge is flooded with natural light—ideal for relaxing or entertaining. The kitchen comes equipped with ample cupboard space, a fridge freezer, and a washing machine, making it move-in ready.

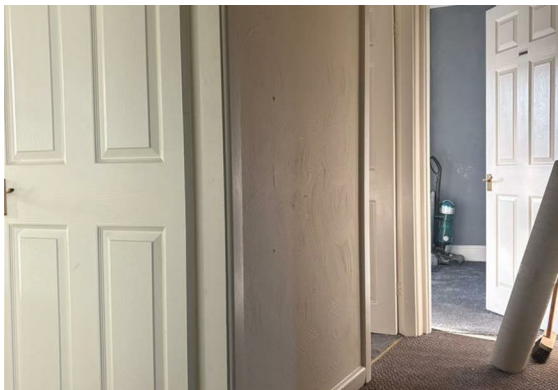
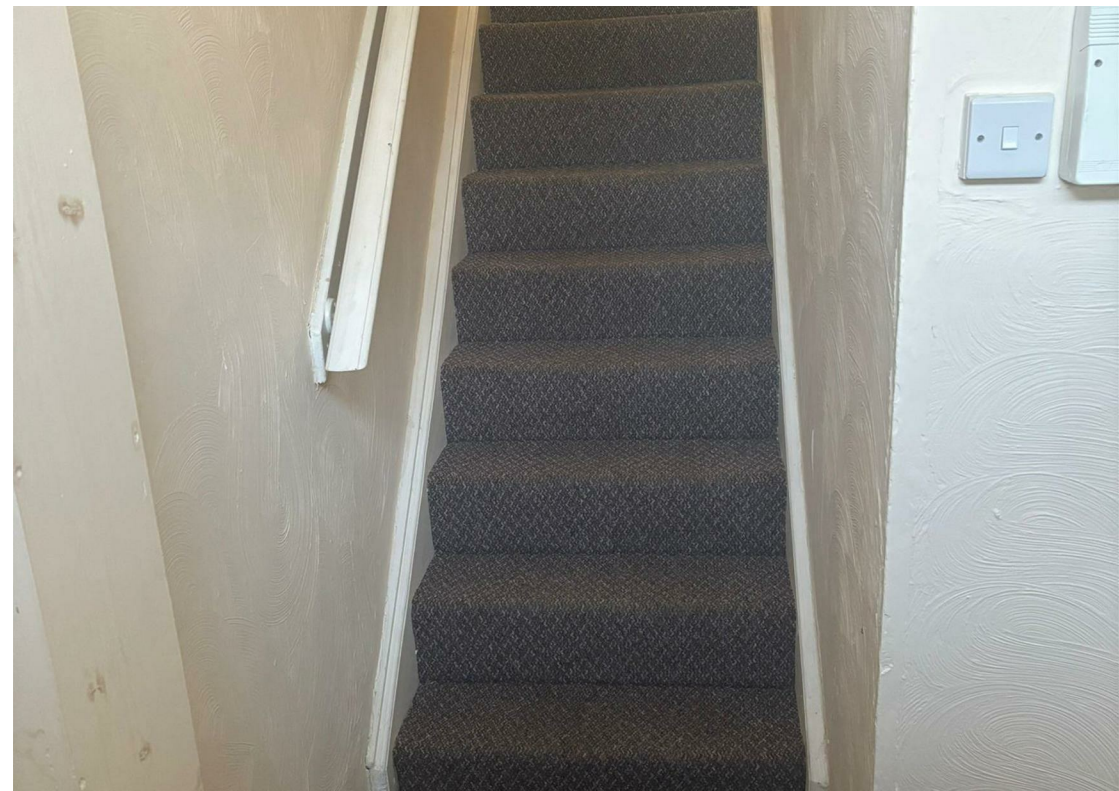
Both bedrooms are well-sized, offering comfortable and versatile living, whether you're working from home or sharing. The modern three-piece bathroom suite completes the space.

Additional features include:

Unfurnished, with essential appliances included

Spacious layout with excellent natural light

Fantastic location for commuters and creatives alike





Situated within walking distance of Prestwich Metrolink Station, you'll enjoy fast, direct access to Manchester city centre. If you love the outdoors, Heaton Park—one of the UK's largest urban parks—is right around the corner, perfect for weekend strolls, picnics, and events.



Available now, this is an ideal home for professionals or couples looking for a stylish, well-connected base in one of Greater Manchester's most sought-after neighbourhoods.

Early viewings are highly recommended—don't miss out!



Floor Plan



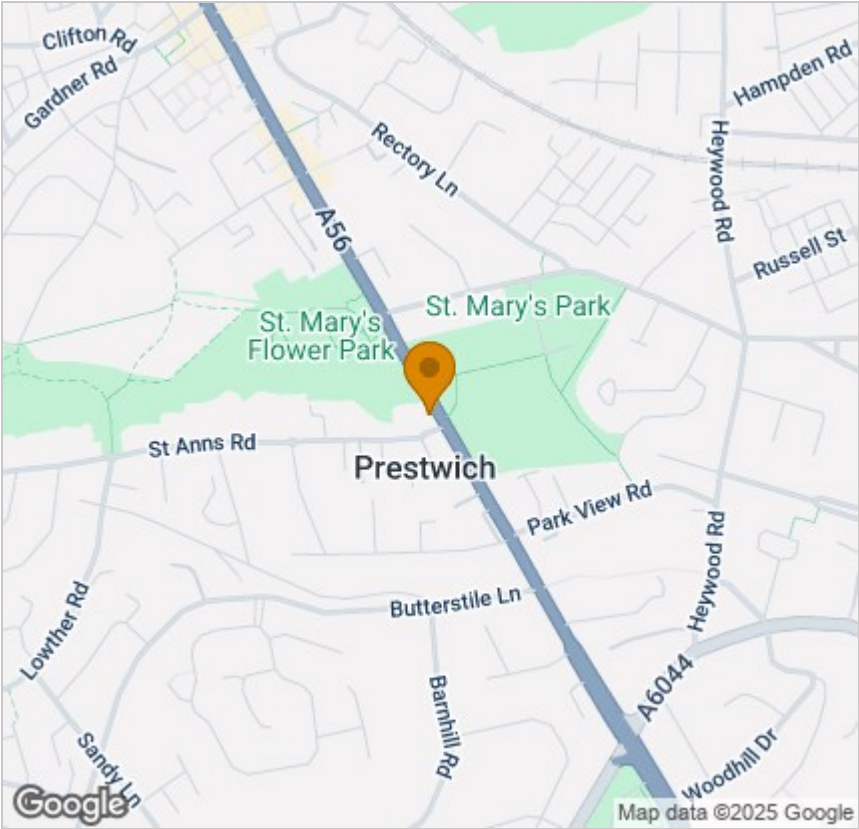
Viewing

Please contact our Urban Estates Office on 0333 433 0348 if you wish to arrange a viewing appointment for this property or require further information.

These particulars, whilst believed to be accurate are set out as a general outline only for guidance and do not constitute any part of an offer or contract. Intending purchasers should not rely on them as statements of representation of fact, but must satisfy themselves by inspection or otherwise as to their accuracy. No person in this firms employment has the authority to make or give any representation or warranty in respect of the property.

125 Deansgate, Lancs, M3 2BY
Tel: 0333 433 0348 Email: talat.ali@urbanestatesuk.co.uk <https://www.urbanestatesuk.co.uk/>

Area Map



Energy Efficiency Graph

