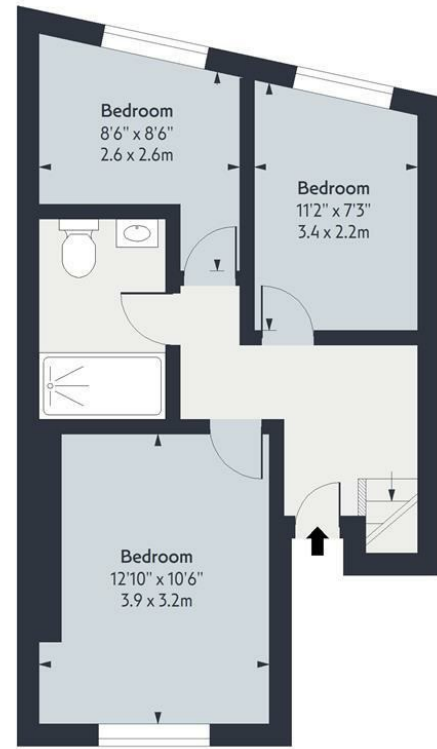


Church Street

Approx. Gross Internal Area 755 Sq Ft - 70.14 Sq M
Approx. Gross Balcony Area 45 Sq Ft - 4.18 Sq M

OAKWOOD



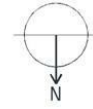
Second Floor

Floor Area 402 Sq Ft - 37.35 Sq M



Third Floor

Floor Area 353 Sq Ft - 32.79 Sq M

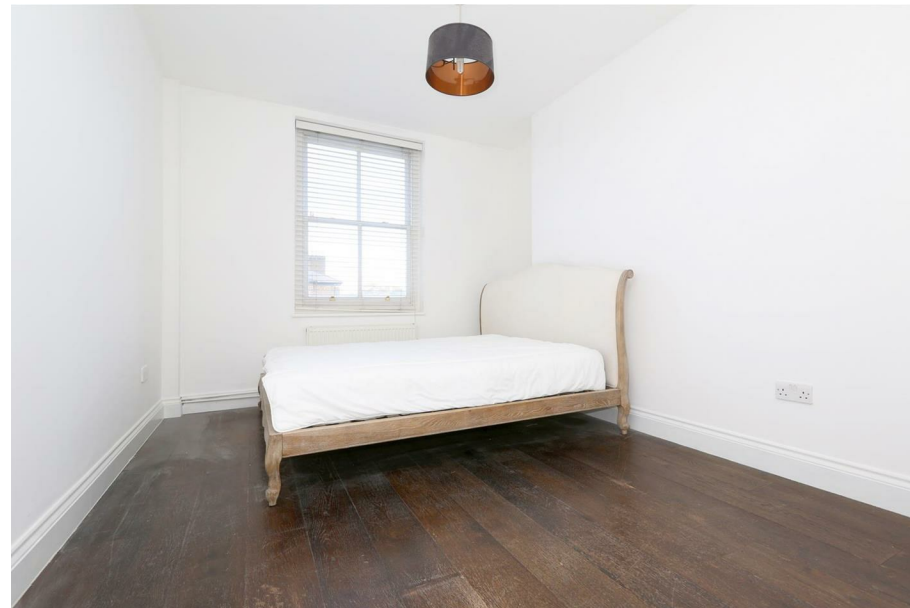


Measured according to RICS IPMS2. Floor plan is for illustrative purposes only and is not to scale. Every attempt has been made to ensure the accuracy of the floor plan shown, however all measurements, fixtures, fittings and data shown are an approximate interpretation for illustrative purposes only. 1 sq m = 10.76sq feet.

lpplus.com

Date: 11/12/2025

Whilst every attempt has been made to ensure the accuracy of the floor plan contained here, measurements of doors, windows, rooms and any other items are approximate and no responsibility is taken for any error, omission or mis-statement. This plan is for illustrative purposes only and should be used as such by any prospective purchaser. The services, systems and appliances shown have not been tested and no guarantee as to their operability or efficiency can be given.



£3,000 Per Month

A stunning three bedroom split level flat arranged over the second and third floors of this period building. Internally the flat is presented in excellent condition and features a modern kitchen/bathroom, three bedrooms and huge open plan living area aswell as a balcony

The flat is located on Church Street with an array of bars, shops and restaurants on offer and transport links including the 73 bus and Stoke Newington Overground station are only a short walk away.



- THREE BEDROOMS
- BALCONY

- SPLIT LEVEL

