



## Waterloo Road Southport, PR8 3AY

\*\*\*\* AVAILABLE FOR THE ROYAL BIRKDALE OPEN 2026 \*\*\*\*

\*\*\*\*PRICE ON APPLICATION\*\*\*\*

Flexi-Agent are proud to present this spectacular, beautifully presented, and spacious five double bedroom detached property, available for the Golf Open 2026. The home spans over 4265 sq ft and is ideally situated a short distance from the vibrant Birkdale Village, which offers a range of shops, cafés, bars, and excellent transport links.

You are also within walking distance of the stunning Birkdale Dunes, which back onto the world-famous Royal Birkdale Championship Golf Course.

The property briefly comprises: Entrance hallway, two spacious reception rooms, a large conservatory set up as a gym. A modern open plan kitchen/diner, cloakroom, utility room and downstairs WC.

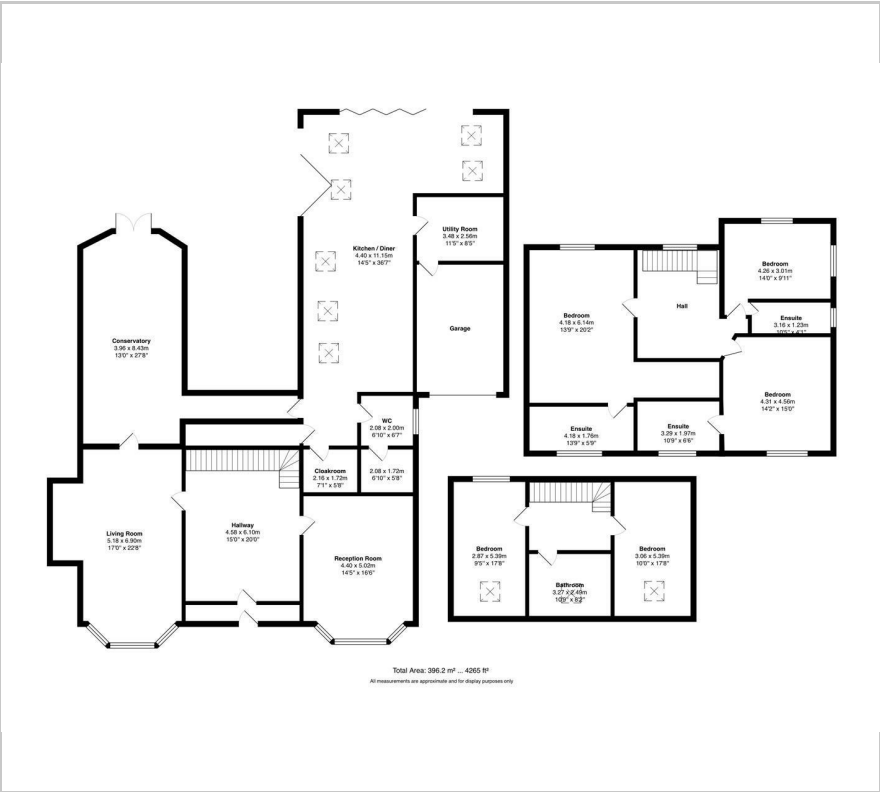
To the first floor three doubled bedrooms all with their own Ensuite bathroom. The second floor consists of a further two double bedrooms and a family bathroom.

Externally the property benefits from ample driveway parking and a sun catching rear garden.





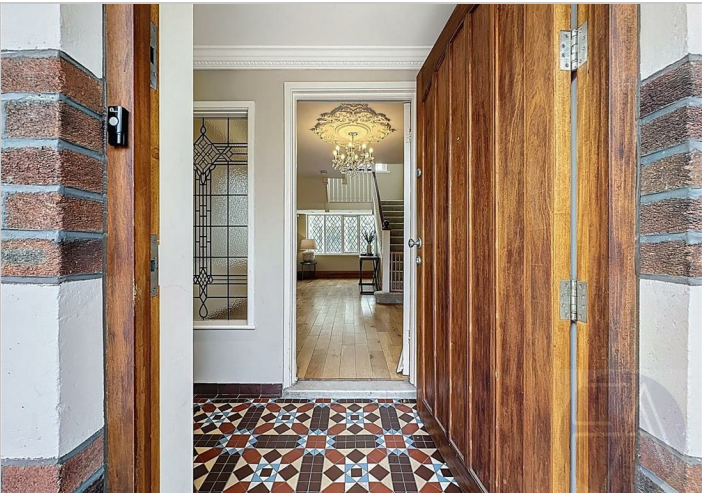
Floor Plan



Area Map



Energy Efficiency Graph



These particulars, whilst believed to be accurate are set out as a general outline only for guidance and do not constitute any part of an offer or contract. Intending purchasers should not rely on them as statements of representation of fact, but must satisfy themselves by inspection or otherwise as to their accuracy. No person in this firms employment has the authority to make or give any representation or warranty in respect of the property.